



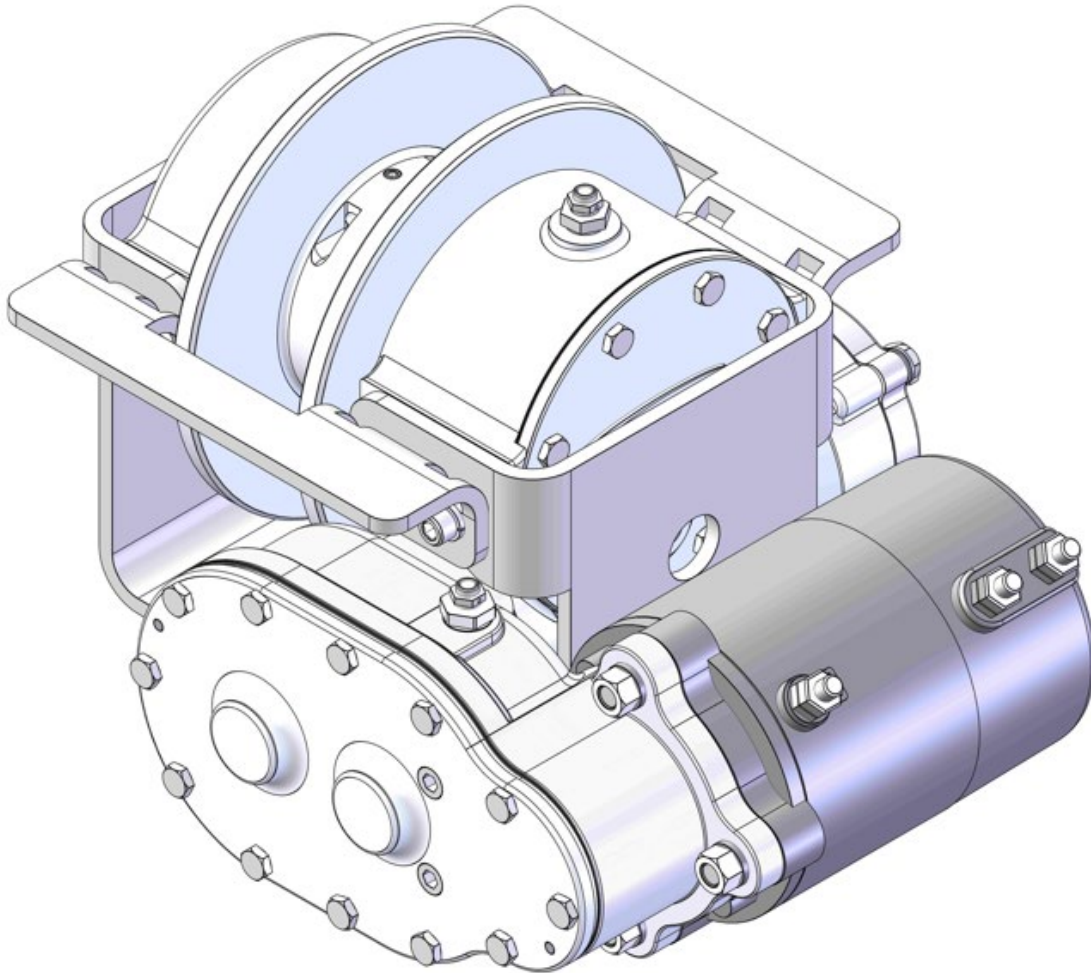
---

## Owners Manual

# DCG8R

English

914322-0226-C



**READ AND UNDERSTAND THIS MANUAL BEFORE INSTALLATION AND OPERATION OF WINCH. SEE WARNINGS.**

---

Mailing Address:  
P.O. Box 58151  
Tulsa, OK 74158

Phone: (918) 438-2760  
Fax: (918) 438-6688  
[www.ramseyindustries.com](http://www.ramseyindustries.com)

# TABLE OF CONTENTS

SECTION	PAGE
1 Introduction .....	2
2 Specification .....	2
3 Techniques of operation .....	3
4 Warnings .....	3
5 Hoist Maintenance .....	4
6 Hoist Mounting .....	5
7 Electrical Connections .....	5
8 Cable Installations .....	5
9 Troubleshooting Guide .....	6
10 Dimensional Drawing .....	7
11 Warranty .....	8

# RAMSEY ELECTRICAL HOIST MODEL DCG8R SERIES

## PLEASE READ THIS MANUAL CAREFULLY

This manual contains important information for the operation of your Ramsey Winch, and safety procedures one needs to know before operating a Ramsey Winch.

### SPECIFICATIONS:

WINCH DRUM WIDTH:	(in.)	.....					2.03
RATED LINE PULL	(lbs.)	.....					3,102
	(kg.)	.....					1,407
GEAR REDUCTION		.....					298 : 1
WEIGHT (WITHOUT CABLE)	(lbs.)	.....					70
	(kg.)	.....					32
LAYER OF CABLE		1	2	3	4	5	6
RATED LINE PULL	(lbs.)	3,102	2,794	2,542	2,331	2,153	2,000
PER LAYER	(kg.)	1,407	1,267	1,153	1,057	976	907
CABLE CAPACITY	ft.	9	18	29	40	53	66
	m.	3	6	9	12	16	20
LOAD (First Layer)		No Load	776	1551	2327	3102	
LINE SPEED (First Layer)	(ft/min.)	20	14	11	9	8	
	(m/min.)	6.0	4.2	3.3	2.8	2.5	
AMPS	(13.5V)	65	115	160	196	230	
Specification Conditions:							
Wire Rope Diameter:	7/32 in.						
1st Layer Rope Pitch Dia. / Rope Dia.:	18.14						
This winch meets ANSI B30.5 with a Maximum Top Layer Rated Capacity of 2,000 lbs. with Maximum 66 ft of 7/32 in diameter cable.							

WINCH DRUM WIDTH:	(in.)	.....					2.03
RATED LINE PULL	(lbs.)	.....					3,102
	(kg.)	.....					1,407
GEAR REDUCTION		.....					298 : 1
WEIGHT (WITHOUT CABLE)	(lbs.)	.....					70
	(kg.)	.....					32
LAYER OF CABLE		1	2	3	4	5	
RATED LINE PULL	(lbs.)	3,102	2,757	2,482	2,256	2,068	
PER LAYER	(kg.)	1,407	1,251	1,126	1,023	938	
CABLE CAPACITY	ft.	8	16	26	36	48	
	m.	2	5	8	11	15	
LOAD (First Layer)		No Load	776	1551	2327	3102	
LINE SPEED (First Layer)	(ft/min.)	20	14	11	9	8	
	(m/min.)	6.0	4.2	3.3	2.8	2.5	
AMPS	(13.5V)	65	115	160	196	230	
Specification Conditions:							
Wire Rope Diameter:	1/4 in.						
1st Layer Rope Pitch Dia. / Rope Dia.:	16.00						

**NOTE:** The rated line pulls shown are for the hoist only. Consult the wire rope manufacturer for wire rope ratings.

## TECHNIQUES OF OPERATION

Check oil level of hoist every six months. Replace oil annually or more often if winch is used frequently. Use 3/4 pint of all purpose E. P. 140 oil in the worm gear housing and 1/2 pint SAE 20 for spur gear box. If the oil is contaminated with metallic particles, inspect hoist for cause of abnormal wear. Periodically check all electrical connections and mounting bolts. Tighten hardware if necessary.

The minimum ampere-hour rating of vehicle battery should be 70, and used with at least a 40 amp alternator. An Auxiliary battery is recommended to supply additional battery power.

Inspect the cable frequently. If the cable becomes frayed with broken strands, replace immediately. Cable and hook assembly may be purchased from a Ramsey distributor.



### **WARNINGS:**

**STAY OUT FROM UNDER AND AWAY FROM RAISED LOADS.**

**STAND CLEAR OF CABLE WHILE PULLING. DO NOT TRY TO GUIDE CABLE. DO NOT EXCEED MAXIMUM LINE PULL RATINGS SHOWN IN TABLE.**

**DO NOT USE HOIST TO LIFT, SUPPORT, OR OTHERWISE TRANSPORT PERSONNEL.**

**A MINIMUM OF 5 WRAPS OF CABLE AROUND THE DRUM BARREL IS NECESSARY TO HOLD THE LOAD. CABLE CLAMP IS NOT DESIGNED TO HOLD LOAD.**

# HOIST MAINTENANCE

Adhering to the following maintenance schedule will keep your hoist in top condition and performing as it should with a minimum of repair.

## **A. WEEKLY**

1. Check the oil level and maintain it to the oil level plug. If oil is leaking out, determine location and repair.
2. Check the pressure relief plug in top of the gear housing. Be sure that it is in good operating condition so that hot oil gasses may escape.
3. Lubricate cable with light oil.

## **B. MONTHLY**

1. Check the hoist mounting bolts. If any are missing, replace them and securely tighten any that are loose. Make sure to use only grade 5 bolts or better.
2. Check the torque setting of the oil cooled worm brake. Make any adjustments required, following the procedure described in ADJUSTING THE OIL COOLED WORM BRAKE in the Owner's Manual.
3. Inspect the cable. If the cable has become frayed with broken strands, replace immediately.

## **C. ANNUALLY**

1. Drain the oil from the hoist annually or more often if hoist is used frequently.
2. Fill the hoist to the oil level plug with clean kerosene. Run the hoist a few minutes with no load in the reel in direction. Drain the kerosene from the hoist.
3. Refill the hoist to the oil level plug with all purpose E.P. 140 gear oil.
4. Inspect frame and surrounding structure for cracks or deformation.
5. Gear wear can be estimated by rocking the drum back and forth and if necessary drain oil and remove cover for closer inspection.

## **D. ADJUSTING THE OIL COOLED WORM BRAKE**

The oil-cooled, fully adjustable, automatic brake operates in the worm housing lubricant, all parts being submerged in oil. When the brake wears to the point that the load begins to drift, the brake can be adjusted as follows:

1. Loosen the lock nut on the adjusting screw.
2. Tighten the brake by turning the adjusting screw clockwise. CAUTION: Only  $\frac{1}{4}$  turn is usually required to adjust the brake. Over-tightening can cause overheating, and damage to the brake parts. Tighten the lock nut after adjustment is completed.

If the brake does not respond to adjustment then a new leaf spring and brake disc is needed.

# HOIST MOUNTING

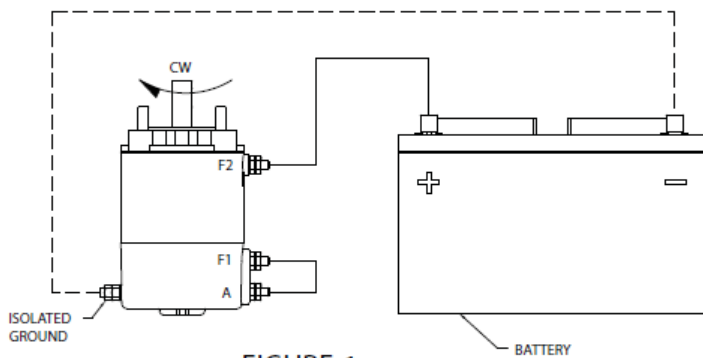
## **HOIST MOUNTING**

It is most important that this hoist be mounted securely so that the three major sections (the clutch housing end, the cable drum and the gear housing end) are aligned within .015in. The structure that the hoist is mounted to must be sufficiently sized to hold the rated load of the hoist.

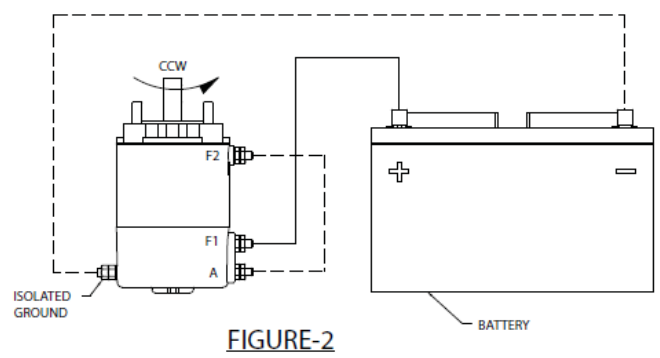
Use grade 5 or better hardware to mount the hoist to the structure.

## **ELECTRICAL CONNECTIONS**

See dimensional drawings on pages 7. Use power cable with appropriate end terminals. Hold inner nut on stud with a wrench while tightening outer nut. For distances up to 15 feet from battery to hoist, use #2 Ga. wire for the above connections. For distances greater than 15 feet, use wire larger than #2 Ga.



**FIGURE-1**  
MOTOR-CLOCKWISE ROTATION



**FIGURE-2**  
MOTOR-COUNTER CLOCKWISE ROTATION

## **CABLE INSTALLATION**

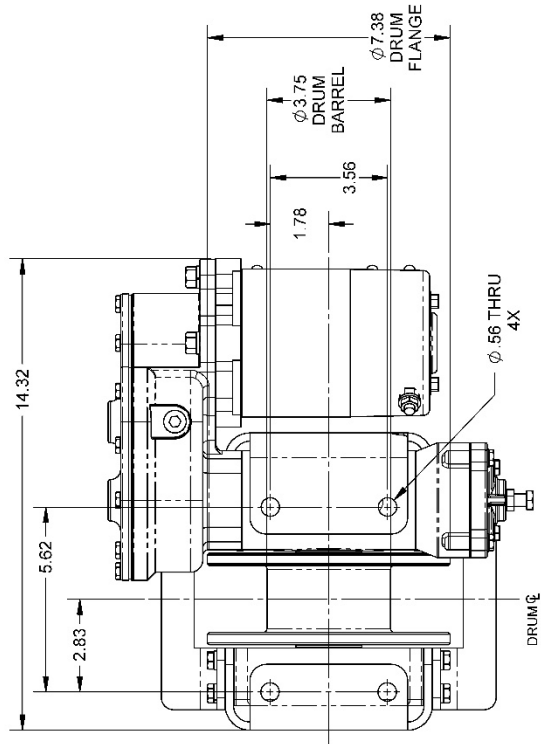
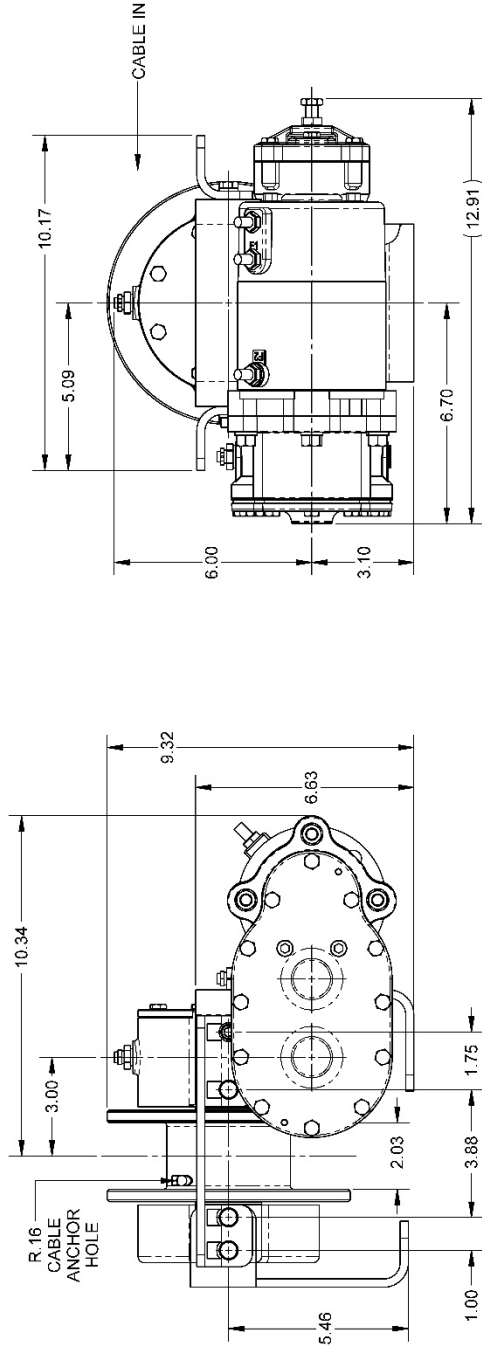
1. Unwind cable by rolling it out along the ground to prevent kinking. Securely wrap end of cable, opposite hook, with plastic or similar tape to prevent fraying.
2. Insert the end of cable, opposite hook end, into the hole in drum barrel. Secure cable to drum barrel, using setscrew furnished with winch. **TIGHTEN SETSCREW SECURELY.**
3. Carefully run hoist in the “reel-in” direction. Keeping tension on end of cable, spool all the cable onto the cable drum, taking care to form neatly wrapped layers.

# TROUBLE SHOOTING GUIDE

CONDITION	POSSIBLE CAUSE	CORRECTION
OIL LEAKS FROM HOUSING.	<ol style="list-style-type: none"> <li>1. Seal damaged or worn.</li> <li>2. Too much oil.</li> <li>3. Damaged gasket.</li> </ol>	<ol style="list-style-type: none"> <li>1. Replace seal.</li> <li>2. Drain excess oil. Refer to TECHNIQUES OF OPERATION</li> <li>3. Replace gasket.</li> </ol>
MOTOR RUNS IN ONE DIRECTION ONLY.	<ol style="list-style-type: none"> <li>1. Power only applied to one terminal.</li> <li>2. Broken wire or bad connection.</li> </ol>	<ol style="list-style-type: none"> <li>1. Check equipment power supply.</li> <li>2. Check wiring condition and connections.</li> </ol>
MOTOR RUNS, BUT DRUM DOES NOT TURN.	<ol style="list-style-type: none"> <li>1. Sheared drum shaft key.</li> <li>2. Stripped bronze gear.</li> <li>3. Parted shaft.</li> </ol>	<p>1-3. Dis-assemble winch to NOT TURN. determine cause and repair.</p>
<p>MOTOR RUNS EXTREMELY HOT.</p> <p>MOTOR RUNS, BUT WITH INSUFFICIENT POWER, OR WITH LOW LINE SPEED.</p>	<ol style="list-style-type: none"> <li>1. Long period of operation.</li> <li>2. Insufficient battery.</li> <li>3. Electrical cables from battery to winch too small.</li> <li>4. Bad electrical.</li> <li>5. Insufficient charging system.</li> </ol>	<ol style="list-style-type: none"> <li>1. Cooling-off periods are essential to prevent over heating.</li> <li>2. Check battery terminal voltage under load. If 10 volts or less, replace or parallel another battery to it at motor terminal.</li> <li>3. Must be #2 Ga. wire for battery to winch too small. battery to winch. Use larger than #2 Ga. for distances greater than 15 feet.</li> <li>4. Check all connections for looseness or corrosion; Tighten, clean and grease.</li> <li>5. Replace with larger system.</li> </ol>
MOTOR WILL NOT OPERATE.	<ol style="list-style-type: none"> <li>1. Inoperative motor.</li> <li>2. Loose connections.</li> </ol>	<ol style="list-style-type: none"> <li>1. Check equipment power supply check for voltage at armature post; replace motor.</li> <li>2. Tighten connections on motor.</li> </ol>

# DIMENSIONAL DRAWING

## DCG8R



**DIMENSIONS SHOWN ARE MILLIMETERS OVER INCHES**

# TEST PROCEDURE FOR MOTOR

The Ramsey Winch motor is a (4 pole-4 coil) series wound 12 volt or 24 volt DC motor. The 4 pole, 4 coil feature provides high torque at low speeds. To test the motor to determine if it is functioning properly, first securely fasten the motor to a bench or work surface so it will not jump or move around during test procedure (the starting torque of motor is high).

1. Connect a jumper wire (at least a number 6 wire) from F-1 to "A" motor terminals (See Figure 1).
2. Attach a wire (at least a number 6 wire) from positive ( + ) battery terminal to F-2 motor terminal. Ground negative(-) battery terminal to motor isolated ground terminal. (See Figure 1). Motor should now run.

To reverse the direction of rotation:

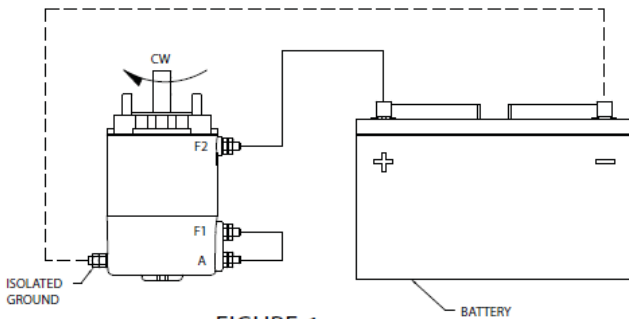
1. Attach jumper wire from F-2 to •• motor terminals (See Figure 2).
2. Attach wire from positive (+)battery terminal to F-1 motor terminal. Ground negative(-) battery terminal to motor isolated ground terminal (See Figure 2).

**NOTE:** Always attach battery wire solidly to motor terminals. Make and break the connection of negative (-) battery terminal at the motor isolated ground terminal. This avoids burning the motor terminals.

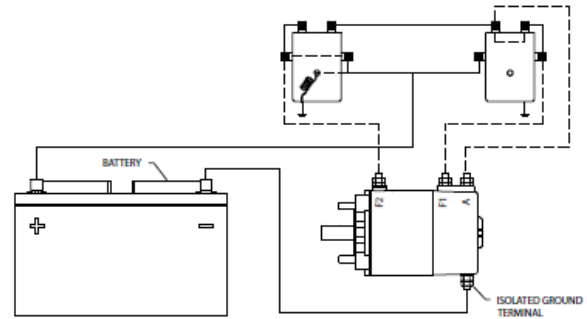
**CAUTION:** Do not run the motor for a long period of time in fashion mentioned above, because the motor could become damaged.

The motor running idle on the bench will draw 55 amperes and must run free and easy. If the ampere draw is more than 60 amps and the motor runs rough or has a strange sound, it should be replaced. With the motor attached in place on a winch (less cable on drum) the ampere draw should be approximately 65 to 70 amps.

If after following the procedure outlined, the test on the winch significantly exceeds 70 amperes refer to your Owners Manual for trouble shooting suggestions on the mechanical portion of the winch. See Figure 3 for the solenoids connection to the motor and the battery.

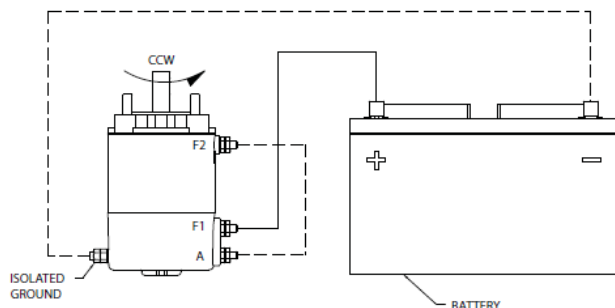


**FIGURE-1**  
MOTOR-CLOCKWISE ROTATION

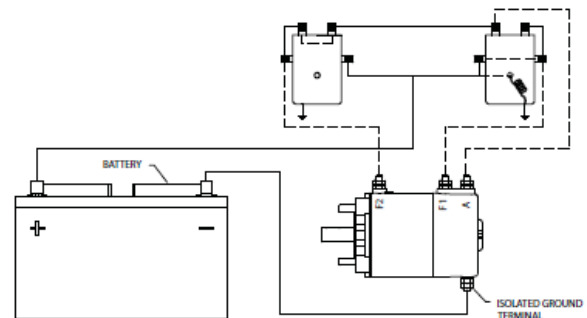


**SOLENOIDS TO MOTOR CONNECTIONS**

THE DASHED LINES ARE CURRENT'S PATH IN FORWARD ROTATION.  
SOLID LINES ARE CURRENT'S PATH AT ALL TIMES.  
**NOTE.** DIRECTION OF MOTOR ROTATION DEPENDS ON WHICH SMALL  
TERMINAL OF EITHER SOLENOID IS CONNECTED TO BATTERY'S  
POSITIVE TERMINAL.



**FIGURE-2**  
MOTOR-COUNTER CLOCKWISE ROTATION



**SOLENOIDS TO MOTOR CONNECTIONS**

THE DASHED LINES ARE CURRENT'S PATH IN REVERSE  
ROTATION. SOLID LINES ARE CURRENT'S PATH AT ALL TIMES.

**FIGURE-3**

# KITS AND MAINTENANCE PARTS

110709 & 110713



# KITS AND MAINTENANCE PARTS

## 110709 & 110713

Item#	QTY.	PART NUMBER	DESCRIPTION	WINCHES		KITS						
				110703	110713	207030	207058	246059	248067	250518	250528	283094
1	1	262037	ELECTRIC MOTOR ASSEMBLY									
2	1	306034	SPRING-FLAT, BRK			X						
3	1	314008	CAM PLATE				X					
4	1	320379	DRUM									
5	1	320836	BRACKET									
6	1	320837	MOUNTING BRACKET									
7	1	320838	TIE BAR									
8	1	320839	TIE BAR-FRONT									
9	1	328128	COVER-WM BRK									
10	2	334003	GEAR-INTER&DRIVE								X	
11	1	338007	BRAKE HOUSING									
12	1	338053	HOUSING									
13	1	340002	HUB-BRAKE				X					
14	1	342023	KEY-SQ ENDS, 3/16X3/16X1/2 LG								X	
15	1	342027	KEY-RD ENDS, 3/16X3/16X1LG									
16	1	342198	KEY-1/4 X 1/4 X 2.12 LG									
17	1	352022	RETAINER PLATE				X					
18	1	368192	WORM-RH 10.39LG									
19	2	400003	BALL-POPPET 3/8 OD			X						
20	2	402002	BEARING-BALL							X		
21	1	412045	BUSHING-GH						X			
22	6	414021	BOLT-1/4NCX1, HXD, G8									
23	12	414038	CAPSCREW-1/4-20NCX3/4, HXHD, GR-5									
24	7	414136	CAPSCREW-5/16-18NCX1LG, HXHD									
25	1	414224	BOLT-3/8-16NCX1 1/2, HX, G5									
26	4	414821	CAPSCREW-1/4-20NC X7/8, HXSOCBUTTHD									
27	4	414845	CAPSCREW-1/4-20NC X1, HXSOC HD									
28	1	414865	CAPSCREW-5/16-18NCX1LG HX SOC HD									
29	2	416029	SETSCREW-1/4-20X5/16, HXSOC									X
30	1	418036	NUT-3/8-16 NC, HEX JAM									
31	3	418040	NUT-3/8-24NF HEX REG									
32	2	418154	WASHER-1/4									
33	8	418163	LOCKWASHER-5/16									
34	3	418177	LOCKWASHER-3/8									
35	1	418181	WASHER-3/8 ID									
36	2	442184	GASKET					X		X		
37	1	442185	GASKET-SPUR GR BX					X		X		
38	1	442189	GASKET-BRK HSG COVER					X		X		
39	2	456008	RELIEF FIT-1/8-27PFT									
40	1	468002	RED-3/8-1/8NPTF									

# KITS AND MAINTENANCE PARTS

## 110709 & 110713

Item#	QTY.	PART NUMBER	DESCRIPTION	WINCHES		KITS						
				110703	110713	207030	207058	246059	248067	250518	250528	283094
41	1	468010	PIPE PLUG-1/4-18 NPTF,SQ HD									
42	3	468017	PIPE PLUG-1/4-18NPTF,HEX SOC HD									
43	1	468018	PIPE PLUG-3/8-18NPTF HXSOCHD									
44	1	468024	REDUCER-1/8-1/4 NPTF									
45	2	470001	DOWEL PIN-3/16 DIA X 3/4 LG									
46	1	474001	PLATE-THRUST			X						
47	1	486069	SEAL-3/8 THRD					X				
48	4	486070	SEAL					X				
49	1	490003	SNAP RING , ID-.693,.045-THK								X	
50	1	494007	SPRING,.525X9/16LG			X						
51	3	518002	THRUST WASHER, ID-.766,.094-THK								X	
52	2	518063	WASHER, ID-1.250,.063-THK						X			
53	1	216043	ASSEMBLY-CABLE, 7/32 DIA. X 62 FT.									
54	1	334001	GEAR-IDLER								X	
55	1	342033	KEY-SQ ENDS,3/16X3/16X1-7/16LG								X	
56	1	356901	SHAFT-SPUR GH,3/4X2 13/16LG								X	
57	1	338203	HSG-SPUR GR									
58	3	402001	BEARING NEEDLE									
59	1	486009	OIL SEAL					X		X		
60	1	486023	SHAFT, SEAL					X			X	X
61	1	328106	COVER-SPUR GH									
62	1	328009	COVER									
63	1	334007	GEAR-RH							X		
64	1	338238	HOUSING-GEAR									
65	2	342075	KEY-RD ENDS,5/16X5/16X.937							X		
66	1	357515	SHAFT-OUTPUT							X		
67	2	412046	BUSHING-GH						X			
68	8	414020	BOLT-1/4-20NCX3/4,HXD,G5									
69	1	442186	GASKET-GH COVER					X		X		
70	1	486017	OIL SEAL					X		X		
71	1	518015	THRUST WASHER, ID-1.252,.06-THK						X			
72	1	334129	PINION								X	X
73	1	450001	KEY-WOODRUFF								X	X
74	1	462015	O-RING-1/8 X 3/4 X 1 OD					X			X	

**RAMSEY WINCH INDUSTRIAL WINCH  
LIMITED WARRANTY**

**1.1 Scope of Warranty Coverage.** Upon the terms and subject to the conditions set forth in this limited warranty:

- (a) RAMSEY WINCH (referred to herein as “**RAMSEY WINCH**” or the “**Manufacturer**”) warrants to each initial end user customer (a “**Purchaser**”) of a new industrial winch together with any accessories manufactured and sold directly from RAMSEY WINCH (the “**Product**”) that the Product shall be free from defects in material and workmanship, under normal working and service conditions, for a period of eighteen (18) months from the date the Product is shipped from RAMSEY WINCH. (the “**Warranty Term**”). A Purchaser shall be eligible for an additional eighteen (18) months of coverage in addition to the Warranty Term (also referred to as the “**Standard (+) PLUS benefit**”) only if the Purchaser (i) complies with Section 1.2(a) and (ii) registers the Product during the Warranty Term at [myproduct.ramseywinch.com](http://myproduct.ramseywinch.com).
- (b) Notwithstanding the foregoing, this warranty does not cover components damaged by accident, abuse, misuse, neglect, untrained operators, collision, overloading, modification, disassembly, rework, misapplication, improper installation, lack of lubrication or maintenance, or improper service. This warranty does not cover the paint or material finish, rope (wire or synthetic), removal or reinstallation of the winch, or normal wear and tear and loss of functionality due to aging of the Product (which may include but is not limited to bearings, bushings, seals, O-rings, gaskets, brake material, motor brushes, electrical cables and more).

**1.2 Eligibility of Warranty Coverage.**

- (a) A Purchaser shall be eligible for warranty coverage under this Limited Warranty during the Warranty Term only if:
  - (i) Prior to placing a Product in service, and throughout use of the Product during the Warranty Term, the Purchaser provides (or causes to be provided) proper storage such that foreign objects (e.g. rain or debris) cannot enter any Product through entry ports which are normally closed during operation.; and
  - (ii) The Purchaser maintains, or causes to be maintained, the Product according to commercially reasonable standards and utilizes the Product for the purposes for which it was created; and
  - (iii) No repairs or alterations have been made by any party other than RAMSEY WINCH, including Purchaser, unless otherwise authorized in writing by RAMSEY WINCH.

**1.3 Transferability of Warranty.**

- (a) This warranty is transferable only from the Purchaser to the first subsequent transferee (the “**Transferee**”) of the Product from Purchaser upon (i) written notification to RAMSEY WINCH and (ii) registration of the transfer, both within 30 days of such Product transfer.
- (b) Upon satisfaction of transfer requirements set forth in Section 1.3(a), the Transferee shall succeed to all the rights and obligations of the Purchaser set forth in this Limited Warranty.

**1.4 Certain Limitations on Scope of Warranty Service.**

- (a) Any obligation of RAMSEY WINCH under this warranty, statutory or otherwise, is limited to the repair of the Product, at its factory or Authorized Service Centers. Notwithstanding the foregoing, if field service or repair is performed by RAMSEY WINCH at the request of the Purchaser and no defect is found with material or workmanship of the Product, the Purchaser shall compensate RAMSEY WINCH for its time and expenses within thirty (30) days of delivery of an invoice relating to the same. If repair is determined by RAMSEY WINCH in its sole, absolute and uncontrolled discretion to be impossible or impractical, then RAMSEY WINCH may satisfy this warranty by replacing the Product. RAMSEY WINCH will not provide any cash payment or credits for defective materials or workmanship.

- (b) Purchaser shall be responsible for any and all freight charges for any Product receiving warranty service under this limited warranty. Any travel time, transportation charges, freight charges, or similar costs incurred by RAMSEY WINCH in connection with the replacement or repair of defective parts, shall, be the responsibility of the Purchaser. If applicable, RAMSEY WINCH shall invoice Purchaser for the total amount of such charges within sixty (60) days of fulfilling its duties under this warranty, payable within thirty (30) days of delivery of such invoice. In no event shall RAMSEY WINCH be liable for bills for service, labor or other expenses that have been incurred by the Purchaser without approval or prior authorization by RAMSEY WINCH for inspection, maintenance, or repair of the Product.
- (c) If a Product is found to be operable upon inspection, the Product, at Purchaser's election, may be either (1) returned to the Purchaser with a service charge from RAMSEY WINCH for inspection, cleaning, and routine replacement of all rubber components and any other parts that show wear; or (2) RAMSEY WINCH can dispose of the product safely.

1.5 **Limitations of Liability.** RAMSEY WINCH shall in no event be liable for punitive, special or consequential damages relating to the Product or this Warranty. RAMSEY WINCH makes no warranty in respect to third-party accessories, upgrades, or additions to the Product.

1.6 **Improving Product.** RAMSEY WINCH reserves the right to improve the Product through changes in design or materials as it may deem desirable or necessary without being obligated to incorporate, upgrade, or otherwise modify previously manufactured products.

1.7 **Limitations of Warranty.**

- (a) THE WARRANTY SET FORTH ABOVE IS THE ONLY EXPRESS WARRANTY. RAMSEY WINCH HEREBY DISCLAIMS AND EXCLUDES ANY OTHER EXPRESS, IMPLIED, OR STATUTORY WARRANTIES, ARISING BY OPERATION OF LAW, COURSE OF DEALING, COURSE OF PERFORMANCE, USAGE, OF TRADE, OR OTHERWISE, INCLUDING, WITHOUT LIMITATION, ANY WARRANTIES OF MERCHANTABILITY, FITNESS FOR A PARTICULAR PURPOSE, AND INTELLECTUAL PROPERTY RIGHTS OF A THIRD PARTY.
- (b) ANY IMPLIED WARRANTY WHICH BY LAW MAY NOT BE EXCLUDED IS LIMITED IN DURATION TO ONE (1) YEAR FROM THE DATE OF ORIGINAL RETAIL PURCHASE OF THE PRODUCT.
- (c) This warranty gives you specific legal rights, and you may also have other rights which vary from jurisdiction to jurisdiction.
- (d) This warranty is valid only in the U.S.A. and Canada. For warranty outside the U.S.A. and Canada contact your nearest Ramsey Winch Distributor.

1.8 **No Modifications to Warranty.** No RAMSEY WINCH dealer, distributor, agent or employee is authorized to make any modification, extension or addition to this warranty.

1.9 **How to Apply for Warranty Coverage.**

All claims are handled by contacting your nearest Ramsey Winch Distributor. For questions, please contact customer support: [rwcustomersupport@ramseyindustries.com](mailto:rwcustomersupport@ramseyindustries.com).

Visit [Dealer Locator - Ramsey Winch](#) for Ramsey Winch Distributor locations and contact information.

Additional warranty, service support, product information, and parts information can be found on [www.ramseywinch.com](http://www.ramseywinch.com).

