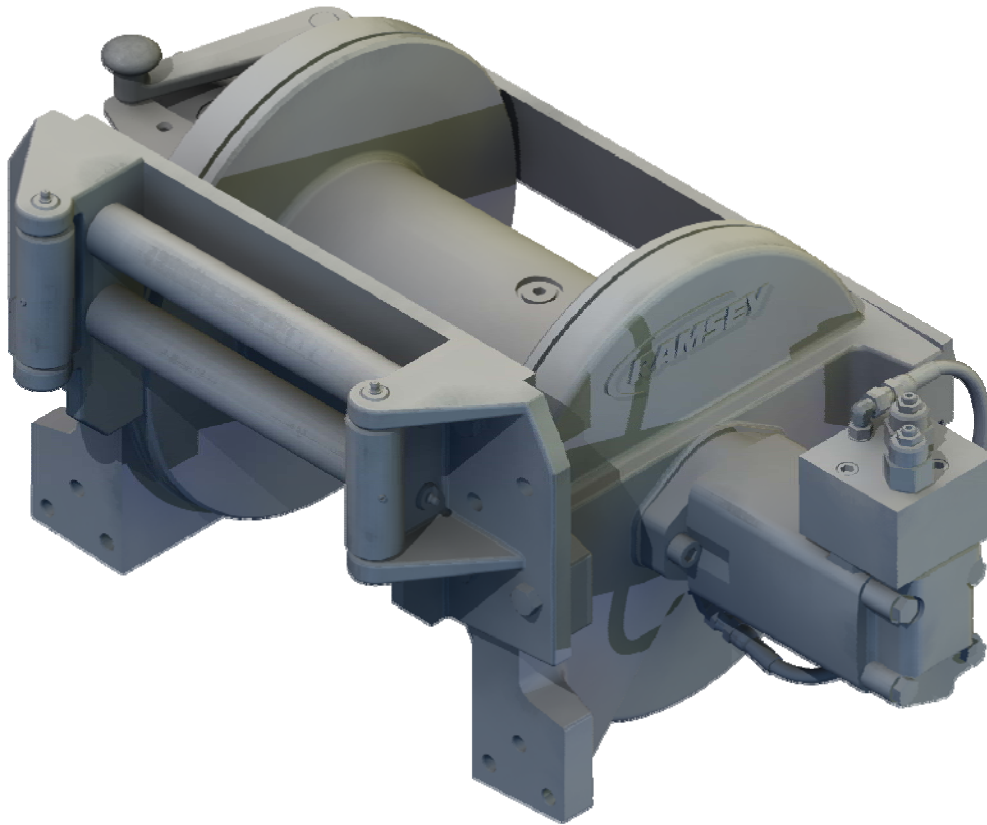




OPERATING, SERVICE AND MAINTENANCE MANUAL



20,000 LB INDUSTRIAL WINCH



CAUTION: READ AND UNDERSTAND THIS MANUAL BEFORE INSTALLATION AND OPERATION OF WINCH. SEE WARNINGS!

TABLE OF CONTENTS

WARRANTY INFORMATION	1
SPECIFICATIONS.....	1
WARNINGS.....	1
CABLE INSTALLATION	2
HYDRAULIC SYSTEM REQUIREMENTS.....	3
PERFORMANCE CHARTS	3
CLUTCH OPERATION	4
WINCH OPERATION.....	4
MAINTENANCE.....	4
TROUBLE SHOOTING GUIDE.....	5
INSTRUCTIONS FOR OVERHAUL.....	6
TORQUE CHART	13
20K DIMENSIONAL DRAWING	15
20K WINCH PARTS DRAWING.....	16
PARTS LIST – 20K WINCH	17
LIMITED WARRANTY	18

RAMSEY HYDRAULIC PLANETARY WINCH MODEL 20K

PLEASE READ THIS MANUAL CAREFULLY

This manual contains useful ideas in obtaining the most efficient operation from your Ramsey Winch, and safety procedures one needs to know before operating a Ramsey Winch. Do not operate this winch until you have carefully read and understand the "WARNINGS" and "OPERATION" sections of this manual.

WARRANTY INFORMATION

Ramsey Winches are designed and built to exacting specifications. Great care and skill go into every winch we make. If the need should arise, warranty procedure is outlined on the back of your self-addressed postage paid warranty card. Please read and fill out the enclosed warranty card and send it to Ramsey Winch Company. If you have any problems with your winch, please follow instructions for prompt service on all warranty claims. Refer to back page for limited warranty.

SPECIFICATIONS*

Rated Line Pull	(lbs.)	20,000			
	(Kg.)	9070			
Gear Reduction		21:1			
Weight (without cable)	20K Winch.....		337 lbs			
LAYER OF CABLE		1	2	3	4	5
*Rated line pull per layer	lbs.	20,000	17,300	15,200	13,600	12,300
	Kg.	9,070	7,840	6,890	6,160	5,570
* Cable Capacity per Layer						
20K Winch	ft.	30	70	115	165	220
	m	9	21	35	20	67
* Line Speed (at 30 GPM)	FPM	42	47	53	59	65
	MPM	12.1	13.6	15.5	17	18.8
* These specifications are based on recommended wire rope of 9/16" Extra Improved Plow Steel cable and a 14.9 cu. in. / Rev. motor.						

NOTE: The rated line pulls shown are for the winch only. Consult the wire rope manufacturer for wire rope ratings

WARNINGS:

CLUTCH MUST BE FULLY ENGAGED BEFORE STARTING THE WINCHING OPERATION.

DO NOT START WINCH MOTOR BEFORE ENGAGING CLUTCH.

DO NOT DISENGAGE CLUTCH UNDER LOAD.

STAY OUT FROM UNDER AND AWAY FROM RAISED LOADS.

STAND CLEAR OF CABLE WHILE PULLING. DO NOT TRY TO GUIDE CABLE.

DO NOT EXCEED MAXIMUM LINE PULL RATINGS SHOWN IN TABLE.

DO NOT USE WINCH TO LIFT, SUPPORT, OR OTHERWISE TRANSPORT PEOPLE.

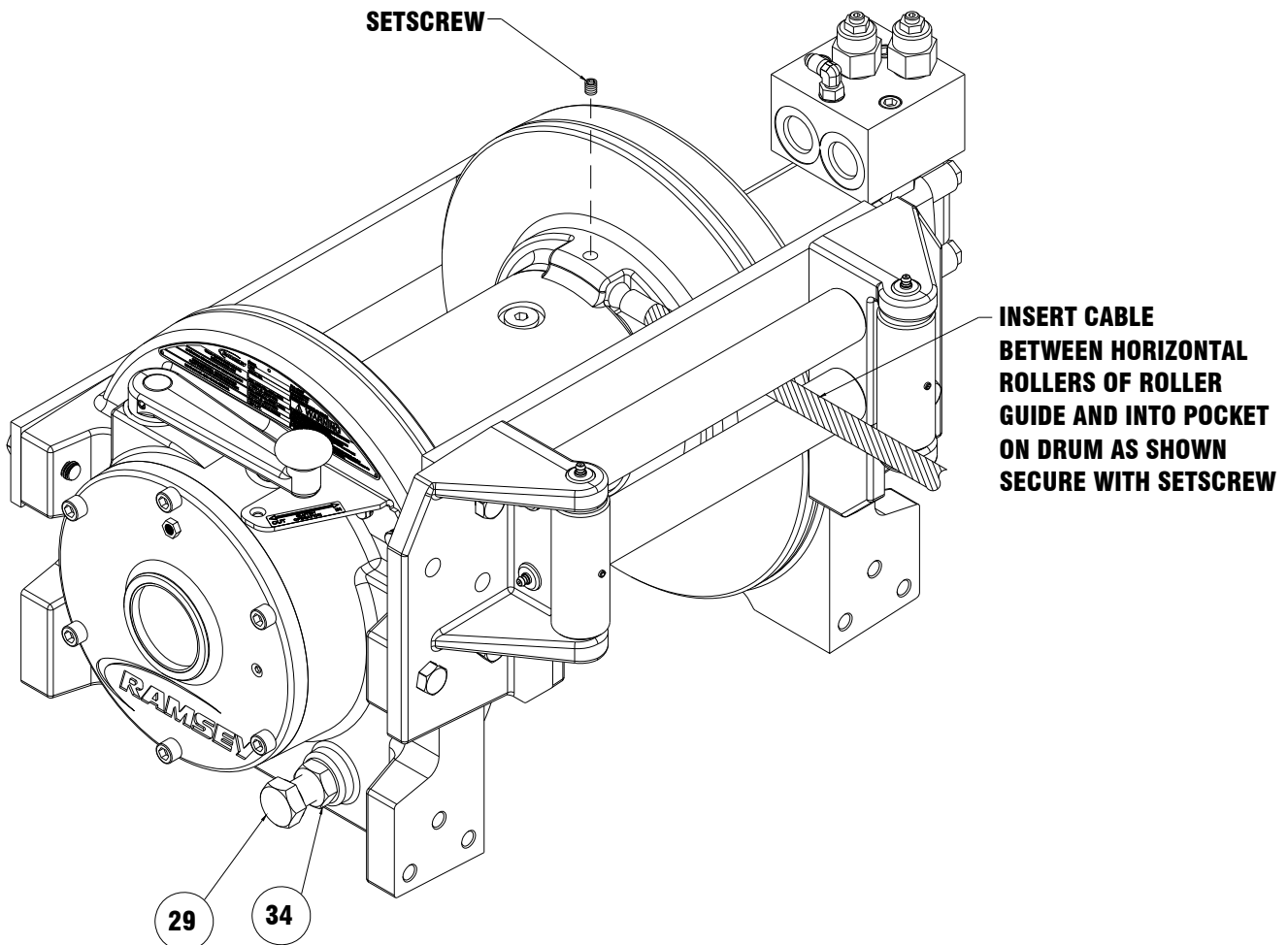
A MINIMUM OF 5 WRAPS OF CABLE AROUND THE DRUM BARREL IS NECESSARY TO HOLD THE LOAD.

CABLE ANCHOR IS NOT DESIGNED TO HOLD LOAD.

CABLE INSTALLATION

1. Unwind cable by rolling it out along the ground to prevent kinking. Securely wrap end of wire rope, opposite hook, with plastic or similar tape to prevent fraying.
2. Place taped end of cable through roller guide and into hole in cable drum as shown below. Use 3/8"-16NC X 3/8" Lg. Hex socket drive setscrew to secure cable to drum.
3. Carefully run the winch in the "reel-in" direction. Keeping tension on end of cable, spool all the cable onto the cable drum, taking care to form neatly wrapped layers.

After installing cable, check freespool operation. Disengage clutch and pull on cable at walking speed. If cable "birdnests", loosen jam nut #34 and turn 3/8"-16NC capscrew #29 clockwise to increase drag on drum. If cable pull is excessive, loosen 3/8"-16NC capscrew #29 by turning counterclockwise. Tighten jam nut when proper setting is obtained.



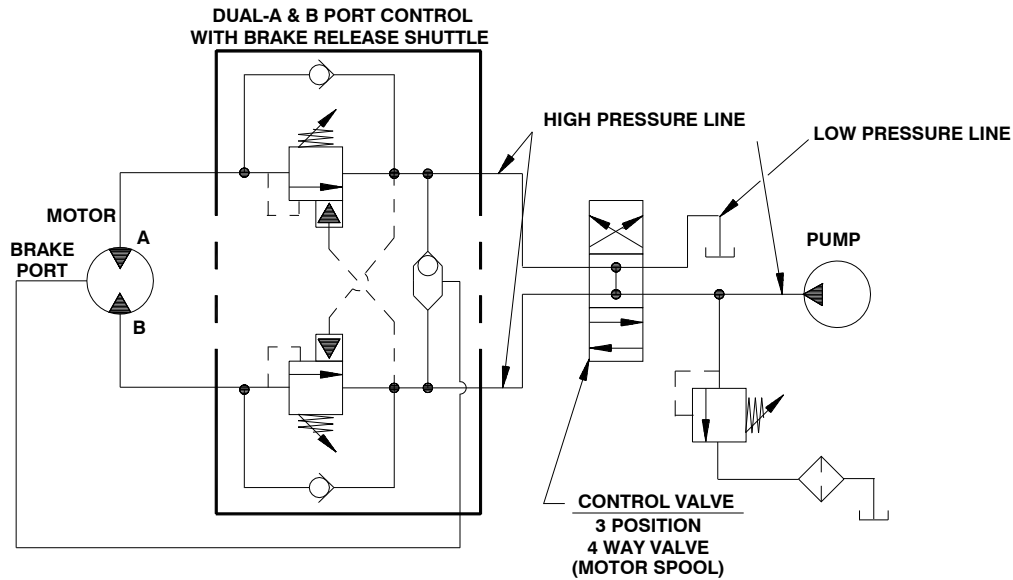
HYDRAULIC SYSTEM REQUIREMENTS

Refer to the performance charts, below, to properly match your hydraulic system to Linemaster 20K winch performance. The charts consist of:

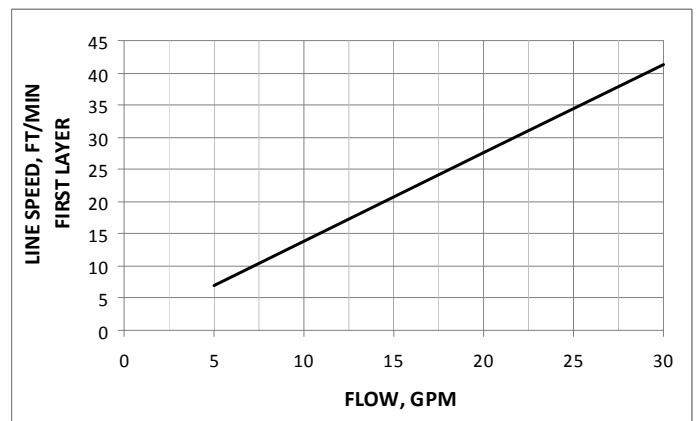
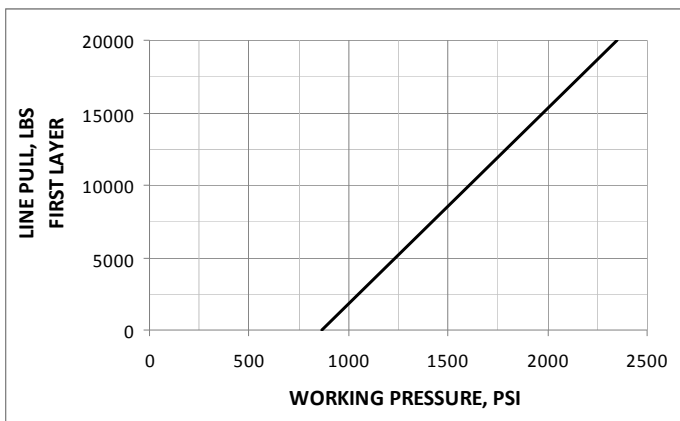
- (1) Line pull (lb.) first layer vs. working pressure (PSI) and (2) Line speed, first layer (FPM) vs. gallons per minute (GPM). Performance based on a motor displacement of 14.9 cubic inches with 30 GPM maximum flow rate. Motor has (2) 1.062-12 SAE straight thread o-ring ports.

Note: A motor spool (open center) directional control valve is required for brake operation.

TYPICAL LAYOUT



PERFORMANCE CHARTS



BASED ON 14.9 CU IN/REV MOTOR

CLUTCH OPERATION

WARNING: CLUTCH MUST BE FULLY ENGAGED BEFORE STARTING THE WINCHING OPERATION.

To engage clutch:

1. Grasp shift lever and push toward drum to the "In" position.
2. If shift lever detent does not engage to the detent hole, then the clutch is not fully engaged. The cable drum may need to be manually rotated slightly while pushing on the shift lever to align the clutch splines.

WARNING: DO NOT DISENGAGE CLUTCH UNDER LOAD.

To disengage clutch:

1. Run the winch in the "cable out" direction until the load is off the cable.
2. Grasp the shift lever and pull away from drum to the "Out" position until shift lever detent engages in detent hole. If there is resistance in moving the shift lever, the cable drum may be manually rotated in the cable "Out" direction thereby relieving the preload and allowing the lever to shift. The cable may now be pulled off by hand.

WINCH OPERATION

The best way to get acquainted with how your winch operates is to make test runs before you use it. Plan your test in advance. Remember, you hear your winch, as well as see it operate; learn to recognize the sounds of a light steady pull, a heavy pull, and sounds caused by load jerking or shifting. Gain confidence in operating your winch and its use will become second nature with you.

The uneven spooling of cable, while pulling a load, is not a problem, unless there is a cable pileup on one end of drum. If this happens reverse the winch to relieve the load and move your anchor point further to the center of the vehicle. After the job is done you can unspool and rewind for a neat lay of the cable.

MAINTENANCE

Adhering to the following maintenance schedule will keep your winch in top condition and performing as it should with a minimum of repair.

A. WEEKLY

1. Check the oil level and maintain it to the oil level plug. If oil is leaking out, determine location and repair.
2. Check the pressure relief plug on the gear housing cover. Be sure that it is not plugged. Lubricate cable with light oil.

B. MONTHLY

1. Check the winch mounting bolts. If any are missing, replace them and securely tighten any that are loose. Use grade 8 or better bolts.
2. Inspect the cable. If the cable has become frayed with broken strands, replace immediately.

C. ANNUALLY

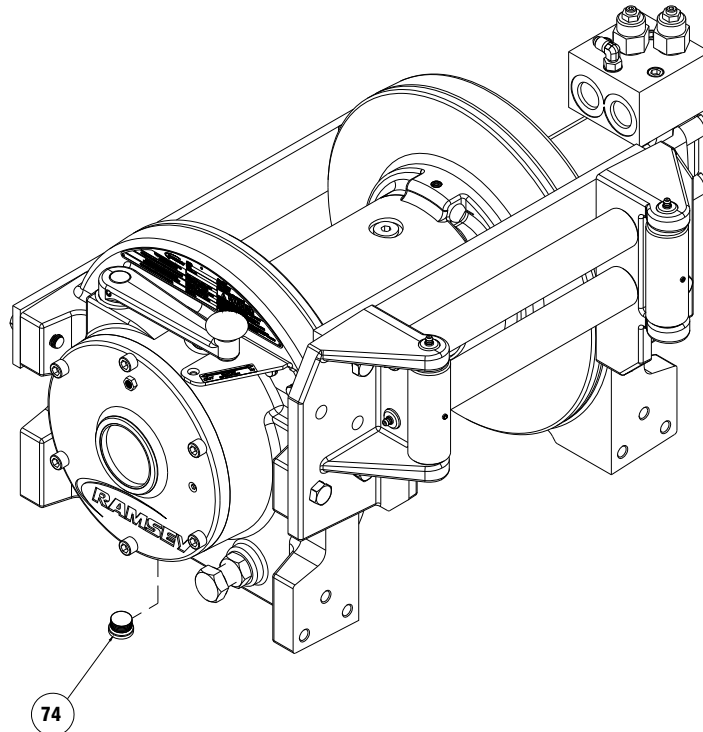
1. Drain the oil from the winch annually or more often if winch is used frequently.
2. Fill the winch to the oil level plug with clean kerosene. Run the winch a few seconds with no load in the reel in direction. Drain the kerosene from the winch.
3. Refill the winch to the oil level plug with all purpose SAE 75W-90 Synthetic Gear oil.
4. Inspect bumper and surrounding structure for cracks or deformation.

TROUBLE SHOOTING GUIDE

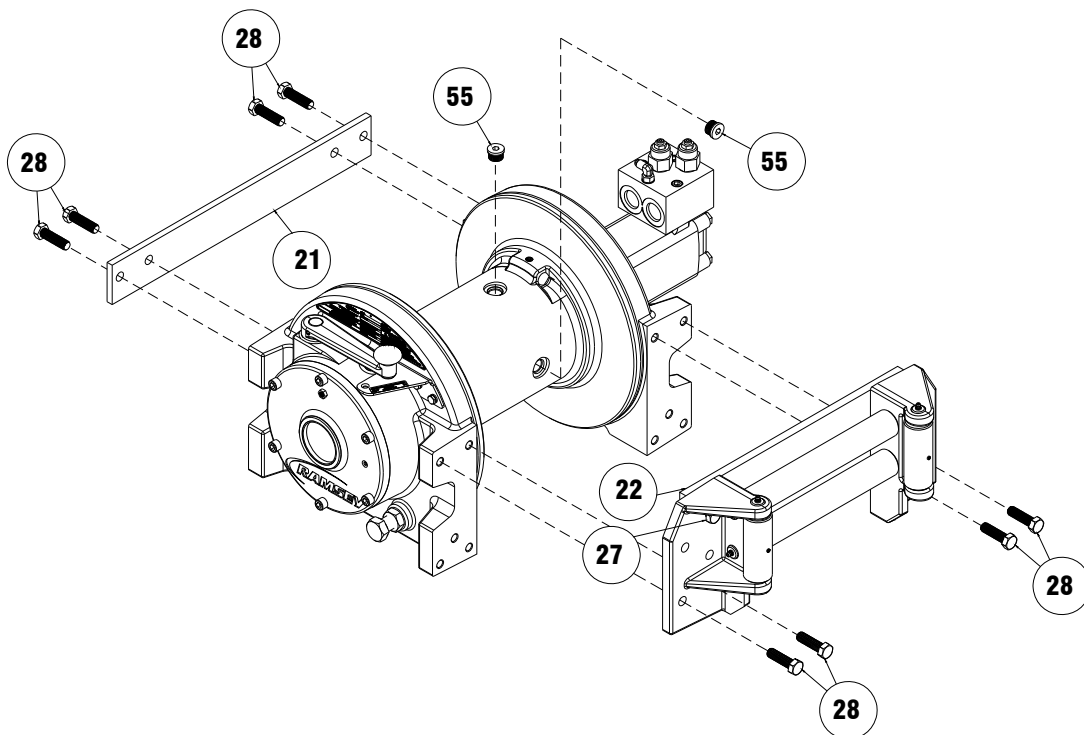
CONDITIONS	POSSIBLE CAUSE	CORRECTION
OIL LEAKS FROM WINCH	<ol style="list-style-type: none">1. Seals damaged or worn.2. Too much oil.3. Damaged gaskets.4. Damaged o-rings.	<ol style="list-style-type: none">1. Replace seal.2. Drain excess oil. Refer to OPERATION.3. Replace gaskets.4. Replace o-rings.
WINCH RUNS TOO SLOW	<ol style="list-style-type: none">1. Low flow rate2. Hydraulic motor worn out.	<ol style="list-style-type: none">1. Check flow rate. Refer to HYDRAULIC SYSTEMS performance chart page 3.2. Replace motor.
CABLE DRUM WILL NOT FREESPOOL	<ol style="list-style-type: none">1. Clutch not disengaged	<ol style="list-style-type: none">1. Check operation, refer to page 4.
BRAKE WILL NOT HOLD	<ol style="list-style-type: none">1. Incorrect directional control valve. (Cylinder spool, closed center).	<ol style="list-style-type: none">1. Use only a motor spool (open center) directional control valve.

INSTRUCTIONS FOR OVERHAUL

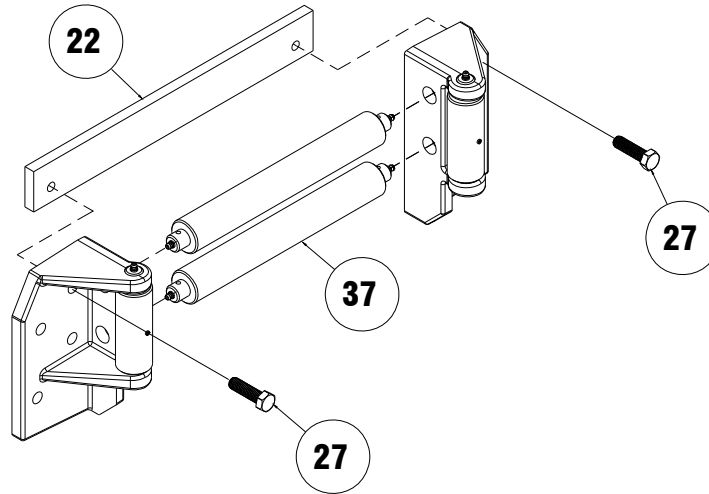
1. Drain oil from gear housing by removing plug #74 from drain hole in end bearing.



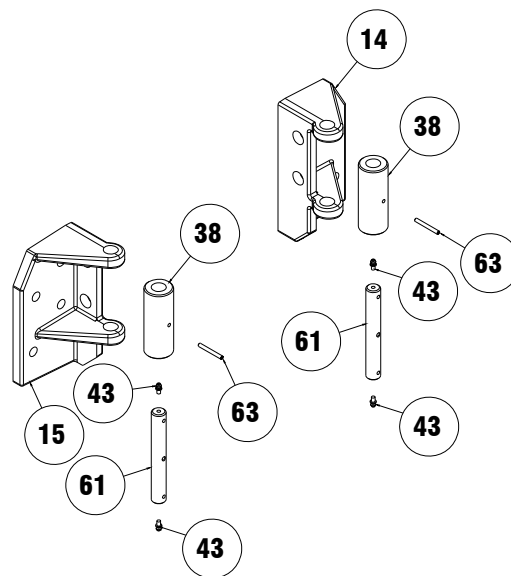
2. Freespool drum to locate drain hole in bottom. Remove plugs #55 from barrel of drum. Drain oil from drum barrel. Remove tie plate #21 by loosening (2) capscrews #28 each side. Loosen but do not remove (2) capscrews #27 on roller guide tie plate #22. Remove (4) capscrews #28 and roller guide.



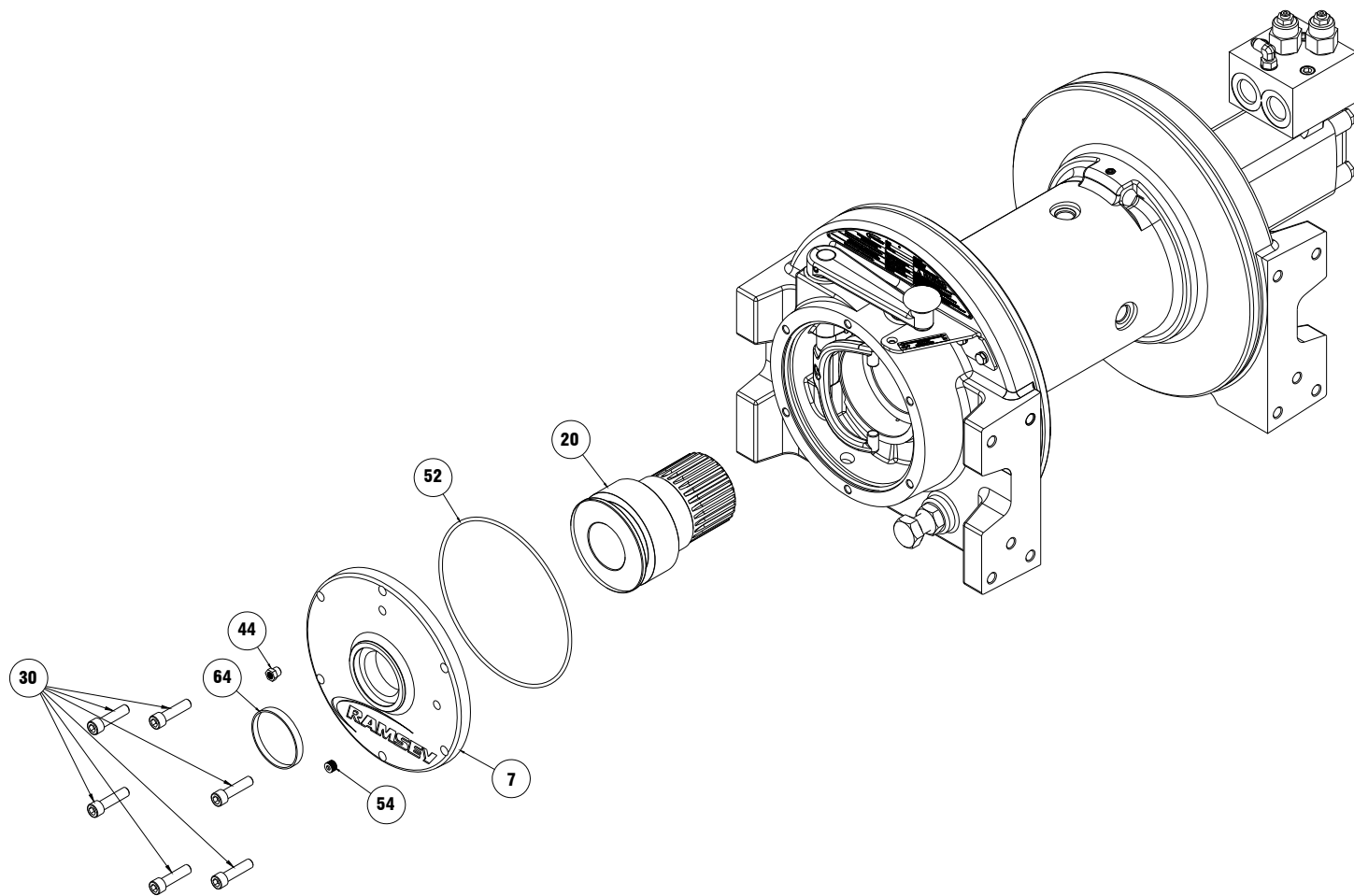
3. Position roller guide face down on a level surface and (2) capscrews #27 and roller guide tie bar #22. Horizontal rollers #37 can be removed from the left and right hand roller guides once the tie bar has been removed. Horizontal rollers #37 have (2) lube fittings #43, one located at either end of the roller.



4. Remove vertical roller pin #61 from right hand side of roller guide #14 by removing spring pin #63. Spring pins should be removed by driving inward through the roller. Vertical roller pin #61 has (2) lube fittings #43, one located at either end of the roller pin. Once the vertical roller pin is removed from right hand side of roller guide, vertical roller #38 can be removed. Remove vertical roller from left hand side of roller guide #15 in the same way.



5. Remove (6) capscrews #30 and clutch housing cover #7. Remove relief fitting #44 and plug #54 from clutch housing cover #7 as shown. Remove clutch housing o-ring #52 and plug #64. Pull shifter lever away from drum and slide clutch yoke #20 from shaft.

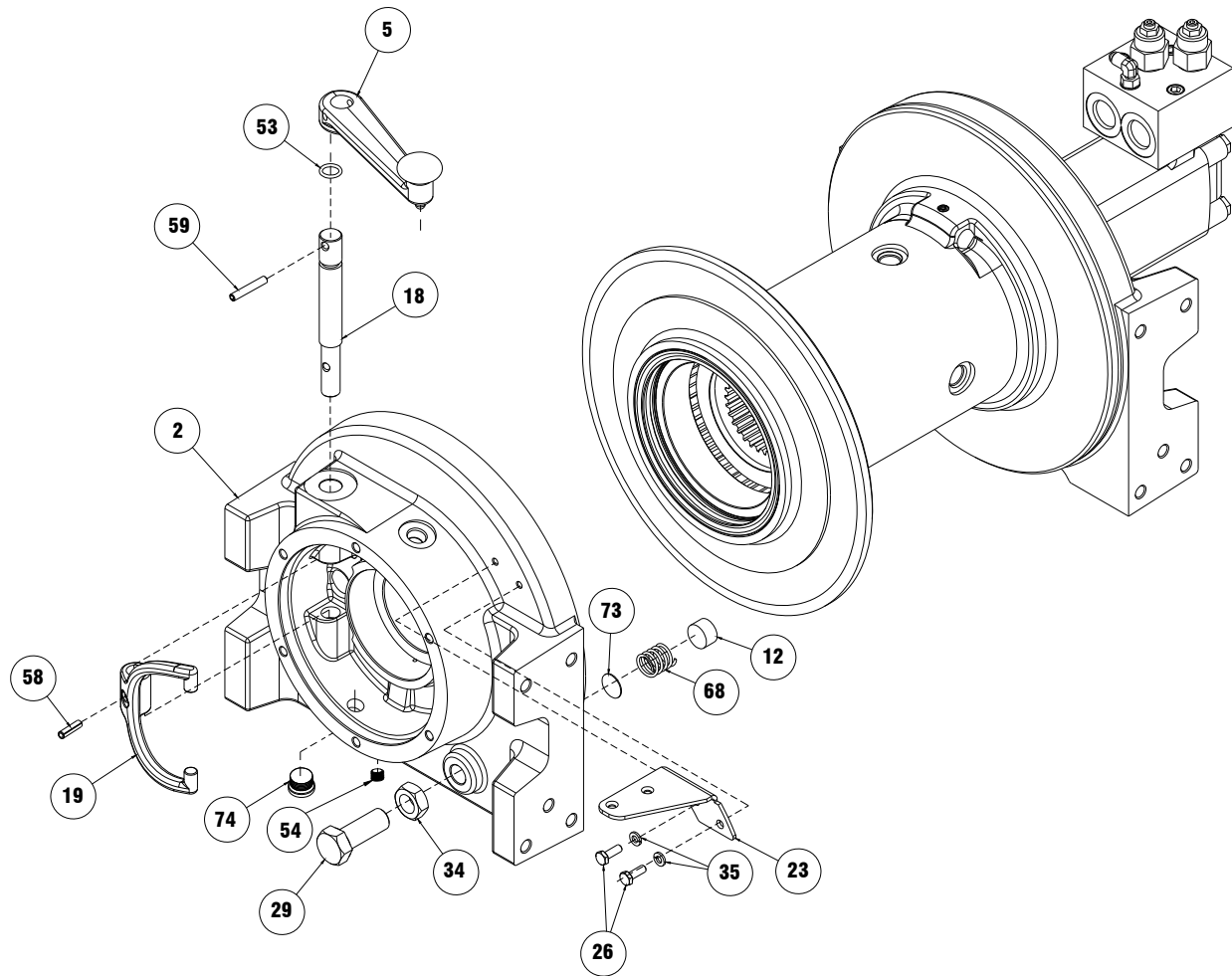


6. Slide clutch end bearing #2 from drum. Drum freespool drag puck #12, drum freespool spring # 68, and brake disc spacer # 73 will fall out when end bearing is removed from drum. Retain these items for re-assembly.

To remove shifter yoke #19, drive spring pin #59 inward through shifter yoke. Lift shifter assembly out by pulling up on shifter handle assembly #5 until shifter shaft #18 is clear of shifter yoke #19. Yoke can then be lifted out of end bearing.

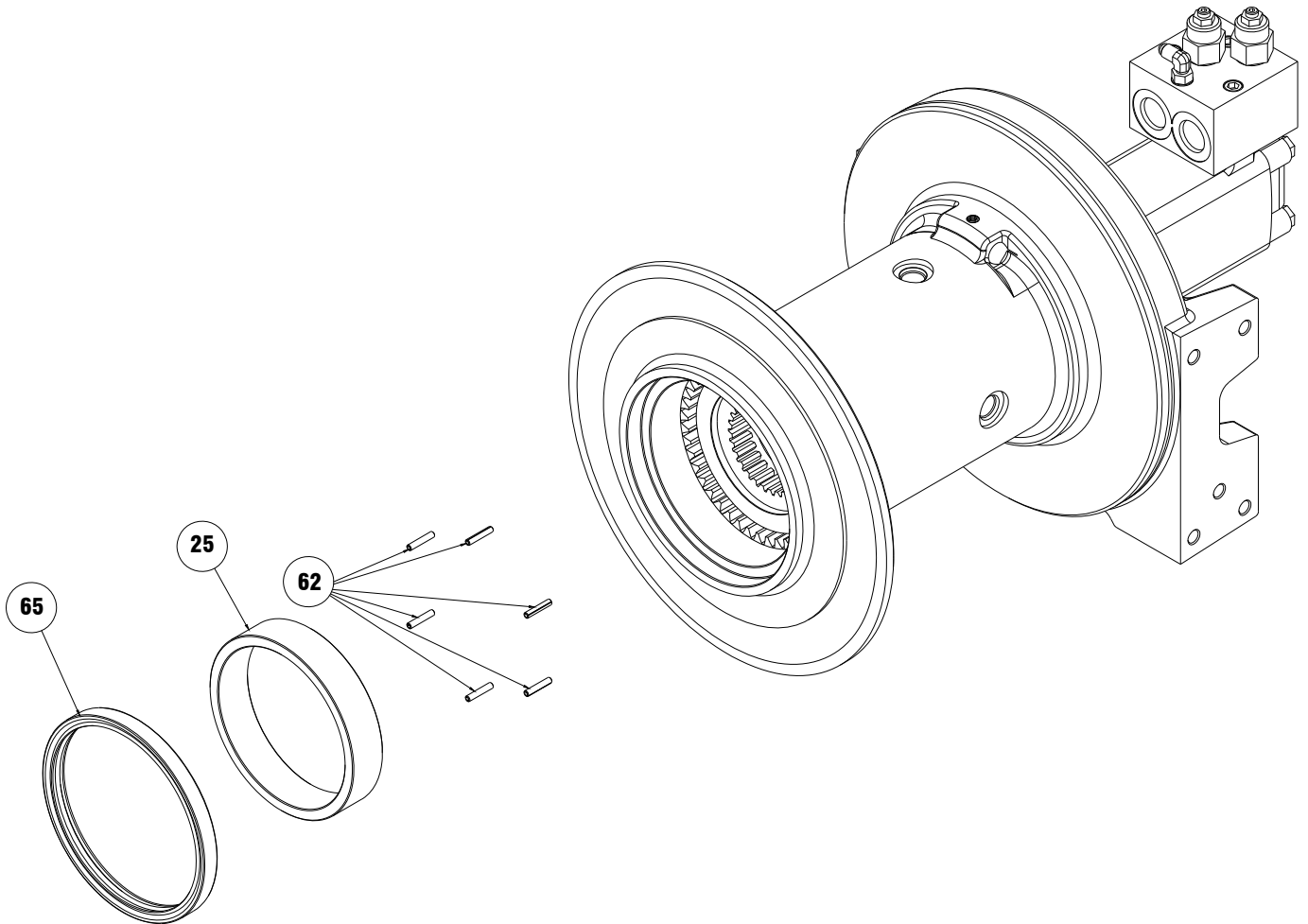
To replace handle #5 on shifter shaft #18, first remove spring pin #59, then slide handle assembly #5 from shifter shaft #18. O-ring #53 can be replaced at this time.

To replace shifter detent bracket #23, first remove (2) ¼ x 20 capscrews #26 and (2) ¼ lockwashers # 35, then remove shifter detent bracket #23 and replace.



7. Remove drum bushing assembly #25. Note that the (6) spring pins #62 are pressed into the bushing and cannot be removed. To replace the drum bushing, first press in the (6) spring pins #62, and then replace the bushing on the shaft. Drum seal #65 can also be replaced at this time if needed.

Note: Replacement bushings do not include the pins so you will need to order them separately.

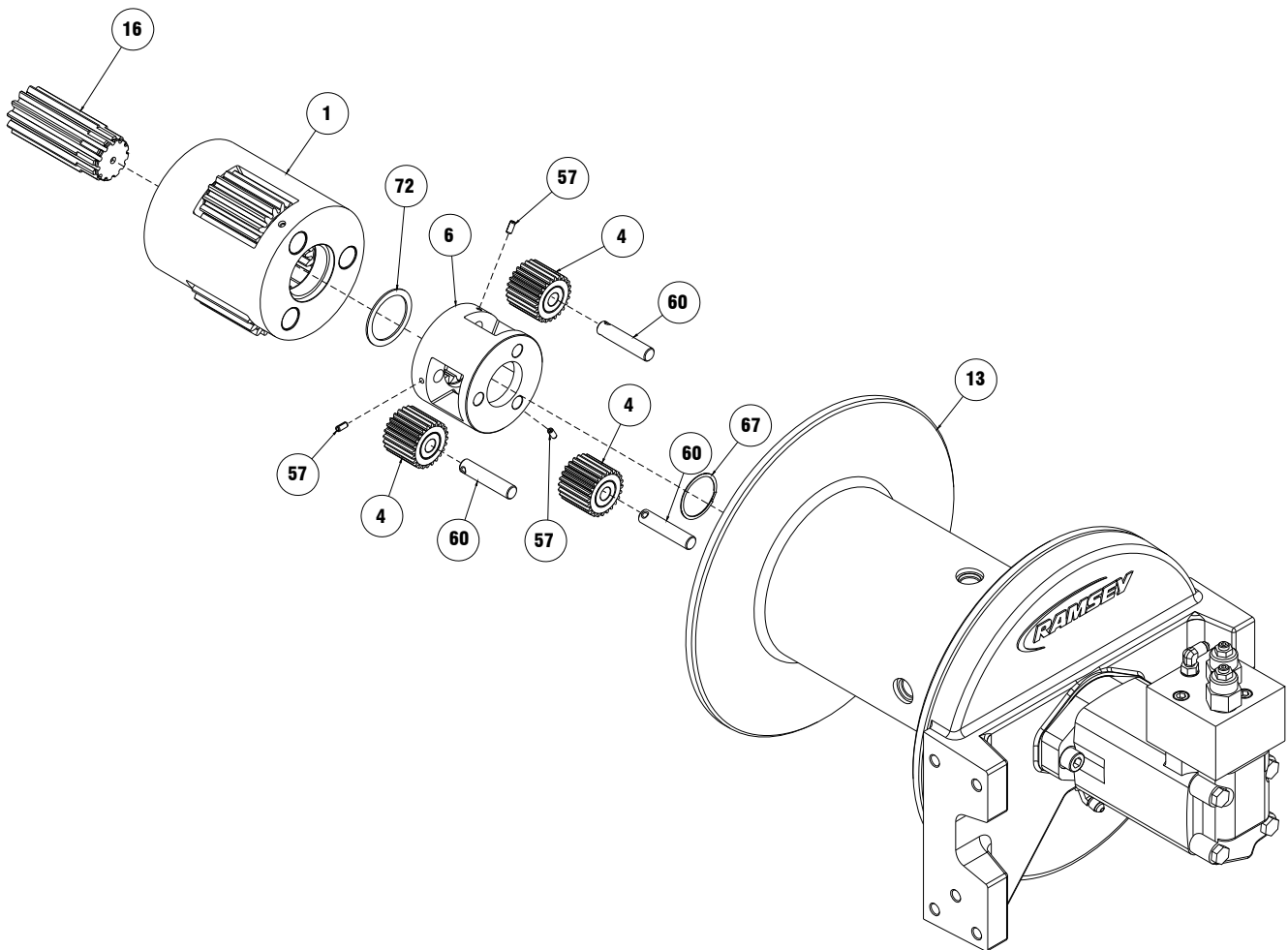


8. Remove output shaft #16, output carrier assembly #1, and input carrier assembly #6 from drum #13. Disassemble in the following order:

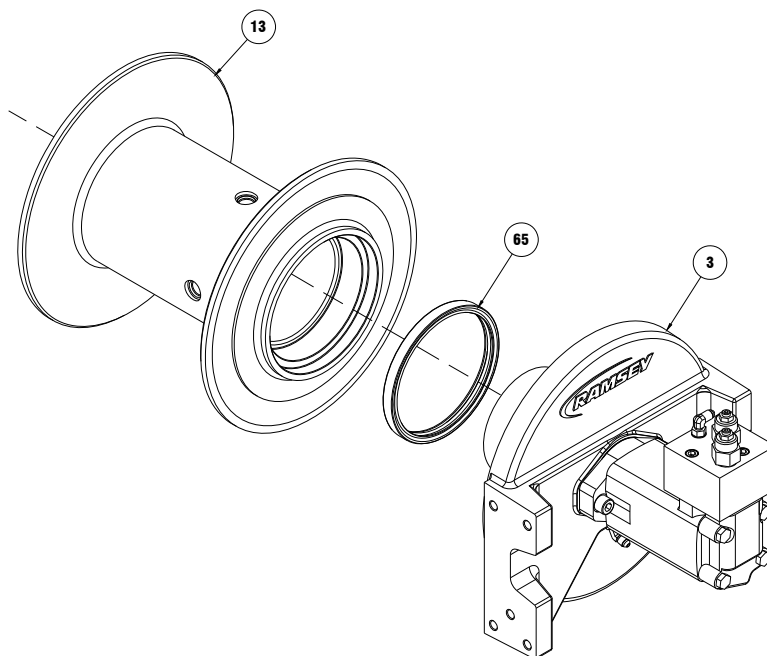
Knock (3) spring pins #57 inward to center of input carrier assembly #6. Remove (3) input planet pins #60 from input carrier assembly #6. Remove (3) input planet gears #4 from input carrier assembly #6.

Remove output shaft external retaining ring #67 from output shaft #16. Slide input carrier #6 from output shaft #16.

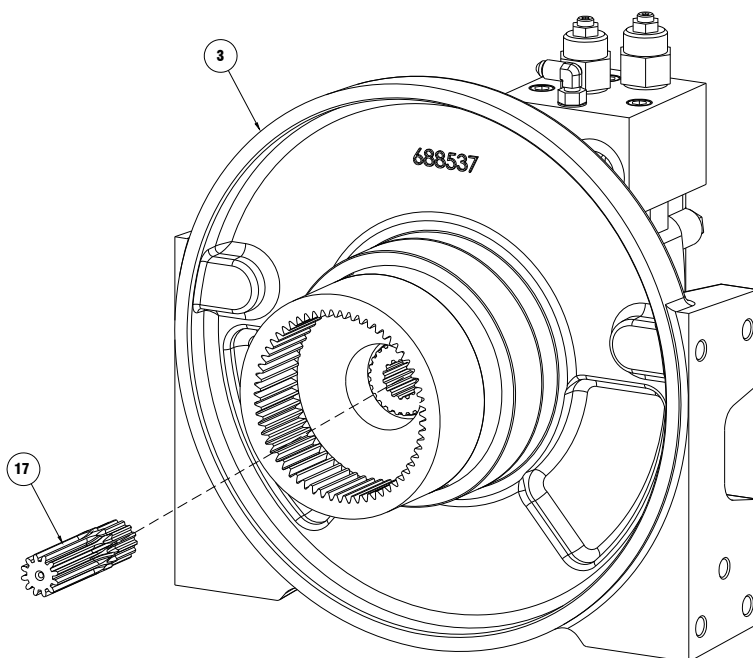
Remove thrust washer #72 from output shaft #16. Slide output carrier assembly #1 from output shaft #16. Output carrier assembly #1 must be purchased as an assembly. Replacement gears are not available.



9. Remove drum #13 from motor end bearing #3. Remove drum seal #65. Check for signs of wear and replace if necessary.



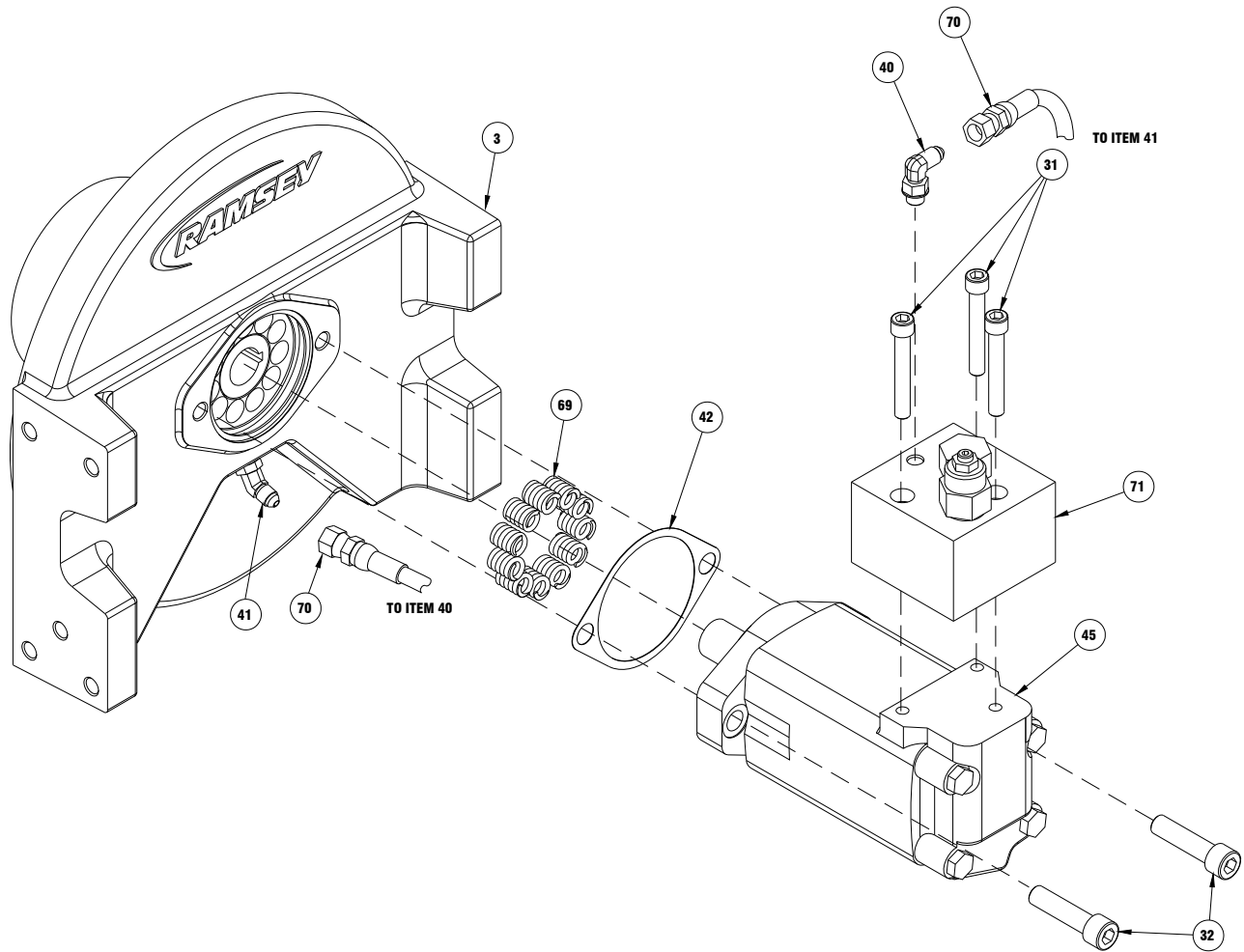
10. Remove input shaft #17 from motor end bearing #3.



11. To remove motor #45 from motor end bearing #3, first detach hydraulic brake release hose assembly #70 from elbow fitting #40. Loosen (2) 1/2-13 capscrews #32. Remove motor gasket #42, and (11) brake springs #69.

To remove motor control valve #71, loosen (3) 3/8-16 NC capscrews #31, lift motor control valve #71 from motor #45.

Note: Do not run winch with hydraulic brake release hose assembly disconnected.



TORQUE CHART

GRADE 5

SIZE	TORQUE VALUE
1/4-20	76 IN LBS
3/4-16	223 FT LBS
3/8-16	23 FT LBS
1/2-13	57 FT LBS

GRADE 8

SIZE	TORQUE VALUE
1/2-13	80 FT LBS
5/8-11	159 FT LBS

12. Remove (2) retaining rings #66. Remove motor coupling #39 from end bearing #3. Remove roll pin #56 from motor coupling #39. Remove brake piston #10 and backup brake piston #11.

Remove o-ring #47, o-ring #46, backup ring #49, and backup ring #51 from brake piston #10.

Remove o-ring #48 and backup ring #50 from backup brake piston #11. Remove (7) stators #8 and (6) brake discs #9 from end bearing #3.

To re-install brake, set gear housing end down on work surface.

Install well-oiled o-rings and backup rings into grooves on outside of brake piston and backup brake piston as shown in cross-section A-A below.

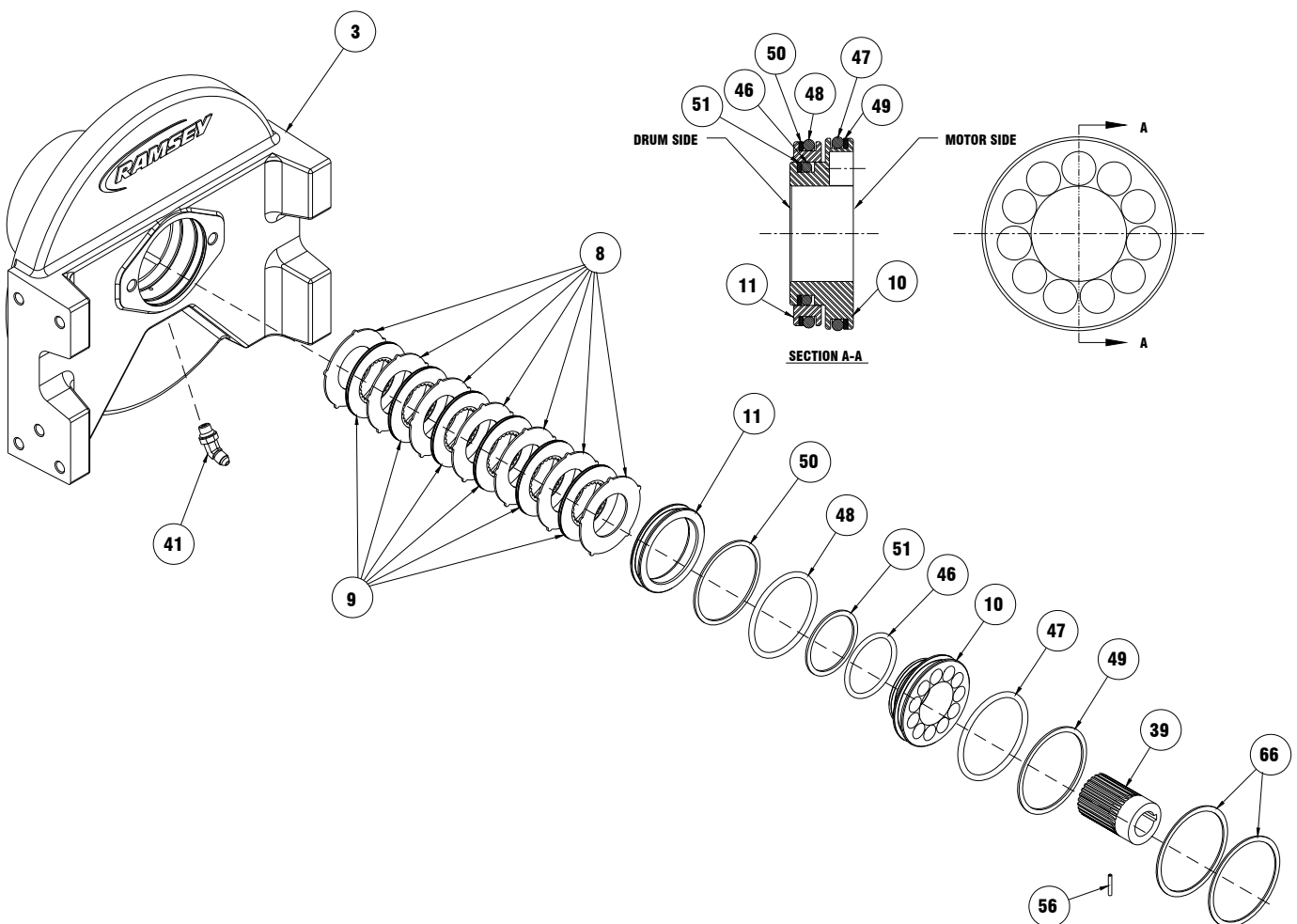
Piston, backup piston, brake discs and stators must be clean and well lubed with 75W-90 Synthetic Gear Oil.

Insert (7) stators #8 and (6) brake discs #9 into gear end alternating, with stators first and last.

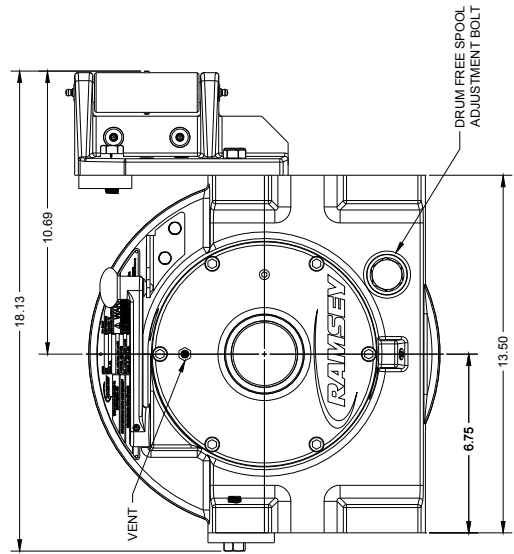
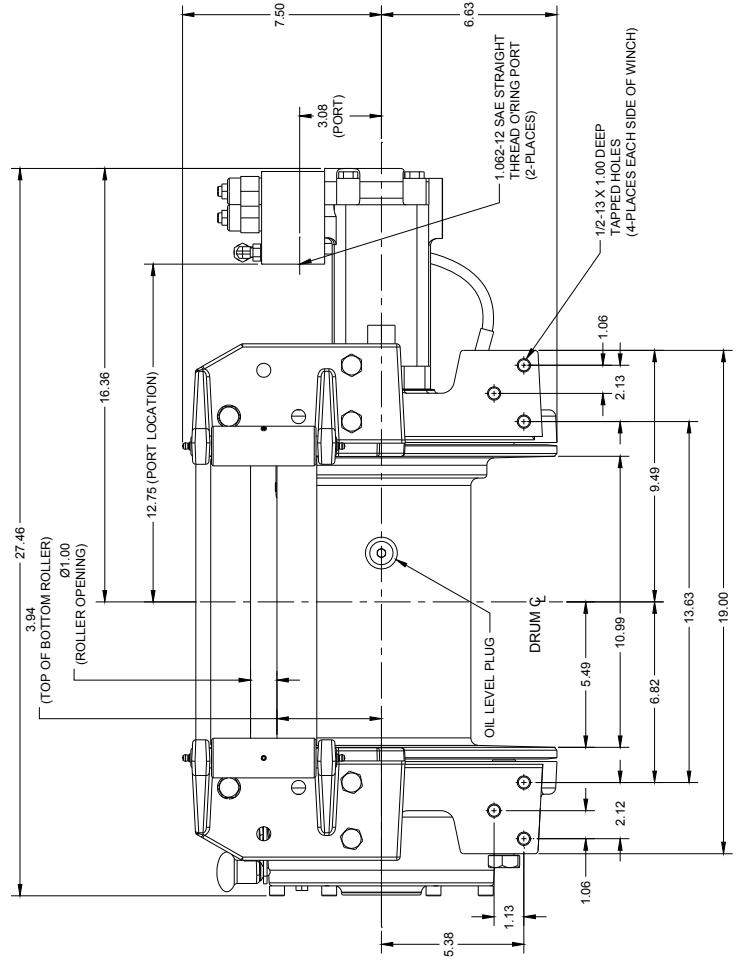
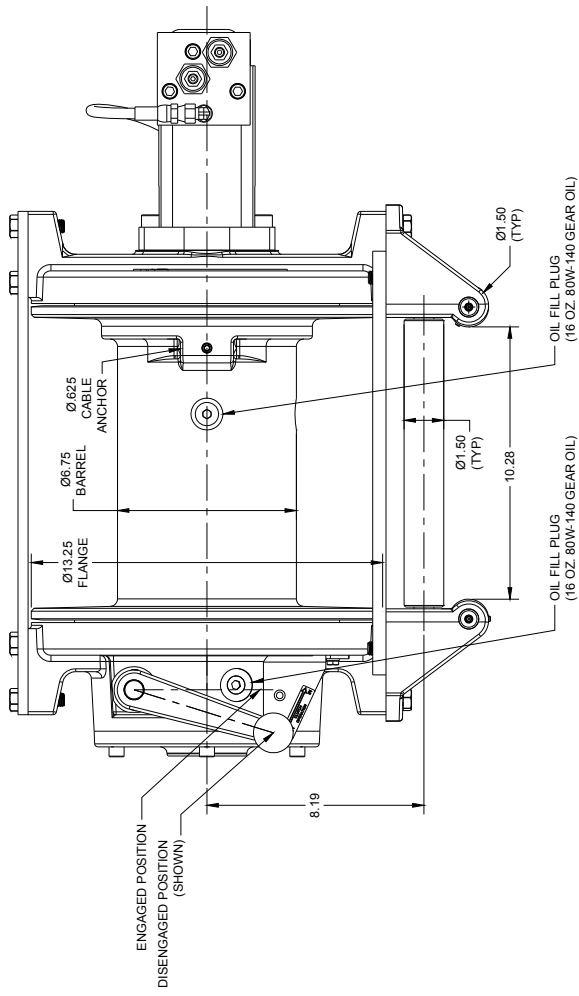
Insert backup brake piston #11 on to brake piston #10. Insert brake piston assembly into motor end bearing #3. Apply even pressure on piston when installing.

Insert roll pin #56 into motor coupling #39 below bottom of spline teeth. Insert motor coupling #39 into end bearing #3.

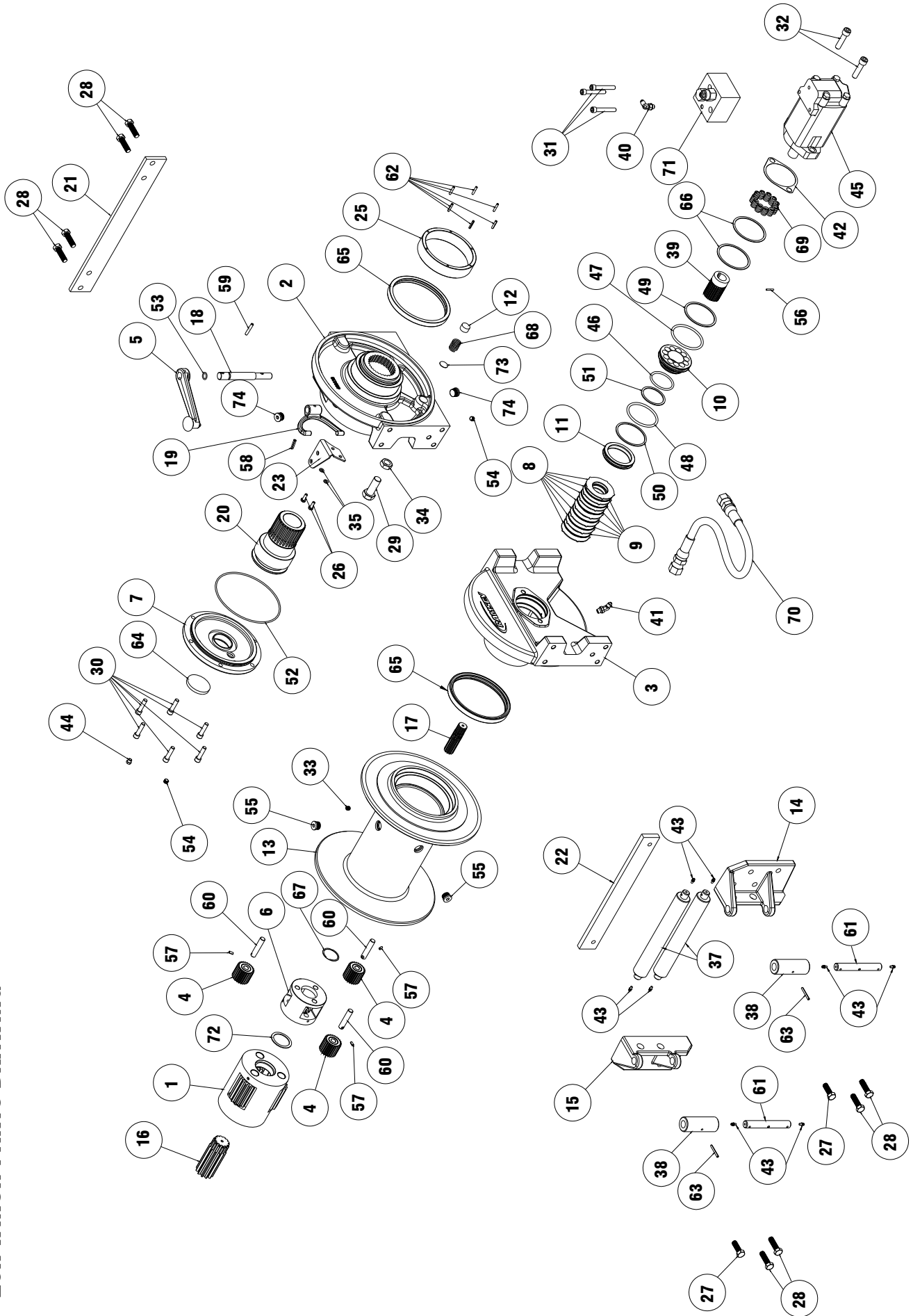
Install (2) retaining rings #66 into grooves in motor end housing.



20K DIMENSIONAL DRAWING



20K WINCH PARTS DRAWING

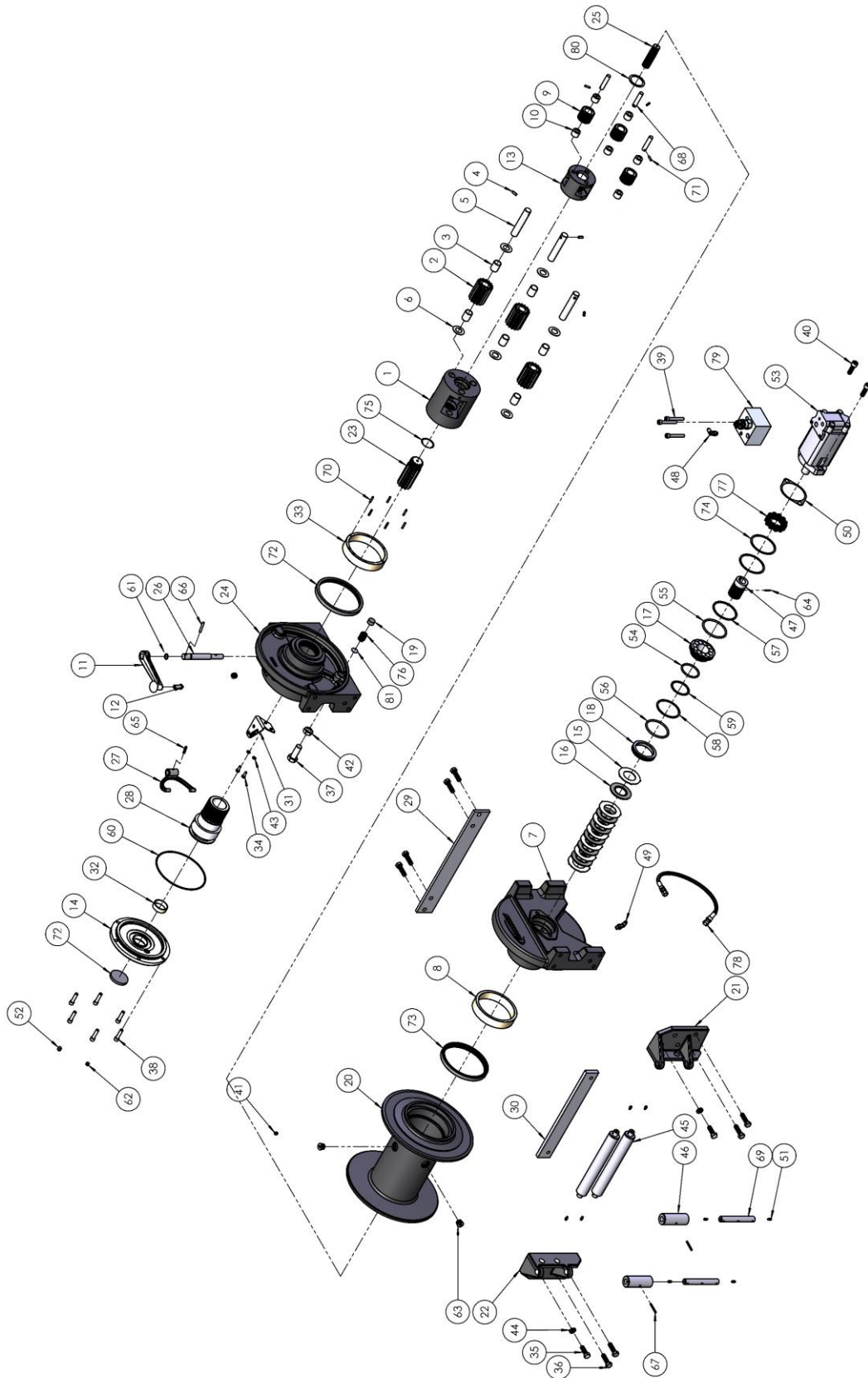


PARTS LIST – 20K WINCH

ITEM	QTY.	PART NO	DESCRIPTION	ITEM	QTY.	PART NO	DESCRIPTION
1	1	247040	OUTPUT CARRIER	39	1	431023	COUPLING-MOTOR
2	1	296673	CLUTCH END BEARING	40	1	432018	FITTING-90° ELBOW, -4 SAE ORING TO -4 JIC
3	1	296674	MOTOR END BEARING	41	1	432044	FITTING-45° ELBOW, -4 SAE ORING TO -4 JIC
4	1	296675	INPUT PLANET GEAR ASSEMBLY	42	1	442223	GASKET-MOTOR
5	1	296682	SHIFT LEVER ASSEMBLY	43	8	456001	LUBE FITTING
6	1	317015	CARRIER-INPUT	44	1	456008	RELIEF FITTING ZP
7	1	328166	COVER-CLUTCH HOUSING	45	1	458144	HYD MOTOR 14.9 CU IN
8	7	330011	STATOR-BRAKE	46	1	462067	O-RING-2.225 ID X .210 THK, 2-331
9	6	330012	DISC-BRAKE FRICTION	47	1	462068	O-RING-3.10 ID X .210 THK, 2-338
10	1	330013	PISTON-BRAKE	48	1	462069	O-RING-2.975 ID X .210 THK, 2-337
11	1	330014	PISTON-BACKUP BRAKE	49	1	462070	RING-BACKUP, 3.143 ID X .076 THK, 8-338
12	1	330015	PUCK-DRAG, DRUM FREESPOOL	50	1	462071	RING-BACKUP, 3.018 ID X .076 THK, 8-337
13	1	332231	DRUM-MACHINED	51	1	462072	RING-BACKUP, 2.268 ID X .076 THK, 8-331
14	1	333026	ROLLER GUIDE-RH SIDE	52	1	462077	O-RING-6.984 ID X .139 THK, 2-262, CLUTCH HSG CVR
15	1	333027	ROLLER GUIDE-LH	53	1	462078	O-RING-.549 ID X .103 THK, 2-113, SHIFTER SHAFT
16	1	334207	OUTPUT SUN GEAR	54	2	468016	PLUG-PIPE 1/8-27NPTF SOC HD
17	1	355139	SHAFT-INPUT	55	2	468041	PLUG, -8 SAE, 3/4"-16 UNF
18	1	355141	SHAFT-SHIFTER	56	1	470033	SPIROL PIN
19	1	370061	YOKE-SHIFTER	57	3	470060	SPRING PIN-3/16 X 1/2 LG
20	1	370065	CLUTCH-YOKE	58	1	470103	PIN-SPRING, .25 DIA X 1.0 LG
21	1	395428	TIE PLATE	59	1	470104	PIN-SPRING, .25 DIA X 1.5 LG
22	1	395429	ROLLER GUIDE TIE PLATE	60	3	470107	PIN-INPUT PLANET
23	1	408364	BRACKET-SHIFTER DETENT	61	2	470109	VERTICAL ROLLER PIN
25	1	412132	BUSHING- DRUM	62	6	470123	PIN-SPRING, .188 DIA X 1.00 LG
26	2	414038	CAPSCREW-1/4-20NC X .75 LG HX HD GR5 Z/P	63	2	470128	PIN-SPRING .188 DIA X 1.5 LG
27	2	414512	CAPSCREW 1/2-13X1.5 LG HX HD GR 8 ZP	64	1	472081	PLUG, GEAR HOUSING COVER
28	8	414515	CAPSCREW 1/2-13X1.75 LG HX HD GR 8 ZP	65	2	486093	SEAL-DRUM
29	1	414772	CAPSCREW-3/4-16 X 2.0 LG HX HD GR5	66	2	490049	RING-INTERNAL RETAINING, S.MALLEE #WH-350
30	6	414906	CAPSCREW-3/8-16 X 1.5 LG SOC HD F/B	67	1	490061	RING-EXTERNAL RETAINING, S.MALLEE #WWSM-150, OUTPUT SHAFT
31	3	414935	CAPSCREW-3/8-16NC X 2.5 LG SOC HD	68	1	494002	SPRING-DRUM FREESPOOL
32	2	414945	CAPSCREW 1/2-13 X 1.5 LG SOC HD ZP, NY-LOK	69	11	494124	SPRING-BRAKE
33	1	416057	SETScrew -3/8-16NCX3/8LG,HX SOCHD CU	70	1	509142	HOSE ASSY- PORTS UP
34	1	418098	NUT-3/4-16NF HEX JAM	71	1	516011	VALVE-MOTOR CONTROL
35	2	418149	LOCKWASHER-1/4 MED SECTION ZP	72	1	518071	THRUST WASHER
37	2	424033	ROLLER-HORIZONTAL	73	1	530094	SPACER-BRAKE DISC
38	2	424034	ROLLER-VERTICAL	74	2	468018	PLUG - 3/8-18 HX SOC

RAMSEY HYDRAULIC PLANETARY WINCH MODEL 20K

123602



RAMSEY HYDRAULIC PLANETARY WINCH MODEL 20K

123602

Item#	QTY.	MATERIAL PART	DESCRIPTION	KITS						
				207022	207023	207027	222084	246080	248068	283095
1	1	317016	CARRIER-OUTPUT							
2	3	334208	GEAR-OUTPUT PLANET							
3	6	412134	BEARING-OUTPUT PLANET							
4	3	470086	ROLL PIN-1/4 X 11/16LG							
5	3	470122	PIN-OUTPUT PLANET							
6	6	518072	WASHER-THRUST							
7	1	338382	END BEARING-MOTOR							
8	1	412122	BUSHING-DRUM						X	
9	1	334823	GEAR-INPUT PLANET							
10	2	412113	BUSHING-INPUT CARRIER GEAR							
11	1	370059	LEVER-SHIFT				X			
12	1	530166	DETENT-SHIFT LEVER				X			
13	1	317015	CARRIER-INPUT							
14	1	328166	COVER-CLUTCH HOUSING							
15	7	330011	STATOR-BRAKE		X					
16	6	330012	DISC-BRAKE		X					
17	1	330013	PISTON-BRAKE			X				
18	1	330014	PISTON-BACKUP BRAKE							
19	1	330015	PUCK-DRUM DRAG	X						
20	1	332231	DRUM							
21	1	333026	ROLLER GUIDE-RH							
22	1	333027	ROLLER GUIDE-LH							
23	1	334207	GEAR-OUTPUT SUN							
24	1	338373	END BEARING-CLUTCH							
25	1	355139	SHAFT-INPUT			X				
26	1	355141	SHAFT-SHIFTER				X			
27	1	370061	YOKE-SHIFTER				X			
28	1	370065	YOKE-CLUTCH				X			
29	1	395428	PLATE-TIE							
30	1	395429	PLATE-TIE, ROLLER GUIDE							
31	1	408364	BRACKET-SHIFTER DETENT				X			
32	1	412115	BUSHING-CLUTCH HOUSING COVER							
33	1	412132	BUSHING-DRUM, CLUTCH SIDE						X	
34	2	414038	CAPSCREW-1/4-20NCX3/4,HXHD,GR-5				X			
35	2	414512	CAPSCREW-1/2-13 X 1.5 LG HX HD GR8							
36	8	414515	CAPSCREW-1/2-13 X 1.75 LG HX HD GR8							
37	1	414772	CAPSCREW-3/4-16NFX2LG HXHD GRADE 5	X						
38	6	414906	CAPSCREW-3/8-16NCX1 1/2LG,SOCHD							
39	3	414935	CAPSCREW-3/8-16NCX2 1/2,HXSOCHD							
40	2	414952	CAPSCREW-1/2-13NCX1 1/2LG,SOCHD							
41	1	416057	SETScrew-3/8-16NCX3/8LG,HX SOCHD CU							

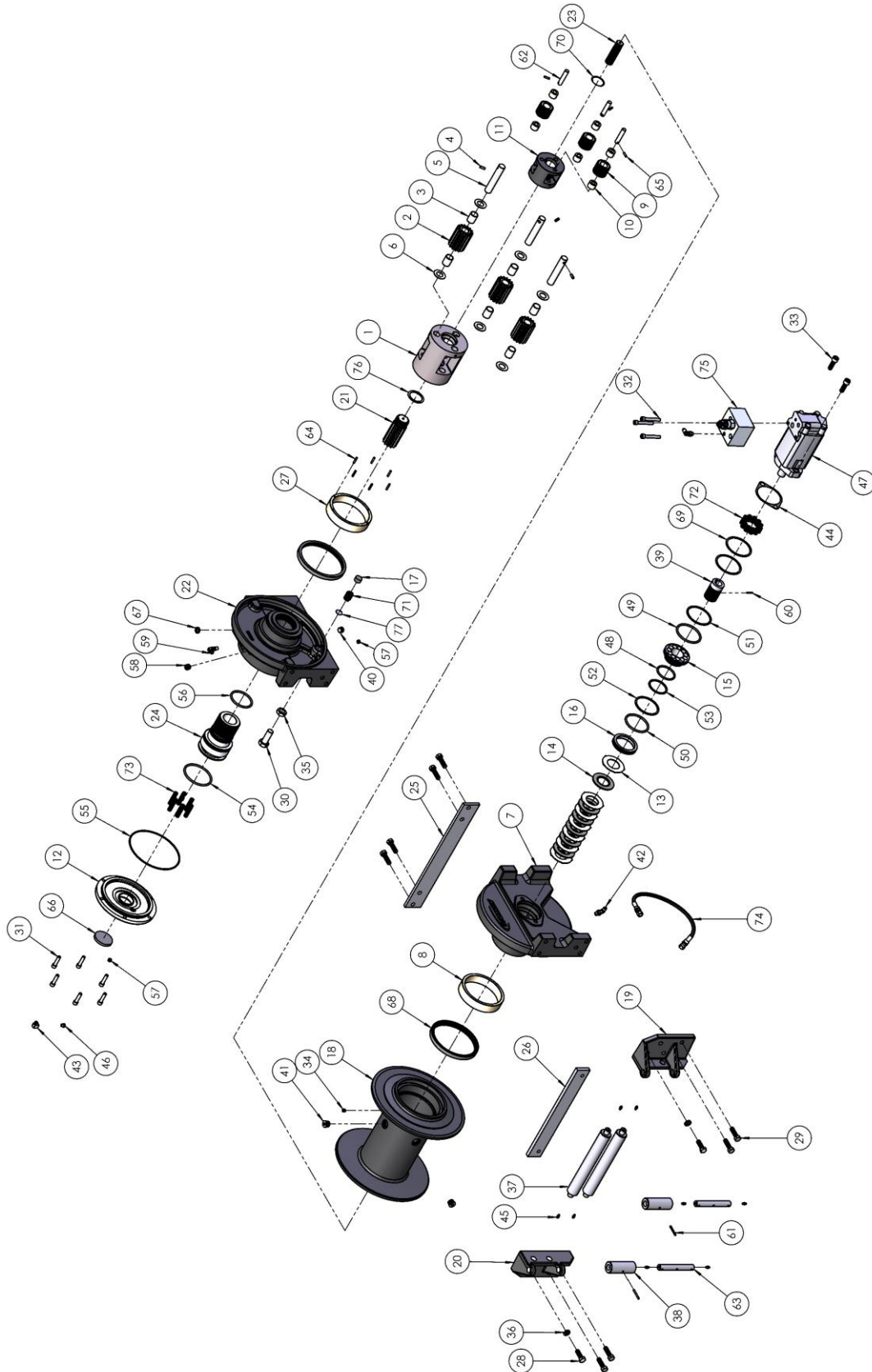
RAMSEY HYDRAULIC PLANETARY WINCH MODEL 20K

123602

Item#	QTY.	MATERIAL PART	DESCRIPTION	KITS						
				207022	207023	207027	222084	246080	248068	283095
42	1	418098	NUT-3/4-16NF HEX JAM	X						
43	2	418149	LOCKWASHER-1/4 MED SECTION				X			
44	2	418218	LOCKWASHER-1/2 ID MED SECT							
45	2	424033	ROLLER-HORIZONTAL							
46	2	424034	ROLLER-VERTICAL							
47	1	431023	COUPLING-MOTOR			X				X
48	1	432018	FITTING, 7/16-20 90 degree							
49	1	432044	FITTING-45 DEG ELBOW							
50	1	442223	GASKET-MOTOR FLANGE					X		X
51	8	456001	FITTING-LUBE, 3/16 DRIVE FIT							
52	1	456008	RELIEF FIT-1/8-27PPT							
53	1	458144	MOTOR-HYDRAULIC, 14.9 CU.IN.							
54	1	462067	O-RING-2.225 ID X .210 THK		X			X		
55	1	462068	O-RING-3.10 ID X .210 THK		X			X		
56	1	462069	O-RING-2.975 ID X .210 THK					X		
57	1	462070	RING-BACKUP, 3.143 ID X .076 THK		X			X		
58	1	462071	RING-BACKUP, 3.018 ID X .076 THK					X		
59	1	462072	RING-BACKUP, 2.268 ID X .076 THK		X			X		
60	1	462077	O-RING-6.984 ID X .139 DIA					X		
61	1	462078	O-RING-.549 ID X .103 DIA				X	X		
62	1	468016	PIPE PLUG-1/8-27NPTF,HEX SOC. HD							
63	2	468041	PLUG-3/4-16 (-8 SAE) WITH O-RING, SOC HD							
64	1	470033	SPIROL PIN-1/8X7/8			X				X
65	1	470103	PIN-SPRING, 1/4 X 1.0 LG				X			
66	1	470104	PIN-SPRING, 1/4 X 1.5 LG				X			
67	2	470105	PIN-SPRING, 3/16 X 1.625 LG							
68	3	470107	PIN-INPUT PLANET CARRIER							
69	2	470109	PIN-VERTICAL ROLLER							
70	6	470123	ROLL PIN 3/16"DIA. X 1.00 LG							
71	3	470163	PIN-SPRING, 3/16 X 3/4L							
72	1	472081	PLUG-GEAR HOUSING COVER							
73	2	486093	SEAL-DRUM					X		
74	2	490049	RING-INTERNAL RETAINING		X					
75	1	490061	RETAINING RING							
76	1	494002	SPRING	X						
77	11	494124	SPRING-BRAKE		X					
78	1	509142	ASSEMBLY-HOSE, HYDRAULIC BRAKE RELEASE							
79	1	516011	VALVE-MTR CONTROL							
80	1	518071	WASHER-THRUST						X	
81	1	530094	SPACER-BRK DISC,20GAX7/8 D	X						

RAMSEY HYDRAULIC PLANETARY WINCH MODEL 20K

123601



RAMSEY HYDRAULIC PLANETARY WINCH MODEL 20K

123601

Item#	QTY.	PART NUMBER	DESCRIPTION	KITS						
				207022	207023	207027	222081	246079	248068	283095
1	1	317016	CARRIER-OUTPUT							
2	3	334208	GEAR-OUTPUT PLANET							
3	6	412134	BEARING-OUTPUT PLANET							
4	3	470086	ROLL PIN-1/4 X 11/16LG							
5	3	470122	PIN-OUTPUT PLANET							
6	6	518072	WASHER-THRUST							
7	1	338382	END BEARING-MOTOR							
8	1	412122	BUSHING-DRUM						X	
9	1	334823	GEAR-INPUT PLANET							
10	2	412113	BUSHING-INPUT CARRIER GEAR							
11	1	317015	CARRIER-INPUT							
12	1	328166	COVER-CLUTCH HOUSING							
13	7	330011	STATOR-BRAKE		X					
14	6	330012	DISC-BRAKE		X					
15	1	330013	PISTON-BRAKE			X				
16	1	330014	PISTON-BACKUP BRAKE							
17	1	330015	PUCK-DRUM DRAG	X						
18	1	332231	DRUM							
19	1	333026	ROLLER GUIDE-RH							
20	1	333027	ROLLER GUIDE-LH							
21	1	334207	GEAR-OUTPUT SUN							
22	1	338373	END BEARING-CLUTCH							
23	1	355139	SHAFT-INPUT			X				
24	1	370060	YOKE-CLUTCH				X			
25	1	395428	PLATE-TIE							
26	1	395429	PLATE-TIE, ROLLER GUIDE							
27	1	412132	BUSHING						X	
28	2	414512	CAPSCREW-1/2-13 X 1.5 LG HX HD GR8							
29	8	414515	CAPSCREW-1/2-13 X 1.75 LG HX HD GR8							
30	1	414772	CAPSCREW-3/4-16NFX2LG HXHD GRADE 5	X						
31	6	414906	CAPSCREW-3/8-16NCX1 1/2LG,SOCHD							
32	3	414935	CAPSCREW-3/8-16NCX2 1/2,HXSOCHD							
33	2	414952	CAPSCREW-1/2-13NCX1 1/2LG,SOCHD							
34	1	416057	SETSCREW-3/8-16NCX3/8LG,HX SOCHD							
35	1	418098	NUT-3/4-16NF HEX JAM	X						
36	2	418218	LOCKWASHER-1/2 ID MED SECT							
37	2	424033	ROLLER-HORIZONTAL							
38	2	424034	ROLLER-VERTICAL							
39	1	431023	COUPLING-MOTOR			X				X
40	1	432018	FITTING, 7/16-20 90 degree							

RAMSEY HYDRAULIC PLANETARY WINCH MODEL 20K

123601

Item#	QTY.	PART NUMBER	DESCRIPTION	KITS						
				207022	207023	207027	222081	246079	248068	283095
41	1	432041	FITTING-AIR							
42	1	432044	FITTING-45 DEG ELBOW							
43	1	432067	ADAPTER-ELBOW, 90 DEGREE							
44	1	442223	GASKET					X		X
45	8	456001	FITTING-LUBE, 3/16 DRIVE FIT							
46	1	456038	FITTING-VENT							
47	1	458144	MOTOR-HYDRAULIC, 14.9 CU.IN							
48	1	462067	O-RING-2.225 ID X .210 THK		X			X		
49	1	462068	O-RING-3.10 ID X .210 THK		X			X		
50	1	462069	O-RING-2.975 ID X .210 THK				X	X		
51	1	462070	RING-BACKUP, 3.143 ID X .076 THK		X			X		
52	1	462071	RING-BACKUP, 3.018 ID X .076 THK					X		
53	1	462072	RING-BACKUP, 2.268 ID X .076 THK		X			X		
54	1	462076	O-RING-3.60 ID X .210 DIA				X	X		
55	1	462077	O-RING-6.984 ID X .139 DIA				X	X		
56	1	462098	O-RING-3/16X2.75X3.12OD					X		
57	2	468016	PIPE PLUG-1/8-27NPTF,HEX SOC. HD.							
58	2	468018	PIPE PLUG-3/8-18NPTF HXSOCHD							
59	2	468041	PLUG-3/4-16 (-8 SAE) WITH O-RING, SOC HD							
60	1	470033	SPIROL PIN-1/8X7/8			X				X
61	2	470105	PIN-SPRING, 3/16 X 1.625 LG							
62	3	470107	PIN-INPUT PLANET CARRIER							
63	2	470109	PIN-VERTICAL ROLLER							
64	6	470123	ROLL PIN 3/16"DIA. X 1.00 LG							
65	3	470163	PIN-SPRING, 3/16 X 3/4L							
66	1	472081	PLUG-GEAR HOUSING COVER							
67	1	472083	PLUG-SHIFTER SHAFT							
68	2	486093	SEAL-DRUM					X		
69	2	490049	RING-INTERNAL RETAINING		X					
70	1	490061	RETAINING RING							
71	1	494002	SPRING	X						
72	11	494124	SPRING-BRAKE		X					
73	6	494126	SPRING- LEE SPRING				X			
74	1	509142	ASSEMBLY-HOSE, HYDRAULIC BRAKE RELEASE							
75	1	516011	VALVE-MTR CONTROL							
76	1	518071	WASHER-THRUST						X	
77	1	530094	SPACER-BRK DISC,20GAX7/8 D	X						

**RAMSEY WINCH INDUSTRIAL WINCH
LIMITED WARRANTY**

1.1 Scope of Warranty Coverage. Upon the terms and subject to the conditions set forth in this limited warranty:

- (a) RAMSEY WINCH (referred to herein as “**RAMSEY WINCH**” or the “**Manufacturer**”) warrants to each initial end user customer (a “**Purchaser**”) of a new industrial winch together with any accessories manufactured and sold directly from RAMSEY WINCH (the “**Product**”) that the Product shall be free from defects in material and workmanship, under normal working and service conditions, for a period of eighteen (18) months from the date the Product is shipped from RAMSEY WINCH. (the “**Warranty Term**”). A Purchaser shall be eligible for an additional eighteen (18) months of coverage in addition to the Warranty Term (also referred to as the “**Standard (+) PLUS benefit**”) only if the Purchaser (i) complies with Section 1.2(a) and (ii) registers the Product during the Warranty Term at myproduct.ramseywinch.com.
- (b) Notwithstanding the foregoing, this warranty does not cover components damaged by accident, abuse, misuse, neglect, untrained operators, collision, overloading, modification, disassembly, rework, misapplication, improper installation, lack of lubrication or maintenance, or improper service. This warranty does not cover the paint or material finish, rope (wire or synthetic), removal or reinstallation of the winch, or normal wear and tear and loss of functionality due to aging of the Product (which may include but is not limited to bearings, bushings, seals, O-rings, gaskets, brake material, motor brushes, electrical cables and more).

1.2 Eligibility of Warranty Coverage.

- (a) A Purchaser shall be eligible for warranty coverage under this Limited Warranty during the Warranty Term only if:
 - (i) Prior to placing a Product in service, and throughout use of the Product during the Warranty Term, the Purchaser provides (or causes to be provided) proper storage such that foreign objects (e.g. rain or debris) cannot enter any Product through entry ports which are normally closed during operation.; and
 - (ii) The Purchaser maintains, or causes to be maintained, the Product according to commercially reasonable standards and utilizes the Product for the purposes for which it was created; and
 - (iii) No repairs or alterations have been made by any party other than RAMSEY WINCH, including Purchaser, unless otherwise authorized in writing by RAMSEY WINCH.

1.3 Transferability of Warranty.

- (a) This warranty is transferable only from the Purchaser to the first subsequent transferee (the “**Transferee**”) of the Product from Purchaser upon (i) written notification to RAMSEY WINCH and (ii) registration of the transfer, both within 30 days of such Product transfer.
- (b) Upon satisfaction of transfer requirements set forth in Section 1.3(a), the Transferee shall succeed to all the rights and obligations of the Purchaser set forth in this Limited Warranty.

1.4 Certain Limitations on Scope of Warranty Service.

- (a) Any obligation of RAMSEY WINCH under this warranty, statutory or otherwise, is limited to the repair of the Product, at its factory or Authorized Service Centers. Notwithstanding the foregoing, if field service or repair is performed by RAMSEY WINCH at the request of the Purchaser and no defect is found with material or workmanship of the Product, the Purchaser shall compensate RAMSEY WINCH for its time and expenses within thirty (30) days of delivery of an invoice relating to the same. If repair is determined by RAMSEY WINCH in its sole, absolute and uncontrolled discretion to be impossible or impractical, then RAMSEY WINCH may satisfy this warranty by replacing the Product. RAMSEY WINCH will not provide any cash payment or credits for defective materials or workmanship.

- (b) Purchaser shall be responsible for any and all freight charges for any Product receiving warranty service under this limited warranty. Any travel time, transportation charges, freight charges, or similar costs incurred by RAMSEY WINCH in connection with the replacement or repair of defective parts, shall, be the responsibility of the Purchaser. If applicable, RAMSEY WINCH shall invoice Purchaser for the total amount of such charges within sixty (60) days of fulfilling its duties under this warranty, payable within thirty (30) days of delivery of such invoice. In no event shall RAMSEY WINCH be liable for bills for service, labor or other expenses that have been incurred by the Purchaser without approval or prior authorization by RAMSEY WINCH for inspection, maintenance, or repair of the Product.
- (c) If a Product is found to be operable upon inspection, the Product, at Purchaser's election, may be either (1) returned to the Purchaser with a service charge from RAMSEY WINCH for inspection, cleaning, and routine replacement of all rubber components and any other parts that show wear; or (2) RAMSEY WINCH can dispose of the product safely.

1.5 **Limitations of Liability.** RAMSEY WINCH shall in no event be liable for punitive, special or consequential damages relating to the Product or this Warranty. RAMSEY WINCH makes no warranty in respect to third-party accessories, upgrades, or additions to the Product.

1.6 **Improving Product.** RAMSEY WINCH reserves the right to improve the Product through changes in design or materials as it may deem desirable or necessary without being obligated to incorporate, upgrade, or otherwise modify previously manufactured products.

1.7 **Limitations of Warranty.**

- (a) THE WARRANTY SET FORTH ABOVE IS THE ONLY EXPRESS WARRANTY. RAMSEY WINCH HEREBY DISCLAIMS AND EXCLUDES ANY OTHER EXPRESS, IMPLIED, OR STATUTORY WARRANTIES, ARISING BY OPERATION OF LAW, COURSE OF DEALING, COURSE OF PERFORMANCE, USAGE, OF TRADE, OR OTHERWISE, INCLUDING, WITHOUT LIMITATION, ANY WARRANTIES OF MERCHANTABILITY, FITNESS FOR A PARTICULAR PURPOSE, AND INTELLECTUAL PROPERTY RIGHTS OF A THIRD PARTY.
- (b) ANY IMPLIED WARRANTY WHICH BY LAW MAY NOT BE EXCLUDED IS LIMITED IN DURATION TO ONE (1) YEAR FROM THE DATE OF ORIGINAL RETAIL PURCHASE OF THE PRODUCT.
- (c) This warranty gives you specific legal rights, and you may also have other rights which vary from jurisdiction to jurisdiction.
- (d) This warranty is valid only in the U.S.A. and Canada. For warranty outside the U.S.A. and Canada contact your nearest Ramsey Winch Distributor.

1.8 **No Modifications to Warranty.** No RAMSEY WINCH dealer, distributor, agent or employee is authorized to make any modification, extension or addition to this warranty.

1.9 **How to Apply for Warranty Coverage.**

All claims are handled by contacting your nearest Ramsey Winch Distributor. For questions, please contact customer support: rwcustomersupport@ramseyindustries.com.

Visit [Dealer Locator - Ramsey Winch](#) for Ramsey Winch Distributor locations and contact information.

Additional warranty, service support, product information, and parts information can be found on www.ramseywinch.com.

NOTES

NOTES

