



Ramsey Winch Company Owner's Manual Front Mount Electric Winch Model Quick Mount 9000/9500

QUICK MOUNT 9000						
Layer of Cable		1	2	3	4	5
Rated Line Pull Per Layer	(lbs)	9,000	7,300	6,200	5,400	4,700
	(kg)	4,070	3,300	2,800	2,440	2,130
Cumulative Cable Capacity Per Layer	(ft)*	15	35	60	90	105
	(5/16" - 8mm - dia. Cable) (m)*	4	10	18	27	32
Line Pull First Layer	(lbs)	NO LOAD	2,000	4,000	6,000	9,000
	(kg)		900	1,810	2,720	4,070
Line Speed First Layer	(FPM)					
	12V	29	15	11	9	7
	24V	29	16	13	10	8.5
	(MPM)					
	12V	8.8	4.6	3.3	2.7	2.1
	24V	8.8	4.9	4	3	2.6
Amp Draw	(12V)	90	190	245	315	400
	(24V)	45	95	128	165	205

Congratulations!

You have purchased the finest winch available in its service class. The Quick Mount™ is a detachable winch. It can be easily mounted to the front or rear of a vehicle for self recovery and other applications. It allows one winch to be used on multiple vehicles, and can be quickly installed and removed to avoid extra vehicle weight.

The Quick Mount™ comes with a remote control switch, anti-theft locking pin and a hawse fairlead. Front mount requires a front receiver mounting kit. Optional 5 ft., 20 ft. or 24 ft. battery cables for front or rear mounting are available.

The Quick Mount™ features a highly efficient 3 stage planetary gear set which transmits torque from a series wound D.C. motor. A positive clutch allows free spooling for quick cable deployment. An automatic load holding brake is designed to hold the full rated capacity of the winch. It was designed and manufactured to provide you with the utmost in utility. As with any device that combines power and movement in its use, there are dangers if improperly used. At the same time, there are easier and faster ways for getting the job done if certain precautions are taken first.

Please read this manual carefully. It contains useful ideas in obtaining the most efficient operation from your Ramsey Winch and safety procedures you need to know before beginning use.

When you follow our guidelines for operation, your Ramsey Winch will give you many years of satisfying service. Thank you for choosing Ramsey. You will be glad you have one working for you.

QUICK MOUNT 9500							
Layer of Cable		1	2	3	4	5	
Rated Line Pull Per Layer	(lbs)	9,500	7,700	6,500	5,700	4,900	
	(kg)	4,309	3,480	2,940	2,580	2,210	
Cumulative Cable Capacity Per Layer	(ft)*	15	34	58	86	100	
	(5/16" - 8mm - dia. Cable) (m)*	4	10	17.5	26	30.5	
Line Pull First Layer	(lbs)	NO LOAD	2,000	4,000	6,000	8,000	9,500
	(kg)		900	1,810	2,720	3,620	4,309
Line Speed First Layer	(FPM)						
	12V	34.5	16.7	12.7	10.6	9	7.8
	24V	29	16	13	10	9	8
	(MPM)						
	12V	10.7	5.1	3.8	3.2	2.7	2.3
	24V	8.8	4.9	4	3	2.7	2.4
AMP DRAW	12V	97	180	260	335	395	430
	24	45	95	128	165	192	212

Please Note: Ramsey Quick Mount™ series winches are designed for front and rear mount vehicle use. The winches are not designed for and should not be used in industrial applications (car haulers /carriers, wreckers, hoisting, etc.), and Ramsey does not warrant them to be suitable for such use. Ramsey makes a separate, complete line of winches for industrial/commercial use. Please contact the factory for additional information.



CAUTION: Read and understand this manual before installation and operation of winch. See Safety Precautions.

Table of Contents

Performance Specifications.....	Front Cover
Safety Precautions	1
Tips for Safe Operation.....	1
Techniques of Operation	2
Assembling Your Winch.....	3
Electrical Connections	4
Installation	4
Clutch Operation	4
Remote Control Operation	4
Maintenance	5
Cable Installation.....	5
Troubleshooting Guide.....	6
Winch Parts List.....	7-9
Warranty	Back Cover

Safety Precautions



Safety Precautions To Guard Against Possible Injury.....

A minimum of five wraps of cable around the drum barrel is necessary to hold the rated load. Cable clamp is not designed to hold the load.

- A. Secure Quick Mount™ locking pin into place before starting winching operation.
- B. Use only locking pin #448097.
- C. Front mount receiver is for use with the Quick Mount™ winch only. Do not use for towing.
- D. Keep yourself and others a safe distance to the side of the cable when pulling under load.
- E. Do not step over a cable, or near a cable under load. F. Use supplied hook strap when handling hook for spooling wire rope.
- G. Do not move the vehicle to pull a load on the winch cable. This could result in cable breakage and/or winch damage.
- H. Use a heavy rag or gloves to protect hands from burrs when handling winch cable.
- I. Apply blocks to wheels when vehicle is on an incline. J. Winch clutch should be disengaged when winch is not in use and fully engaged when in use.
- K. Modification, alteration, or deviation to the winch should only be made by Ramsey Winch Company.
- L. Keep the duration of your pulls as short as possible. If the motor becomes uncomfortably hot to the touch, stop and let it cool for a few minutes. Do not pull more than one minute at or near the rated load. Do not maintain power to the winch if the motor stalls. Electric winches are for intermittent usage and should not be used in constant duty applications.
- M. Disconnect the remote control switch from the winch when not in use. A Ramsey Part No. 282053 battery disconnect switch in your vehicle is recommended.
- N. Do Not use winch in hoisting applications due to required hoist safety factors and features.
- O. Do not exceed maximum line pull ratings shown in tables. Shock loads must not exceed these ratings.
- P. To respool correctly, it is necessary to keep a slight load on the cable. This is accomplished by (wearing gloves) holding the cable with one hand and the remote control with the other, starting as far back and in the center as you can, walking up keeping load on the cable as the winch is powered in.

Do not allow the cable to slip through your hand and do not approach the winch too closely. Turn off the winch and repeat the procedure until all the cable except a few feet is in. Disconnect the remote control switch and finish spooling in cable by rotating the drum by hand with clutch disengaged.



Tips for Safe Operation

Do not underestimate the potential danger in winching operations. Neither should you fear them. Do learn the basic dangers and avoid them.

Observe spooling of cable onto drum. Side pulls can cause cable to pile up at one end of the drum. To correct uneven stacking, spool out that section of the cable and move it to the other end of the drum and continue winching. Uneven spooling which causes cable pileup can interfere with the solenoid housing causing damage to the winch.

Store the remote control switch inside your vehicle where it will not become damaged. Inspect it before you plug it in.

When ready to begin spooling in, plug in remote control switch with clutch disengaged. Do not engage clutch with motor running.

Never connect the hook back to the cable. This causes cable damage. Always use a sling or chain of suitable strength as shown in the illustration, page 3.

Observe your winch while winching, if possible, while standing at a safe distance. If you use vehicle drive to assist, stop and get out every few feet to assure the cable is not piling up in one corner. Jamming cable can break your winch.

Do not attach tow hooks to winch mounting apparatus. They must attach to vehicle frame.

When double lining during stationary winching, the winch hook should be attached to the chassis of the vehicle.

Since the greatest pulling power is achieved on the innermost layer of your winch, it is desirable to pull off as much line as you can for heavy pulls. If this is not practical, use a snatch block and double line arrangement as shown in the illustration, page 3. Remember, a minimum of 5 wraps of cable around the drum barrel is necessary to hold the rated load.

Techniques of Operations

Neat, tight spooling avoids cable binding. Cable binding occurs when a cable under load pulls down into the layer below, becoming pinched between two other wraps of cable. If this happens, alternately power the winch in and out a few inches. Do not attempt to work a bound cable under load; free by hand.

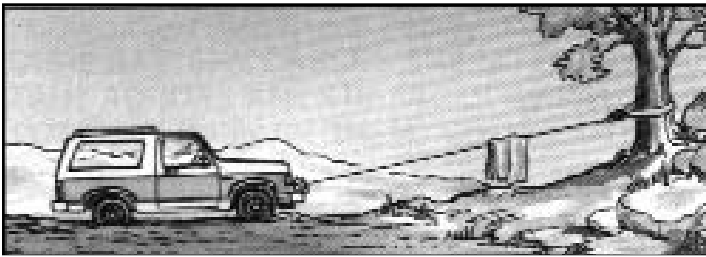
Techniques of Operation

The best way to get acquainted with how your winch operates is to make a few test runs before you actually need to use it. Plan your test in advance. Remember you hear your winch as well as see it operate. Get to recognize the sound of a light steady pull, a heavy pull, and sounds caused by load jerking or shifting. Soon you will gain confidence in operating your winch and its use will become second nature with you.

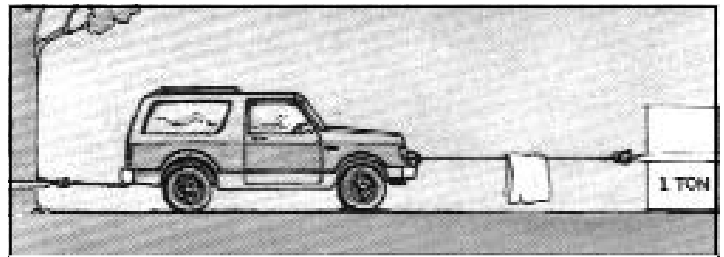
When pulling a heavy load, place a blanket, jacket or tarpaulin over the cable five or six feet from the hook. It will slow the snap back in the event of a broken cable. Also, open the vehicle hood for additional protection.

Use the vehicle wheel power to help the winch, but do not overtake the winch line. Plan your pull. You can not always hook up and pull out in one step. Examine the area for anchoring possibilities as well as leverage situations, direction, and goal.

Your winch will not only pull you up or ease you down a steep grade, it will also pull another vehicle or a load while your vehicle is anchored in a stationary position. The following illustrations show a few basic winching techniques.



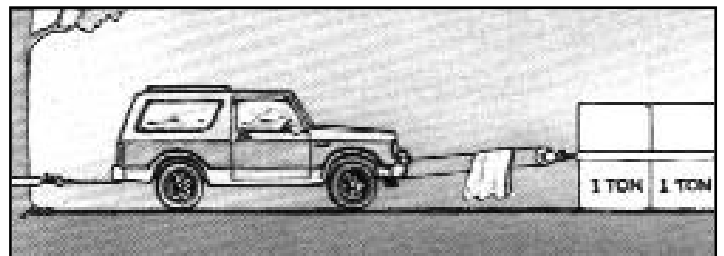
For basic self recovery, anchor to a tree or heavy rock. When anchoring to a tree, always use a tree trunk protector.



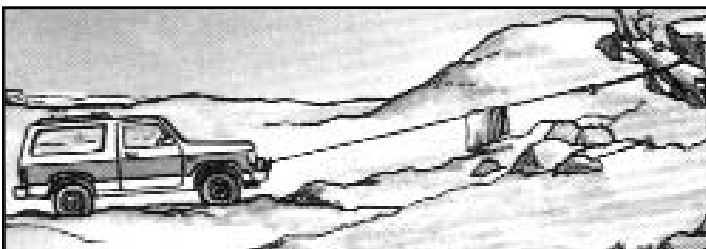
For a direct pull of 2,000 lbs., hitch truck to a tree or solid anchor, and take out of gear.



Stakes driven in solid earth and chained together make a good anchor point for self-recovery when no solid anchor point is available.



To double the pull, use 2-part line with snatch block and tie off to chassis. Take out of gear.



For a solid anchor, bury a log with earth or sand or place it in a deep ravine



Use for loading and unloading boats, trailers, race cars, etc.

Winch Assembly

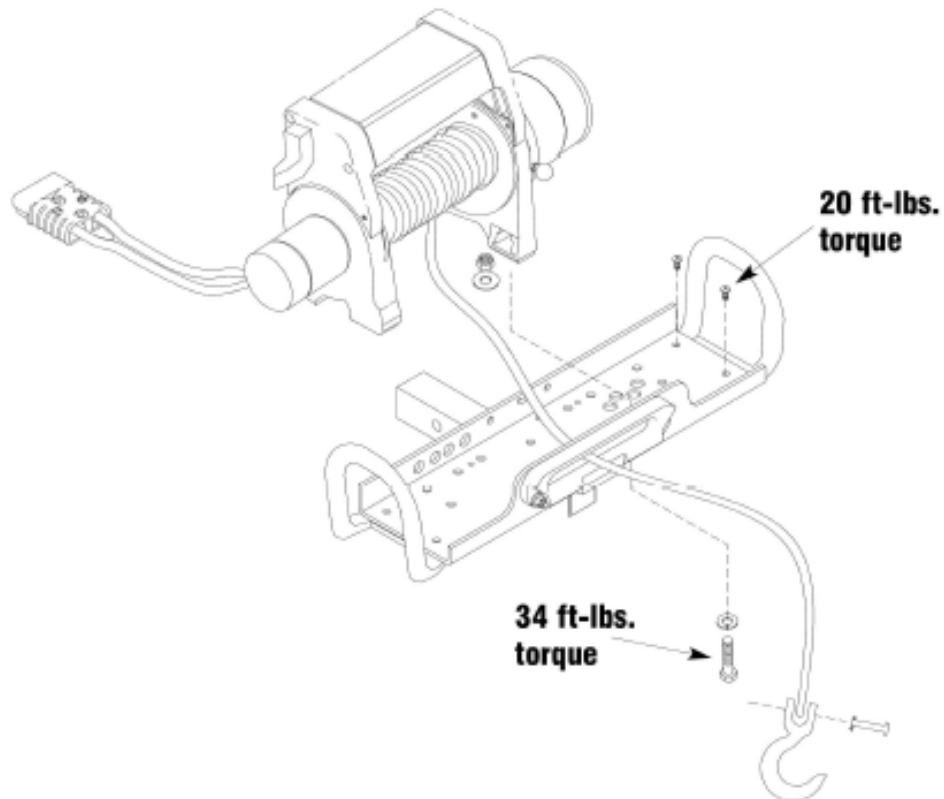
Assembling Your Winch

To assemble the QUICK MOUNT attach the handles to both ends of the quick mount channel using (2) black 3/8" button head screws for each handle. Tighten to 20 ft-lbs. torque.

Once the handles are attached, lift the winch into the quick mount channel. Feed the looped end of the pre-wrapped cable through the fairlead.

Place a 3/8" nut and flatwasher in each of the feet. Align the four mounting holes in the quick mount channel with the feet of the winch. Place a lockwasher on each 3/8" hex head screw and then press a screw through each mounting hole and start it through a nut. Do not tighten until all of the screws have been started. Tighten to 34 ft-lbs. torque.

Align the base of the clevis hook with the loop on the end of the cable. Run the pin through the clevis hook and the loop. Push the cotter pin through the hole in the pin and bend the cotter pin to lock.



ELECTRICAL / CLUTCH / REMOTE CONTROL OPERATING INSTRUCTIONS

Electrical Connections

For normal self recovery work, your vehicle's existing electrical system is adequate. Your battery must be kept in good condition. A fully charged battery and proper connections are essential.

A Quick Connect battery lead, sold separately, is required. Ramsey makes three lengths of Quick Connect leads:

Part No.	Description
251053	5 ft. (1.5 m) Battery Lead
251021	20 ft. (6.1 m) Battery Lead
251054	24 ft. (7.3 m) Battery Lead

The 5 foot battery lead is used with a front receiver mount, and the 20 or 25 foot battery leads are used with a rear receiver mount, depending on the size of the vehicle.

For front mounting, route quick connect battery lead through grille leaving connector outside and connect red cable to positive (+) battery terminal and black cable to negative (-) battery terminal. Secure cable under hood using cable ties.

For rear mounting, connect battery power leads as described above. Secure cables under vehicle away from moving parts and exhaust system. Terminate routing near the center of the vehicle at the rear.

Be sure battery cables are not drawn taut across any surfaces which could damage them.

Installation

The Quick Mount is solely and exclusively designed for vehicle-mounted, non-industrial applications. All other applications will void warranty.

The Quick Mount must be front mounted with a front receiver hitch available from Ramsey for selected vehicles. For rear mounting of the QM, a SurePull Class III rear receiver or equivalent with a 5,000 lb. minimum weight carrying (WC) rating must be used.

Secure Quick Mount™ in the receiver with the Ramsey locking pin. Connect quick disconnect from Quick Mount™ winch to battery power lead. Plug remote switch into receptacle on solenoid assembly.

Clutch Operation

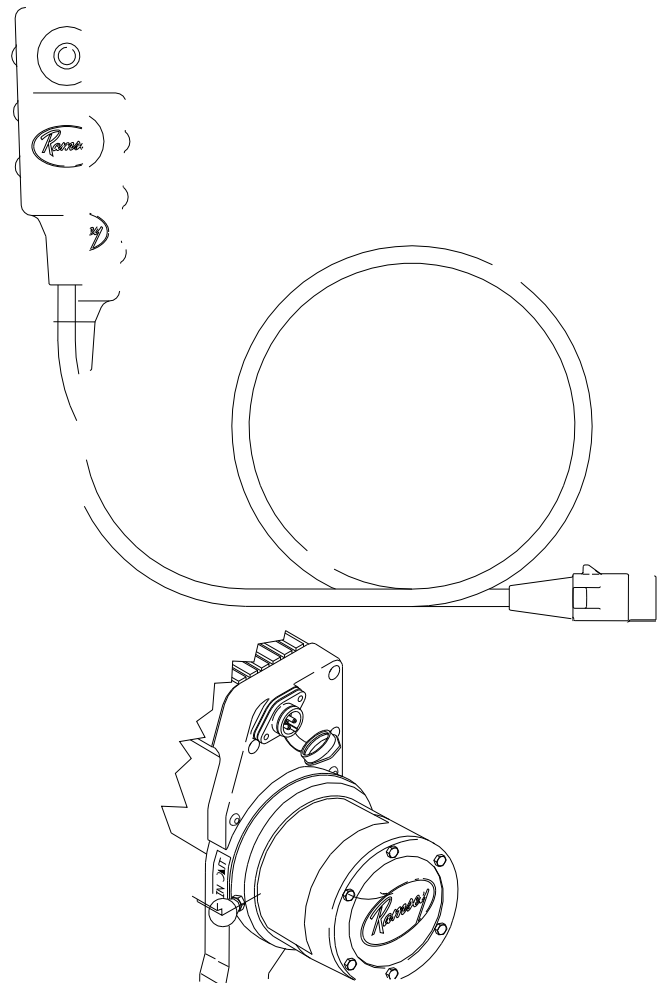
The winch clutch allows rapid unspooling of the wire rope for hooking onto the load or anchor point. The clutch is operated by the shifter knob located as shown below. The operation is as follows:

1. To disengage the clutch, move the clutch shifter knob to the "OUT" position. Wire rope may now be freespooled off the drum.
2. To engage the clutch, move the clutch shifter knob into the "IN" position. The winch is now ready for pulling.

Remote Control Switch Operation

The remote control switch is waterproof and has push button stations on either side. It is designed this way to prevent quick winch reversals which lead to premature solenoid failure. The switch is also color coded to aid you in not having to guess at the direction your winch will run. Make sure the motor has stopped fully before reversing. Run the winch forward and reverse to check connections. Snap appropriate plastic disc into proper thumb button cavity on remote switch after determining direction of rotation for winch drum.

DO NOT LEAVE SWITCH PLUGGED IN WHEN WINCH IS NOT IN USE.



MAINTENANCE AND CABLE INSTALLATION GUIDE

Maintenance

All moving parts are permanently lubricated with high temperature lithium grease at the time of assembly. Under normal conditions factory lubrication will suffice.

Lubricate cable periodically using light penetrating oil. Inspect cable for broken strands and replace if necessary. If the cable becomes worn or damaged, it must be replaced.

Corrosion on electrical connections will reduce performance or may cause a short. Clean all connections especially in the remote control switch and receptacle. In salty environments use a silicone sealer to protect from corrosion.

To minimize corrosion of the internal motor components that may occur due to condensation, power the winch in or out periodically. Energizing the motor will generate heat, which will help dissipate any moisture buildup in the motor. This should be performed at periodic intervals (such as with each oil change of your vehicle).

Note: Refer to the Troubleshooting Guide if the motor has been submerged.

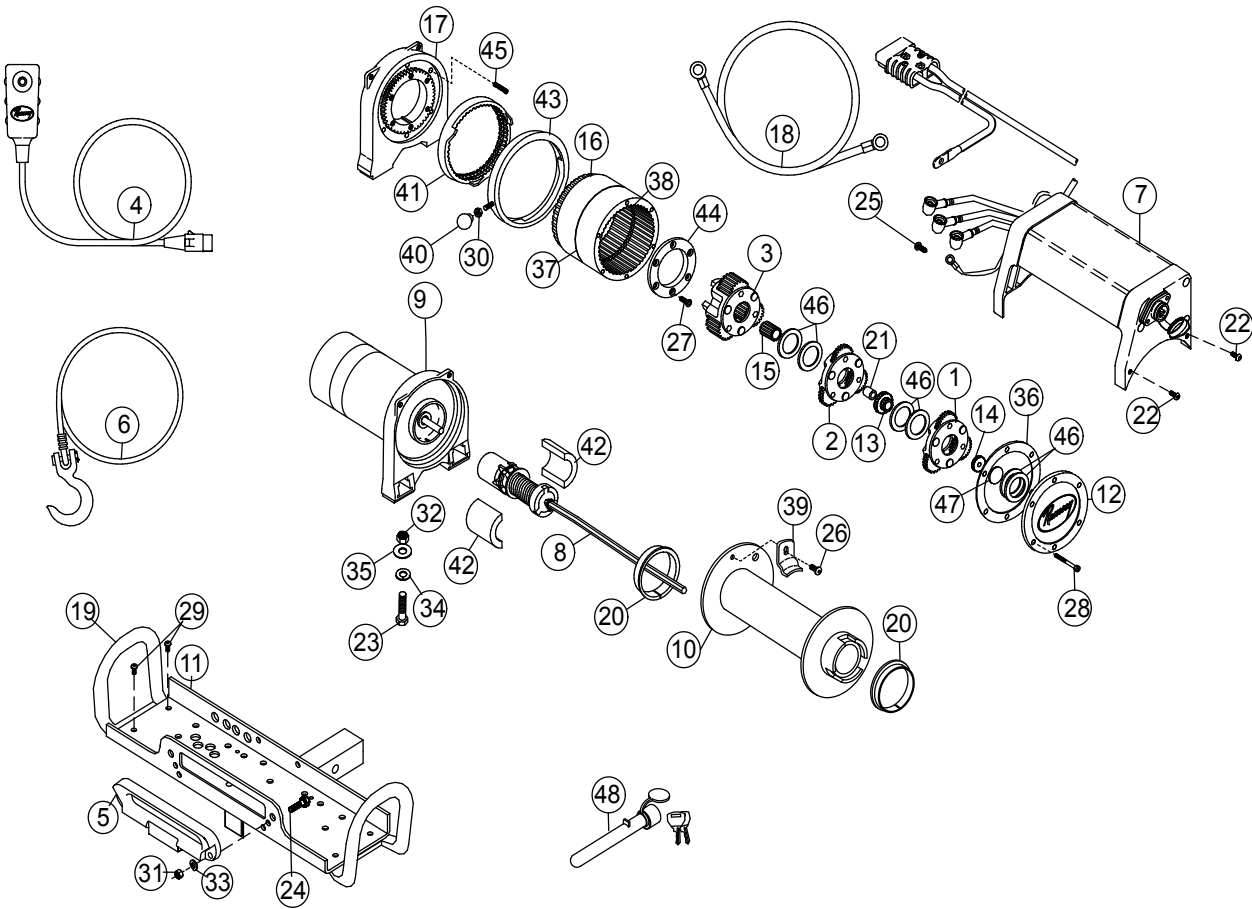
Cable Installation

1. Unwind the new cable by rolling it out along the ground to prevent kinking.
2. Remove the old cable and observe the manner in which it is attached to the cable drum.
3. Before installing the new cable assembly, securely wrap the end of the cable with plastic tape or similar tape to prevent fraying.
4. Position the cable drum so that the large 13/32" diameter hole in the drum flange is approximately at the top.
5. Feed the end of the rope opposite the hook through the fairlead and form a short bend (approximately 1/2" long) in the end of the cable. Insert the bend into the 13/32" hole in the drum flange and then carefully run the winch in the "reel in" direction approximately 3/4 revolution until the 1/4" diameter threaded hole in the drum flange is on top.
6. Secure the cable to the drum flange using the cable anchor and capscrew shown in the parts diagram on page 8. Securely tighten the capscrew, but do not overtighten.
7. Wind 5 wraps of cable onto the drum. Wind on the rest of the cable by pulling in a light load to keep tension constant. Allow the cable to swivel by using a length of chain or swivel block between the cable hook and the load.

Troubleshooting Guide

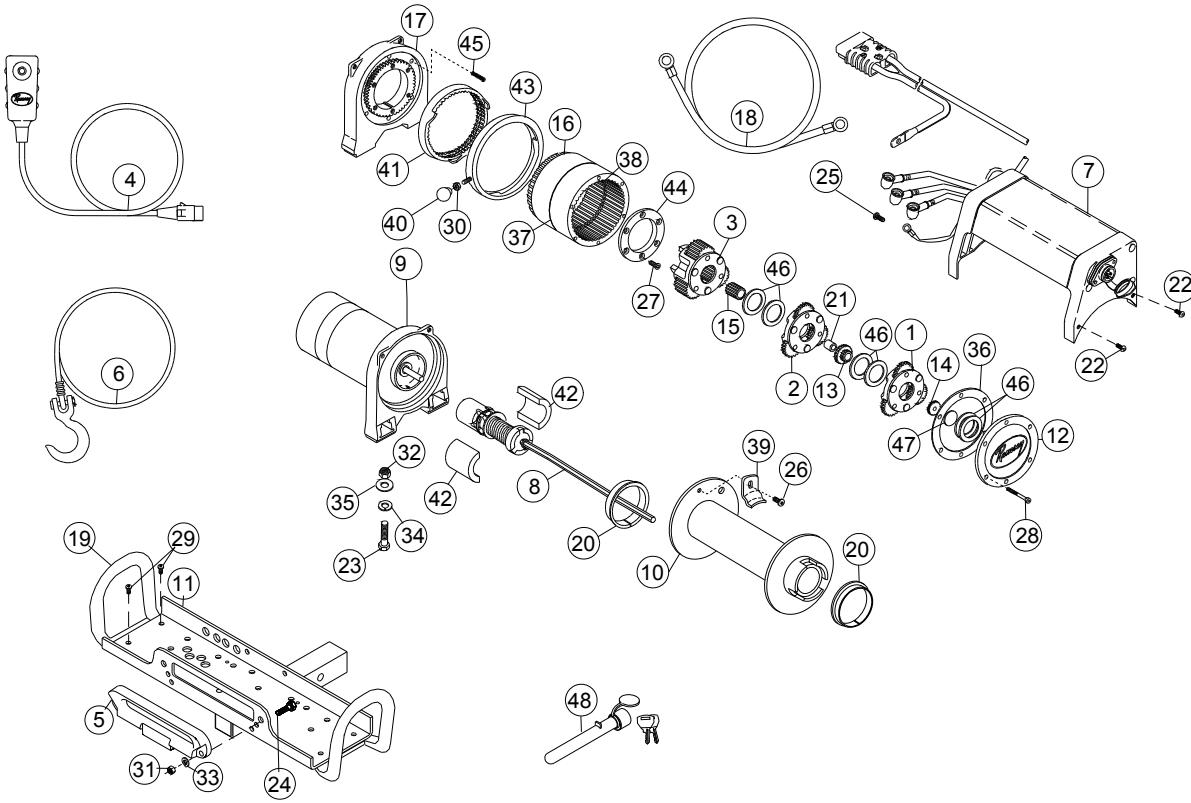
CONDITION	POSSIBLE CAUSE	CORRECTION
MOTOR RUNS IN ONLY ONE DIRECTION	Defective solenoid or stuck solenoid Defective remote control switch	Jar each solenoid to free contacts. Check each solenoid by applying 12 volts to coil-terminal (it should make an audible click when energized). Disengage winch clutch, remove remote control switch from the socket and jump pins at 8 and 4 o'clock. Motor should run. Jump pins at 8 and 10 o'clock. Motor should run.
MOTOR RUNS EXTREMELY HOT	Long period of operation Insufficient Battery	Cooling-off periods are essential to prevent overheating. Check battery terminal voltage under load. If 10 volts or less, replace or parallel another battery to it.
MOTOR RUNS, BUT WITH INSUFFICIENT POWER OR WITH LOW LINE SPEED	Bad connection Insufficient charging system	Check battery cable for corrosion; clean and grease. Replace with larger capacity charging system.
MOTOR RUNS, BUT DRUM DOES NOT TURN	Clutch not engaged	If clutch engaged but symptoms still exist, it will be necessary to disassemble winch to determine cause and repair.
MOTOR WILL NOT OPERATE	Defective solenoid or stuck solenoid Defective remote control switch Defective motor. Loose connections	Jar each solenoid to free contacts. Check each solenoid by applying 12 volts to coil-terminal (it should make an audible click when energized). Disengage winch clutch, remove remote control switch from the socket and jump pins at 8 and 4 o'clock. Motor should run. Jump pins at 8 and 10 o'clock. Motor should run. If solenoids operate, check for voltage at armature post; replace motor. Check connections for quick connect battery lead to battery and quick connect motor lead to winch.
MOTOR WATER DAMAGED	Submerged in water or water from high pressure car wash.	Allow to drain and dry thoroughly, then run motor without load in short bursts to dry windings.

QUICK MOUNT 9000



Item No.	Qty.	Parts No.	Description	Item No.	Qty.	Parts No.	Description
1	1	247009	GEAR CARRIER ASSEMBLY - INPUT	25	1	416212	SCREW #10-24NC X 3/8 LG. SOC. BUTT. HD. Z/P
2	1	247022	GEAR CARRIER ASSEMBLY - INTERMEDIATE	26	1	414830	CAPSCREW - 1/4-20NC X 3/8 SOC BUTTON HD
3	1	247023	GEAR CARRIER ASSEMBLY - OUTPUT	27	6	414861	CAPSCREW - 1/4-20NC X 3/4 FLT SOCHD NYLOK
4	1	282001	SWITCH ASSEMBLY - 12 FT	28	6	414868	CAPSCREW - 5/16-18NC X 2 1/2 LG. SOC HD NYLOK
	1	282012	SWITCH ASSEMBLY - 25 FT	29	4	414937	CAPSCREW - 3/8-16NC X 3/4 HX SOC BUTTON HD
5	1	251152	HAWSE FAIRLEAD ASSEMBLY	30	1	418029	NUT - 5/16-24NF HEX JAM Z/P
6	1	251210	CABLE ASSEMBLY	31	2	418033	NUT - 3/8-16NC HEX REG F/B
7	1	278180	SOLENOID - 12 V	32	4	418035	NUT - 3/8-16NC HEX REG Z/P
		278208	SOLENOID - 24 V	33	2	418175	LOCKWASHER - 3/8 MED F/B
8	1	296181	BRAKE ASSEMBLY	34	5	418177	LOCKWASHER - 3/8 MED Z/P
9	1	296569	MOTOR ASSEMBLY - 12V	35	4	418181	FLAT WASHER - /38 ID SAE Z/P
	1	296591	MOTOR ASSEMBLY - 24V	36	1	442208	GASKET - GEAR HSG COVER
10	1	296573	DRUM ASSEMBLY	37	1	442219	GASKET - RING GEAR
11	1	299697	QM PLATFORM ASSEMBLY	38	1	444077	GEAR - INPUT & INTERMEDIATE RING
12	1	328138	GEAR HOUSING COVER	39	1	448046	CABLE ANCHOR
13	1	334147	GEAR - INTERMEDIATE SUN	40	1	452001	KNOB
14	1	334154	GEAR - INPUT SUN	41	1	477002	LOCKING RING
15	1	334197	GEAR - OUTPUT SUN	42	2	477004	RING - HALF
16	1	334171	GEAR - OUTPUT RING	43	1	477011	CAM RING
17	1	338337	END BEARING - GEAR HOUSING	44	1	479007	RETAINER - RING GEAR
18	1	289141	CABLE ASSEMBLY - GROUND	45	6	494077	SPRING
19	2	395294	QM HANDLE	46	6	518020	THRUST WASHER
20	2	412056	BUSHING - DRUM	47	1	518027	THRUST DISC
21	1	412061	BUSHING - SHAFT	48	1	448097	LOCKING PIN
22	4	414823	CAPSCREW - 1/4-20NC X 3/4 LG. SOC. BUTT. HD. F/B				
23	4	414316	CAPSCREW - 3/8-16NC X 1-1/4 HX HD Z/P GR5				
24	2	414320	CAPSCREW - 3/8-16NC X 1-1/4 HX HD F/B GR5				

QUICK MOUNT 95000



Item No.	Qty.	Parts No.	Description	Item No.	Qty.	Parts No.	Description
1	1	247009	GEAR CARRIER ASSEMBLY - INPUT	25	1	416212	SCREW #10-24NC X 3/8 LG. SOC. BUTT. HD. Z/P
2	1	247022	GEAR CARRIER ASSEMBLY - INTERMEDIATE	26	1	414830	CAPSCREW - 1/4-20NC X 3/8 SOC BUTTON HD
3	1	247023	GEAR CARRIER ASSEMBLY - OUTPUT	27	6	414861	CAPSCREW - 1/4-20NC X 3/4 FLT SOCHD NYLOK
4	1	282001	SWITCH ASSEMBLY -12 FT	28	6	414868	CAPSCREW - 5/16-18NC X 2 1/2 LG. SOC HD NYLOK
5	1	282012	SWITCH ASSEMBLY -25 FT	29	4	414937	CAPSCREW - 3/8-16NC X 3/4 HX SOC BUTTON HD
6	1	251152	HAWSE FAIRLEAD ASSEMBLY	30	1	418029	NUT - 5/16-24NF HEX JAM Z/P
7	1	251210	CABLE ASSEMBLY	31	2	418033	NUT - 3/8-16NC HEX REG F/B
8	1	278180	SOLENOID	32	4	418035	NUT - 3/8-16NC HEX REG Z/P
9	1	296181	BRAKE ASSEMBLY	33	2	418175	LOCKWASHER - 3/8 MED F/B
10	1	296570	MOTOR ASSEMBLY - 4.8HP	34	5	418177	LOCKWASHER - 3/8 MED Z/P
11	1	296573	DRUM ASSEMBLY	35	4	418181	FLAT WASHER - /38 ID SAE Z/P
12	1	299697	QM PLATFORM ASSEMBLY	36	1	442208	GASKET - GEAR HSG COVER
13	1	328138	GEAR HOUSING COVER	37	1	442219	GASKET - RING GEAR
14	1	334147	GEAR - INTERMEDIATE SUN	38	1	444077	GEAR - INPUT & INTERMEDIATE RING
15	1	334154	GEAR - INPUT SUN	39	1	448046	CABLE ANCHOR
16	1	334171	GEAR - OUTPUT SUN	40	1	452001	KNOB
17	1	334197	GEAR - OUTPUT RING	41	1	477002	LOCKING RING
18	1	338337	END BEARING - GEAR HOUSING	42	2	477004	RING - HALF
19	2	289141	CABLE ASSEMBLY - GROUND	43	1	477011	CAM RING
20	2	395294	QM HANDLE	44	1	479007	RETAINER - RING GEAR
21	2	412056	BUSHING - DRUM	45	6	494077	SPRING
22	4	412061	BUSHING - SHAFT	46	6	518020	THRUST WASHER
23	4	414823	CAPSCREW - 1/4-20NC X 3/4 LG. SOC. BUTT. HD. F/B	47	1	518027	THRUST DISC
24	2	414316	CAPSCREW - 3/8-16NC X 1-1/4 HX HD Z/P GR5	48	1	448097	LOCKING PIN
		414320	CAPSCREW - 3/8-16NC X 1-1/4 HX HD F/B GR5				

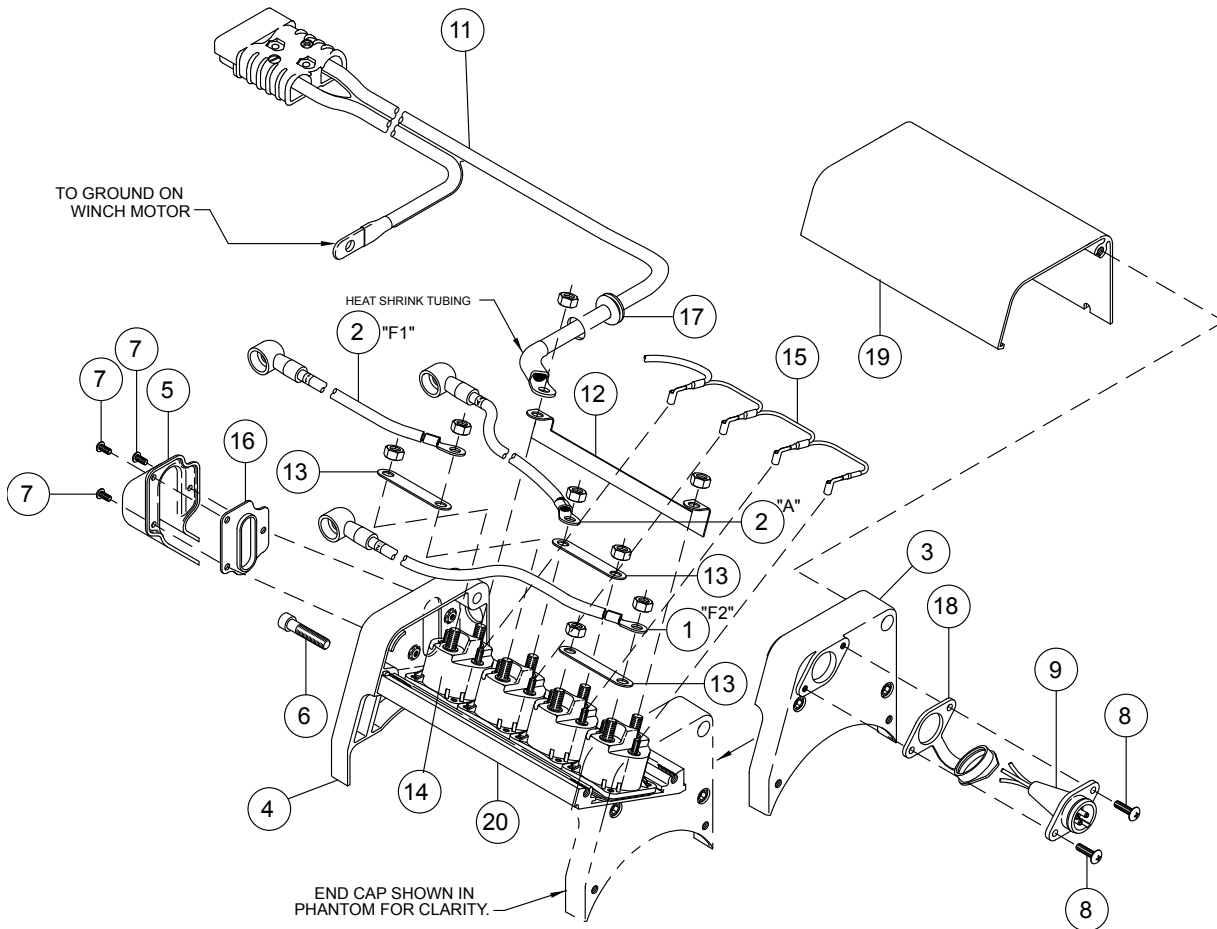
Solenoid Assembly Parts List

Solenoid Assembly Parts List: QM 9000/9500

278180 12V

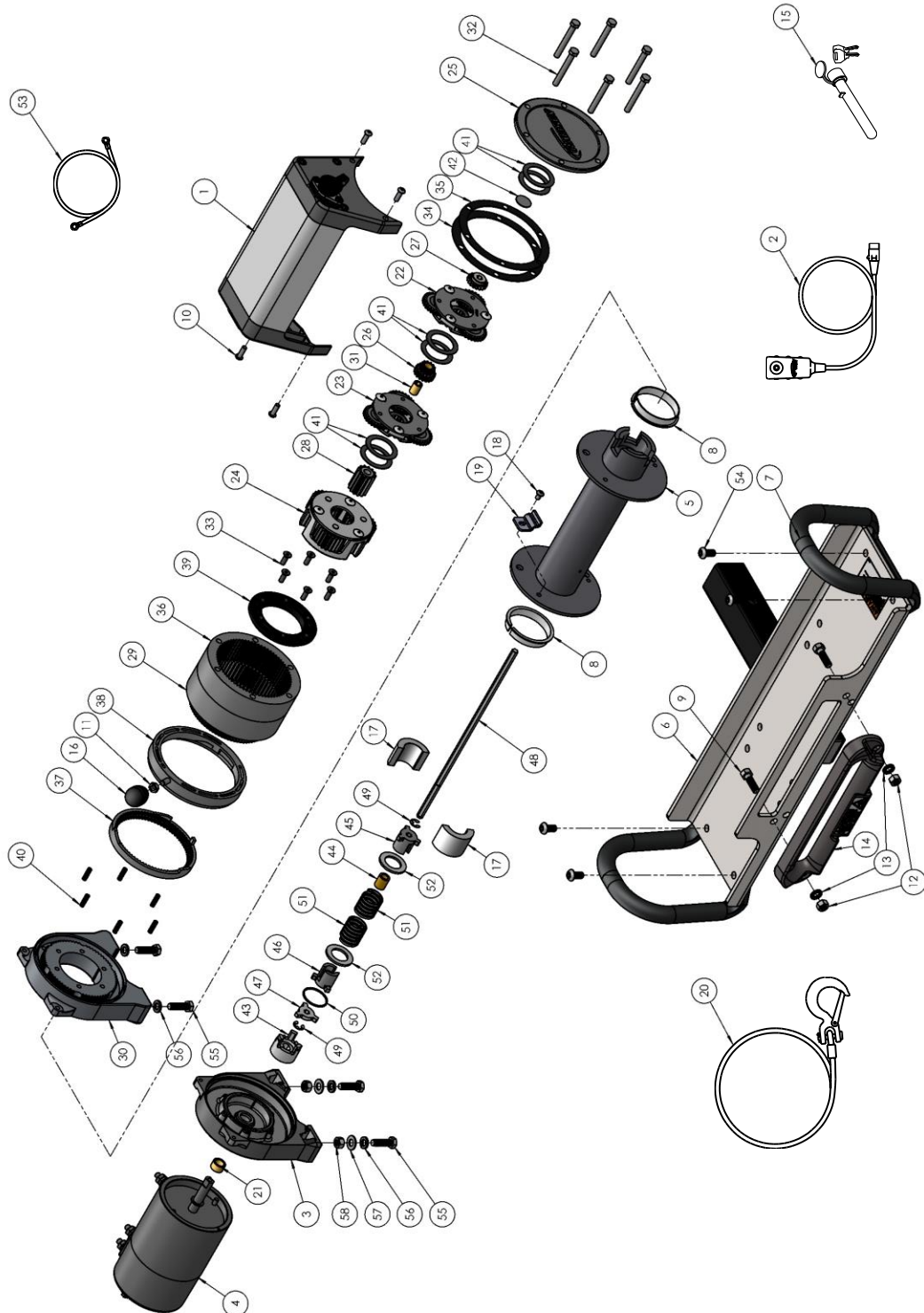
278208 24V

Item No.	Qty.	Part No.	Description	Item No.	Qty.	Part No.	Description
1	1	289195	WIRE ASSEMBLY - #2 GA 13.25" MOTOR LEAD	12	1	440259	STRAP - COPPER
2	2	289196	WIRE ASSEMBLY - #2 GA 14.5" MOTOR LEAD	13	3	440260	STRAP - COPPER
3	1	316101	CAP - LH END	14	4	440262	SOLENOID - 12V
4	1	316103	CAP - RH END	4	4	440265	SOLENOID - 24V
5	1	413078	COVER - ASSEMBLY	15	1	440276	WIRE ASSEMBLY - SOLENOID GROUND
6	6	414880	CAPSCREW - 5/16-18NC X 1-1/2 HX SOC F/B	16	1	442222	GASKET
7	3	416207	SCREW - #8-32NC X 3/8 HX SOC BUTT HEAD F/B	17	1	472047	GROMMET
8	2	416227	SCREW - #10-24NC X 3/4 TRUSS RECESS F/B	18	1	482029	COVER - FEMALE RECEPTACLE
9	1	430022	CONNECTOR - FEMALE RECEPTACLE	19	1	682166	COVER - WIRE
10	1	440138	TIE - CABLE	20	1	682167	CHANNEL - SOLENOID
11	1	440180	WIRE ASSEMBLY - 24" QUICK CONNECT				



Kits and Maintenance Parts

111040



Kits and Maintenance Parts

111040

ITEM #	QTY.	PART NUMBER	DESCRIPTION	KITS			
				248070	246078	222074	207056
1	1	278180	SOLENOID ASSY				
2	1	282001	SWITCH ASSY-12FT LG				
3	1	338339	END BEARING-MOTOR				
4	1	682164	MOTOR-ASSY PRESTOLITE				
5	1	296573	DRUM AND CABLE ASSEMBLY 105' X 5/16"				
6	1	299697	ASSEMBLY-QM PLATFORM				
7	2	395294	HANDLE-QM				
8	2	412056	BUSHING-DRUM	X			
9	2	414320	BOLT-3/8-16NCX1 1/4,HXHD,GR5				
10	4	414823	BOLT-1/4-20NCX3/4LG,HXSOCBUTTHD				
11	1	418029	NUT-5/16-24NF HEX JAM			X	
12	2	418033	NUT-3/8-16NC,HEX				
13	2	418175	LOCKWASHER-3/8 MED SECT				
14	1	422017	ASSY-HAWSE FAIRLEAD				
15	1	448097	PIN-5/8 RECEIVER HITCH				
16	1	452001	KNOB-LEVER			X	
17	2	477004	RING-HALF,INPUT FRICTION				
18	1	414830	CAPSCREW-1/4-20NCX3/8,SOC BUTTON HD				
19	1	448046	CABLE ANCHOR				
20	1	216028	ASSY-CABLE				
21	1	402122	BEARING-MTR SHAFT	X			
22	1	247009	GEAR CARRIER ASSY-INPUT				
23	1	247022	GEAR CARRIER ASSY-INTERMEDIATE				
24	1	247023	GEAR CARRIER ASSY-OUTPUT				
25	1	328138	COVER-GEAR HSG				
26	1	334147	GEAR-INTERM				
27	1	334154	GEAR-INPUT SUN				
28	1	334197	GEAR-OUTPUT SUN				
29	1	334235	RING-GEAR				
30	1	338337	END BEARING-GEAR SIDE				
31	1	412061	BUSHING-SHAFT				
32	6	414159	CS-5/16-18UNCX2.50,HXHD,GR5				
33	6	414861	BOLT-1/4X20NCX3/4,FLAT SOCHD				
34	1	442208	GASKET-GH		X		
35	1	442219	GASKET-RING GEAR		X		
36	1	444114	RING GEAR INPUT				
37	1	477002	LOCKING RING-RING GEAR			X	
38	1	477011	CAM RING			X	
39	1	479007	RETAINER-RING GEAR				
40	6	494077	SPRING-RING GEAR			X	

Kits and Maintenance Parts

111040

ITEM #	QTY.	PART NUMBER	DESCRIPTION	KITS			
				248070	246078	222074	207056
41	6	518020	THRUST WASHER-1.39 ID	X			
42	1	518027	THRUST DISC-.035X.922DIA	X			
43	1	324274	COUPLING-BRK				X
44	1	412060	BUSHING-BRAKE DRM	X			X
45	1	436005	DRUM-OUTPUT BRAKE				X
46	1	436008	DRUM-INPUT				X
47	1	438011	SPROCKET-INPUT				X
48	1	489006	SHAFT-INPUT-5/16HEX,13.268LG				
49	2	490029	SNAP RING				X
50	1	490033	RING-RETAINER				X
51	2	494077	SPRING-BRK,1.204 ODX1.5LG				
52	2	518059	RETAINER				X
53	1	440201	ASSEMBLY - WIRE SWITCH				
54	4	257544	CAPSCREW-3/8-16X3/4,HXSOCBUTTHD				
55	4	257126	CAPSCREW-3/8-16NCX1 1/4,HXHD				
56	4		LOCKWASHER-3/8 MED SECT				
57	2		LOCKWASHER-3/8				
58	2		NUT-3/8-16NC HEX REG				

**RAMSEY WINCH INDUSTRIAL WINCH
LIMITED WARRANTY**

1.1 Scope of Warranty Coverage. Upon the terms and subject to the conditions set forth in this limited warranty:

- (a) RAMSEY WINCH (referred to herein as “**RAMSEY WINCH**” or the “**Manufacturer**”) warrants to each initial end user customer (a “**Purchaser**”) of a new industrial winch together with any accessories manufactured and sold directly from RAMSEY WINCH (the “**Product**”) that the Product shall be free from defects in material and workmanship, under normal working and service conditions, for a period of eighteen (18) months from the date the Product is shipped from RAMSEY WINCH. (the “**Warranty Term**”). A Purchaser shall be eligible for an additional eighteen (18) months of coverage in addition to the Warranty Term (also referred to as the “**Standard (+) PLUS benefit**”) only if the Purchaser (i) complies with Section 1.2(a) and (ii) registers the Product during the Warranty Term at myproduct.ramseywinch.com.
- (b) Notwithstanding the foregoing, this warranty does not cover components damaged by accident, abuse, misuse, neglect, untrained operators, collision, overloading, modification, disassembly, rework, misapplication, improper installation, lack of lubrication or maintenance, or improper service. This warranty does not cover the paint or material finish, rope (wire or synthetic), removal or reinstallation of the winch, or normal wear and tear and loss of functionality due to aging of the Product (which may include but is not limited to bearings, bushings, seals, O-rings, gaskets, brake material, motor brushes, electrical cables and more).

1.2 Eligibility of Warranty Coverage.

- (a) A Purchaser shall be eligible for warranty coverage under this Limited Warranty during the Warranty Term only if:
 - (i) Prior to placing a Product in service, and throughout use of the Product during the Warranty Term, the Purchaser provides (or causes to be provided) proper storage such that foreign objects (e.g. rain or debris) cannot enter any Product through entry ports which are normally closed during operation.; and
 - (ii) The Purchaser maintains, or causes to be maintained, the Product according to commercially reasonable standards and utilizes the Product for the purposes for which it was created; and
 - (iii) No repairs or alterations have been made by any party other than RAMSEY WINCH, including Purchaser, unless otherwise authorized in writing by RAMSEY WINCH.

1.3 Transferability of Warranty.

- (a) This warranty is transferable only from the Purchaser to the first subsequent transferee (the “**Transferee**”) of the Product from Purchaser upon (i) written notification to RAMSEY WINCH and (ii) registration of the transfer, both within 30 days of such Product transfer.
- (b) Upon satisfaction of transfer requirements set forth in Section 1.3(a), the Transferee shall succeed to all the rights and obligations of the Purchaser set forth in this Limited Warranty.

1.4 Certain Limitations on Scope of Warranty Service.

- (a) Any obligation of RAMSEY WINCH under this warranty, statutory or otherwise, is limited to the repair of the Product, at its factory or Authorized Service Centers. Notwithstanding the foregoing, if field service or repair is performed by RAMSEY WINCH at the request of the Purchaser and no defect is found with material or workmanship of the Product, the Purchaser shall compensate RAMSEY WINCH for its time and expenses within thirty (30) days of delivery of an invoice relating to the same. If repair is determined by RAMSEY WINCH in its sole, absolute and uncontrolled discretion to be impossible or impractical, then RAMSEY WINCH may satisfy this warranty by replacing the Product. RAMSEY WINCH will not provide any cash payment or credits for defective materials or workmanship.

- (b) Purchaser shall be responsible for any and all freight charges for any Product receiving warranty service under this limited warranty. Any travel time, transportation charges, freight charges, or similar costs incurred by RAMSEY WINCH in connection with the replacement or repair of defective parts, shall, be the responsibility of the Purchaser. If applicable, RAMSEY WINCH shall invoice Purchaser for the total amount of such charges within sixty (60) days of fulfilling its duties under this warranty, payable within thirty (30) days of delivery of such invoice. In no event shall RAMSEY WINCH be liable for bills for service, labor or other expenses that have been incurred by the Purchaser without approval or prior authorization by RAMSEY WINCH for inspection, maintenance, or repair of the Product.
- (c) If a Product is found to be operable upon inspection, the Product, at Purchaser's election, may be either (1) returned to the Purchaser with a service charge from RAMSEY WINCH for inspection, cleaning, and routine replacement of all rubber components and any other parts that show wear; or (2) RAMSEY WINCH can dispose of the product safely.

1.5 **Limitations of Liability.** RAMSEY WINCH shall in no event be liable for punitive, special or consequential damages relating to the Product or this Warranty. RAMSEY WINCH makes no warranty in respect to third-party accessories, upgrades, or additions to the Product.

1.6 **Improving Product.** RAMSEY WINCH reserves the right to improve the Product through changes in design or materials as it may deem desirable or necessary without being obligated to incorporate, upgrade, or otherwise modify previously manufactured products.

1.7 **Limitations of Warranty.**

- (a) THE WARRANTY SET FORTH ABOVE IS THE ONLY EXPRESS WARRANTY. RAMSEY WINCH HEREBY DISCLAIMS AND EXCLUDES ANY OTHER EXPRESS, IMPLIED, OR STATUTORY WARRANTIES, ARISING BY OPERATION OF LAW, COURSE OF DEALING, COURSE OF PERFORMANCE, USAGE, OF TRADE, OR OTHERWISE, INCLUDING, WITHOUT LIMITATION, ANY WARRANTIES OF MERCHANTABILITY, FITNESS FOR A PARTICULAR PURPOSE, AND INTELLECTUAL PROPERTY RIGHTS OF A THIRD PARTY.
- (b) ANY IMPLIED WARRANTY WHICH BY LAW MAY NOT BE EXCLUDED IS LIMITED IN DURATION TO ONE (1) YEAR FROM THE DATE OF ORIGINAL RETAIL PURCHASE OF THE PRODUCT.
- (c) This warranty gives you specific legal rights, and you may also have other rights which vary from jurisdiction to jurisdiction.
- (d) This warranty is valid only in the U.S.A. and Canada. For warranty outside the U.S.A. and Canada contact your nearest Ramsey Winch Distributor.

1.8 **No Modifications to Warranty.** No RAMSEY WINCH dealer, distributor, agent or employee is authorized to make any modification, extension or addition to this warranty.

1.9 **How to Apply for Warranty Coverage.**

All claims are handled by contacting your nearest Ramsey Winch Distributor. For questions, please contact customer support: rwcustomersupport@ramseyindustries.com.

Visit [Dealer Locator - Ramsey Winch](#) for Ramsey Winch Distributor locations and contact information.

Additional warranty, service support, product information, and parts information can be found on www.ramseywinch.com.

Notes

