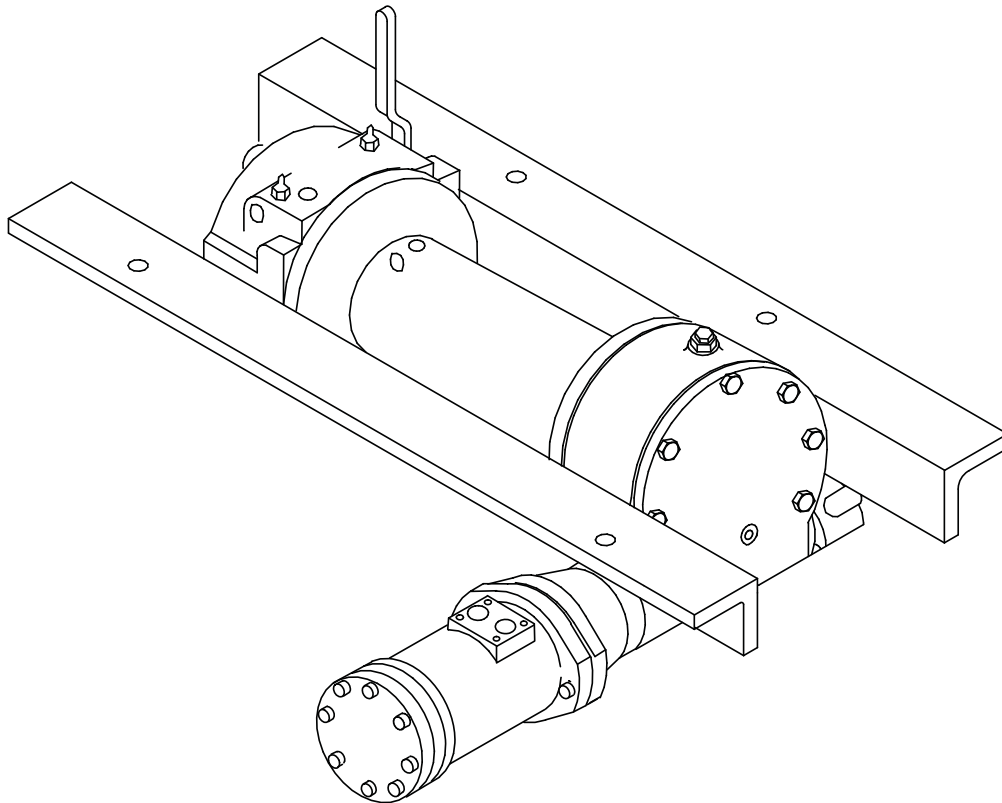




OM-914050-0226-L

# OPERATING SERVICE AND MAINTENANCE MANUAL



## MODEL HDG 350 LEVER EQUIPPED INDUSTRIAL LOW-MOUNT



**CAUTION ! READ AND UNDERSTAND THIS MANUAL BEFORE INSTALLATION  
AND OPERATION OF WINCH. SEE WARNINGS!**

# TABLE OF CONTENTS

INTRODUCTION	1
WARRANTY INFORMATION	1
SPECIFICATION	1
TECHNIQUES OF OPERATION	2
WARNINGS.	2
WINCH MAINTENANCE	3
CABLE INSTALLATION	3
HYDRAULIC SYSTEMS / PERFORMANCE CHARTS	4
TYPICAL LAYOUT / HYD. SYSTEM DIAGRAM	4
TROUBLE SHOOTING GUIDE	5
INSTRUCTIONS FOR OVERHAUL	
DIS-ASSEMBLY	5-7
RE-ASSEMBLY	8-9
ADJUSTING THE OIL COOLED BRAKE	10
SERVICING THE OIL COOLED BRAKE	11
RE-ASSEMBLING AND CHECKING THE BRAKE	12
TEST FOR PROPER BRAKE ASSEMBLY	12
DIMENSIONAL DRAWING - F.O.L.S	13
DIMENSIONAL DRAWING - F.O.R.S	14
PARTS LISTS & PARTS DRAWINGS	15-17
LIMITED WARRANTY	BACK COVER

# RAMSEY WINCH MODEL HDG-350

**PLEASE READ THIS MANUAL CAREFULLY.**

This manual contains useful ideas in obtaining the most efficient operation from your Ramsey Winch, and safety procedures one needs to know before operating a Ramsey Winch.

**WARRANTY INFORMATION**

Ramsey Winches are designed and built to exacting specifications. Great care and skill go into every winch we make. If the need should arise, warranty procedure is outlined on the back of your self-addressed postage paid warranty card. Please read and fill out the enclosed warranty card and send it to Ramsey Winch Company. If you have any problems with your winch, please follow instructions for prompt service on all warranty claims. Refer to back page for limited warranty.

**SPECIFICATIONS:** CONFORMS TO SAE J706

Rated Line Pull	(lbs.)	.....	10,000			
	(Kg)	.....	4,536			
Gear Reduction		.....	30:1			
Weight - HDG-350	(without cable)	.....	64 lbs. (29 Kg)			
	HDGY-350 (without cable)	.....	56 LBS (25.4 Kg)			
Duty Cycle	(ft.)	.....	183			
<b>LAYER OF CABLE</b>			<b>1</b>	<b>2</b>	<b>3</b>	<b>4**</b>
<b>* Rated line pull per layer</b>	lbs.		10,000	8,100	6,900	4,800
	Kg		4,536	3,670	3,120	2,180
<b>* Cable Capacity</b>	ft.		20	50	85	125
	m		6	15	25	37
<b>"Y" Drum Cable Capacity per layer</b>	ft,		10	25	45	70
	m		3	7	13	21
<b>* Line Speed (at 15 GPM)</b>	FPM		32	38	44	54
	MPM		9,7	11,5	13,3	16,4
* These specifications are based on recommended wire rope of .44 inch dia. extra improved plow steel or equivalent						
** Does not conform to SAE J706 specifications.						

**NOTE:** The rated line pulls shown are for the winch only. Consult the wire rope manufacturer for wire rope ratings.

## TECHNIQUES OF OPERATION

The best way to get acquainted with how your winch operates is to make test runs before you actually use it. Plan your test in advance. Remember, you hear your winch, as well as see it operate. Get to recognize the sounds of a light steady pull, a heavy pull, and sounds caused by load jerking or shifting. Gain confidence in operating your winch and its use will become second nature with you.

The uneven spooling of cable, while pulling a load, is not a problem, unless there is a cable pileup on one end of drum. If this happens reverse the winch to relieve the load and move your anchor point further to the center of the vehicle. After the job is done you can unspool and rewind for a neat lay of the cable.

When pulling a load where there is even a remote chance of cable failure, place a blanket, jacket or tarpaulin over the cable about six feet behind the hook. This will slow the snap back of a broken cable and could prevent serious injury.

NOTE: The Ramsey level winder is an available accessory for tightly respooling unloaded cable onto the drum.

The winch clutch allows rapid unspooling of the cable, from cable drum, for hooking onto the load. The clutch is operated by the lever located on the clutch housing of the winch.

1. TO DISENGAGE CLUTCH, run the winch in the reverse (reel out) direction until the load is off the cable. Grasp lever and push toward drum to the "OUT" position. The lever is latched "out" by ball and detent in jaw clutch and drum shaft. The cable may now be pulled from cable drum by hand.
2. TO ENGAGE CLUTCH, pull handle away from drum to the "IN" position, while rotating drum, until clutch jaws engage with drum jaws. **CLUTCH MUST BE TOTALLY ENGAGED DURING WINCHING OPERATIONS.** The lever is latched "in" by ball and detent in jaw clutch and drum shaft. The plastic plug in top of clutch housing may be removed, for inspection of clutch, to assure total engagement.

## WARNINGS

**CLUTCH MUST BE TOTALLY ENGAGED BEFORE STARTING THE WINCHING OPERATION. DO NOT DISENGAGE CLUTCH UNDER LOAD.**

**DO NOT LEAVE CLUTCH ENGAGED WHEN WINCH IS NOT IN USE.**

**STAY OUT FROM UNDER AND AWAY FROM RAISED LOADS.**

**STAND CLEAR OF CABLE WHILE PULLING. DO NOT TRY TO GUIDE CABLE.**

**DO NOT EXCEED MAXIMUM LINE PULL RATINGS SHOWN IN TABLE.**

**DO NOT USE WINCH TO LIFT, SUPPORT, OR OTHERWISE TRANSPORT PERSONNEL.**

**A MINIMUM OF 5 WRAPS OF CABLE AROUND THE DRUM BARREL IS NECESSARY TO HOLD THE LOAD. CABLE SETSCREW IS NOT DESIGNED TO HOLD LOAD**

## WINCH MAINTENANCE

Adhering to the following maintenance schedule will keep your winch in top condition and performing as it should with a minimum of repair.

### **A. WEEKLY**

1. Check the oil level and maintain it to the oil level plug. If oil is leaking out, determine location and repair.
2. Check the pressure relief plug in top of the gear housing. Be sure that it is in good operating condition so that hot oil gasses may escape.
3. Lubricate cable with light oil.

### **B. MONTHLY**

1. Lubricate the various grease fittings located in the cable drum, end bearing, clutch housing or clutch operating linkage. Any good grade of moly-disulfide containing grease is acceptable.
2. Check the action of the sliding clutch, making sure it is fully engaging and disengaging with the cable drum. Remove the plastic plug in top of the housing and observe if the clutch is fully engaging. Observe the jaws on both the clutch and cable drum, checking for rounding of the driving faces. If rounding has occurred they should be replaced immediately.
3. Check the winch mounting bolts. If any are missing, replace them and securely tighten any that are loose. Make sure to use only grade 5 bolts or better.
4. Inspect the cable. If the cable has become frayed with broken strands, replace immediately.

### **C. ANNUALLY**

1. Drain the oil from the winch annually or more often if winch is used frequently.
2. Fill the winch to the oil level plug with clean kerosene. Run the winch a few minutes with no load in the reel in direction. Drain the kerosene from the winch.
3. Refill the winch to the oil level plug with all purpose E.P. 140 gear oil.
4. Inspect frame and surrounding structure for cracks or deformation.
5. Gear wear can be estimated by rocking the drum back and forth and if necessary drain oil and remove cover for closer inspection.

## WINCH MOUNTING

It is most important that this winch be mounted securely so that the three major sections (the clutch housing end, the cable drum and the gear housing end) are properly aligned. 3/8" x 2-1/2" x 2-1/2" x 36" lg. high strength steel angle is recommended.

## CABLE INSTALLATION

1. Unwind cable by rolling it out along the ground to prevent kinking. Securely wrap end of cable, opposite hook, with plastic or similar tape to prevent fraying.
2. Insert the end of cable, opposite hook end, into the 1/2" dia. hole in drum barrel. Secure cable to drum barrel, using setscrew furnished with winch. **TIGHTEN SETSCREW SECURELY.**
3. Carefully run winch in the "reel-in" direction. Keeping tension on end of cable, spool all the cable onto the cable drum, taking care to form neatly wrapped layers.

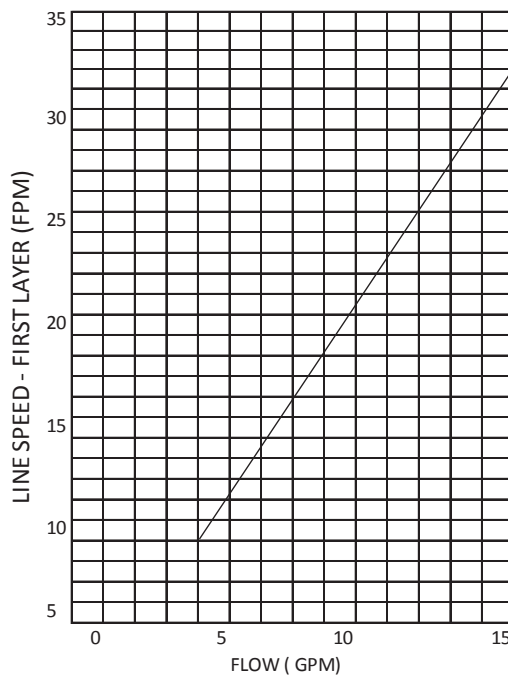
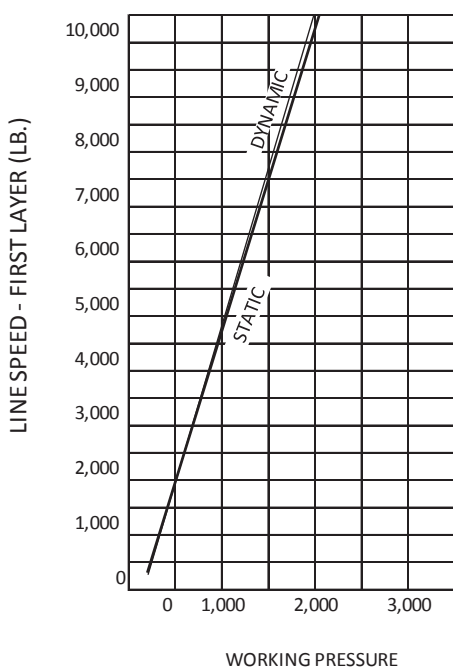
# HYDRAULIC SYSTEMS

Refer to performance charts, below, to properly match your hydraulic system to the HDG-350 winch performance. The charts consist of:

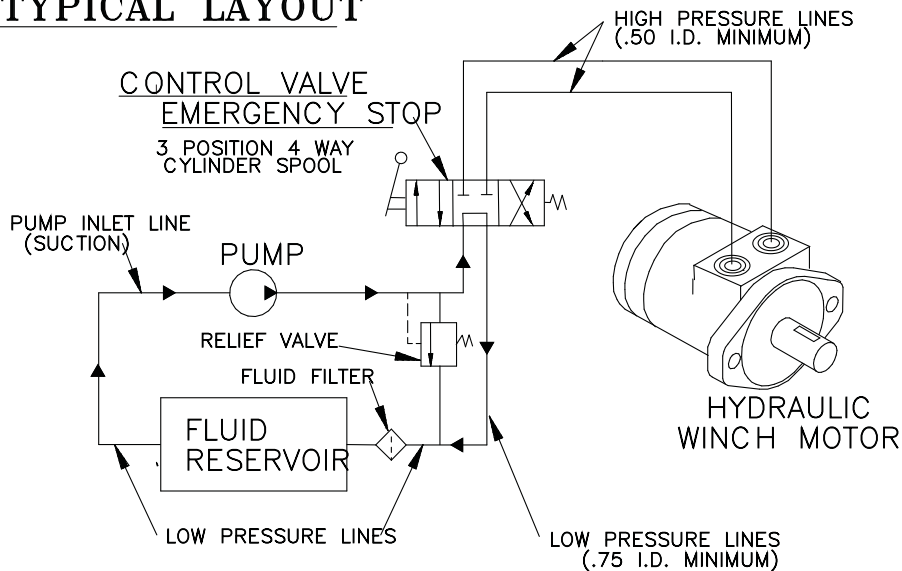
1. Line pull (lbs.) first layer vs. working pressure (P.S.I.). STATIC refers to lifting a suspended load from rest; DYNAMIC refers to maintaining the motion of a moving load.
2. Line speed, first layer (F.P.M.) vs. gallons per minute (G.P.M.).

Performance based on a motor displacement of 3.6 cubic inches with 15 GPM maximum flow rate.

## HDG-350R PERFORMANCE 10,000 LB. DUTY RATING 30:1 GEAR RATIO WITH 3.6 C.I.D. MOTOR



## TYPICAL LAYOUT

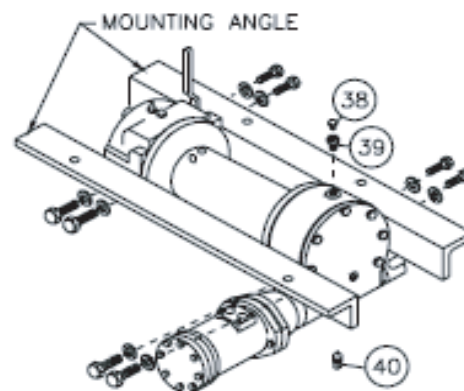


## TROUBLE SHOOTING GUIDE

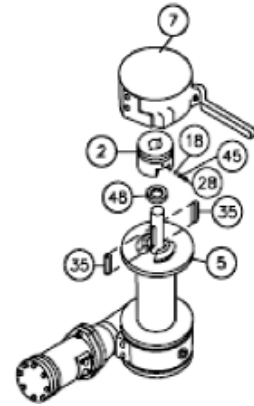
CONDITION	POSSIBLE CAUSE	CORRECTION
Clutch inoperative or binds up.	<ol style="list-style-type: none"> <li>1. Dry or rusted shaft.</li> <li>2. Bent yoke or linkage.</li> <li>3. Clutch jaws are in contact.</li> </ol>	<ol style="list-style-type: none"> <li>1. Clean and lubricate.</li> <li>2. Replace yoke or shaft assembly.</li> <li>3. See Techniques of Operation</li> </ol>
Oil leaks from housing	<ol style="list-style-type: none"> <li>1. Seal damaged or worn.</li> <li>2. Too much oil.</li> <li>3. Damaged gasket.</li> </ol>	<ol style="list-style-type: none"> <li>1. Replace seal.</li> <li>2. Drain excess oil. Refer to Techniques of Operation.</li> <li>3. Replace gasket.</li> </ol>
Winch runs too slow	<ol style="list-style-type: none"> <li>1. Hydraulic motor worn out.</li> <li>2. Low flow rate.</li> </ol>	<ol style="list-style-type: none"> <li>1. Replace motor.</li> <li>2. Check flow rate. Refer to Hydraulic Systems flow chart, page 4.</li> </ol>
Cable Birdnests when clutch is disengaged.	<ol style="list-style-type: none"> <li>1. Drag brake disc worn.</li> </ol>	<ol style="list-style-type: none"> <li>1. Replace discs.</li> </ol>
Hydraulic fluid leaks out hole in motor adapter	<ol style="list-style-type: none"> <li>1. Hydraulic motor shaft seal damaged.</li> </ol>	<ol style="list-style-type: none"> <li>1. Replace seal.</li> </ol>

## INSTRUCTIONS FOR OVERHAUL OF HDG-350 DIS-ASSEMBLY

1. Drain oil from gear housing by removing #40 plug from bottom of gear housing. Remove plugs #38 & #39 from top of gear housing. Remove mounting angles from winch by removing hardware shown.

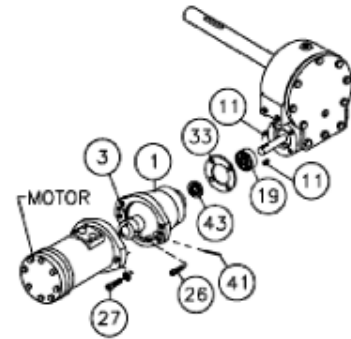


- Slide clutch housing #7 from end of drum shaft. Remove setscrew #28, spring #45, and poppet ball #18 from jaw clutch #2. Slide jaw clutch from end of drum shaft. Remove two keys #35 from keyways. A screwdriver can be used, at notch, to aid in the removal of keys. Once keys have been removed, drum #5 and thrust washer # 48 can be removed from drum shaft.



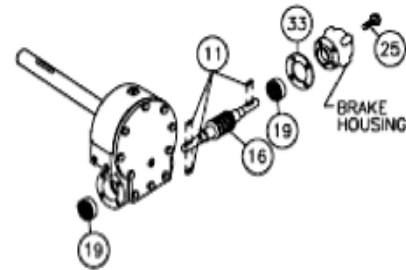
- Remove motor and coupling #3 from #1 adapter by unscrewing two #27 capscrews with lockwasher.

Remove keys #11 from worm shaft. Unscrew four capscrews #26 and remove adapter from gear housing. Replace adapter seal #43 and gasket #33.



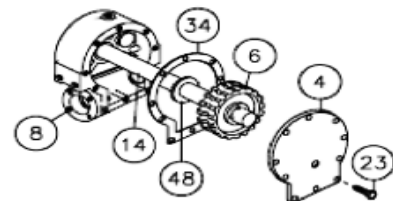
- See page 12 for servicing the oil cooled brake. Remove brake housing mounting screws #25 and remove brake with gasket. Replace gasket #33. Remove worm #16 and bearings #19 from gear housing. Use soft hammer to gently tap input end of worm and drive worm and bearing from gear housing. Once worm has been removed from housing, bearing can be pressed from end of worm.

Check for signs of wear or damage to worm #16 and bearing #19. Replace if necessary.



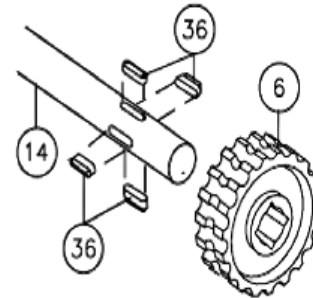
- Remove gear housing cover #4 from gear housing #8 by unscrewing capscrews #23. Thread two of the capscrews into the two tapped holes of cover and tighten. This will pull the cover loose from gear housing.

Remove cover gasket #34 and pull shaft #14, with gear attached, and thrust washer #48 from gear housing.

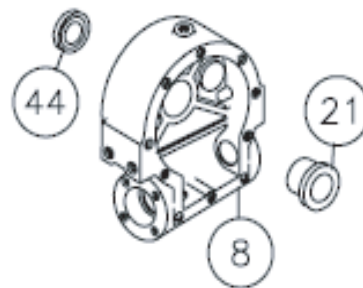


6. Check for signs of wear on gear teeth. If replacement of gear is necessary, replace as follows:

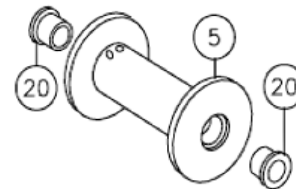
- a) Press gear #6 from shaft #14.
- b) Examine shaft keys and keyways. If distortion of keys and/or keyways is evident, shaft and keys should be replaced.
- c) Use a soft hammer to gently tap keys #36 into keyways. Press gear #6 over shaft and keys. Gear must be centered over keys.



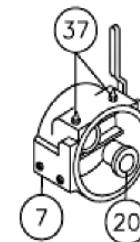
7. Remove seal #44 from back of #8 gear housing. Press bushing #21 from gear housing. Press new bushing and seal back into place.



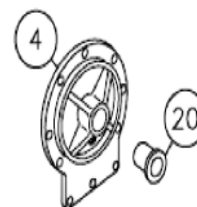
8. Check drum bushings #20 for signs of wear. Replace if necessary by pressing old bushings from drum. Press new ones into place.



9. Check clutch housing bushing #20 for wear. If necessary, remove old bushing and press new bushing into place. Apply grease to lube fittings #37 to lubricate clutch shifter shaft.

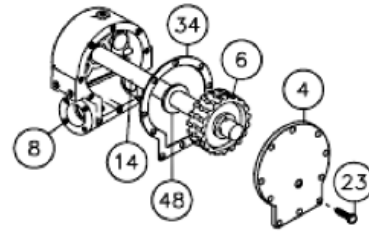


10. Check cover bushing #20 for signs of wear. If necessary remove old bushing and press bushing into place.

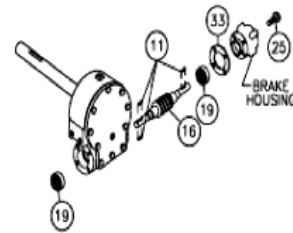


## RE-ASSEMBLY

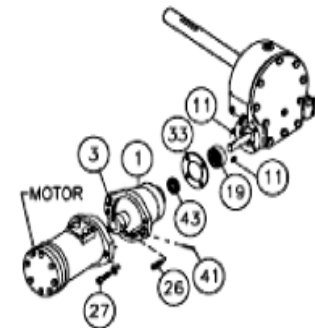
11. Apply grease to end of shaft, opposite gear. Apply grease to bushing in gear housing #8. Place greased end of shaft through thrust washer #48 and bushing in gear housing #8. Place gasket #34 onto gear housing cover #4. Apply grease to gear end of shaft and cover bushing. Place cover onto shaft and secure to housing with ten #23 capscrews. Tighten capscrews to 8 ft. lbs. (10.8 Nm) each.



12. Press bearing #19 onto worm #16. NOTE: Be sure that thick shoulder of bearings outer race (side with manufacturer's name and part number) is out, away from worm threads. Press bearing and worm into gear housing. Slip new gasket #33 onto brake housing. Use four capscrews #25 to secure brake housing to gear housing. TIGHTEN CAPSCREWS TO 8 FT. LBS. (10.8 Nm.) EACH. See re-assembling and checking the brake on page 13 to complete brake assembly.

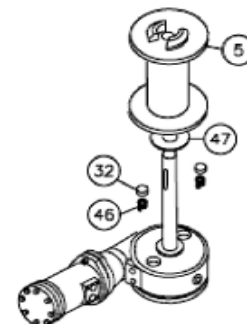


13. Press bearing #19 onto worm and into housing. NOTE: Be sure that thick shoulder of bearings outer race (side with manufacturer's name and part number) is out, away from worm threads. Place gasket #33 onto adapter #1. Attach adapter to gear housing using four (4) capscrews #26. TIGHTEN CAPSCREWS TO 12 FT. LBS. (16.3 Nm.) EACH. Insert keys #11 into keyways of worm shaft. Slide tapered end of coupling #3 over end of worm shaft. Be sure roll pin #41 is in coupling.



Place motor shaft, with key in keyway, into coupling. Secure motor to adapter, using two (2) capscrews #27 and lockwashers. TIGHTEN CAPSCREWS TO 75 FT. LBS. (102 Nm.) EACH.

14. Place winch with gear housing cover down on work bench. Drum shaft should be in vertical position. Slide thrust washer #47 over drum shaft and slide downward until washer rests on gear housing. Set springs #46 into pockets of gear housing with drag brakes #32 on top of springs. Slide drum assembly #5 onto drum shaft with drum jaws upward.



15. Slide spacer #48 over end of drum shaft. Press drum downward to compress drag brake springs in gear housing. Insert keys #35 into keyways with sharp edge of keys pointing outward and notched end of keys upward. A rubber or brass mallet will be needed to gently tap keys into position.

Apply grease to keys and end of shaft. Place jaw clutch #2 over end of shaft and slide jaw clutch over keys.

NOTE: Be sure that tapped hole on side of jaw clutch is on same side of shaft as the ball detents. Insert ball poppet #18, spring #45, & setscrew #28 into tapped hole of jaw clutch.

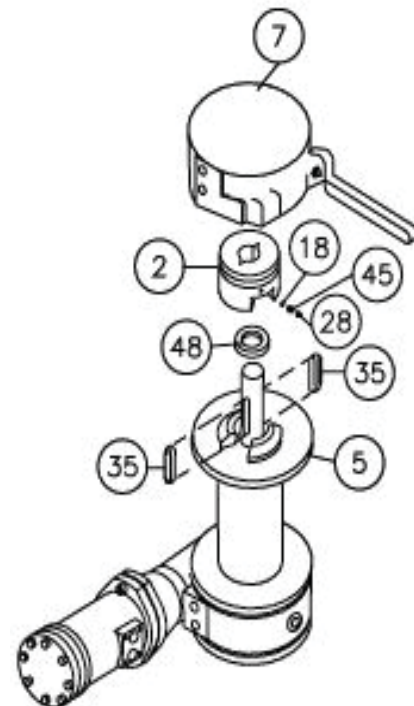
If jaw clutch and/or drum shaft have been replaced two detents for ball must be drilled as follows:

Slide jaw clutch over end of shaft. Align jaws of clutch with jaws of drum. Use a 1/4" dia. drill, using hole in jaw clutch as a guide, to drill a 1/8" deep detent in shaft. Slide jaw clutch upward 3/4" and drill 2nd detent.

Apply grease to bushing in clutch housing assembly #7.

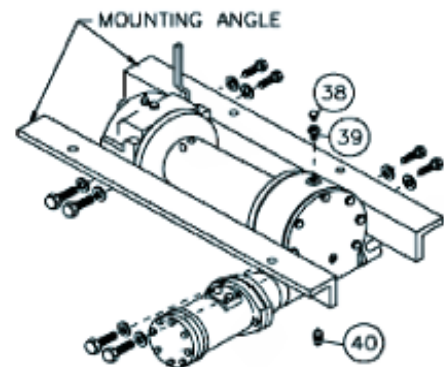
Set clutch housing onto end of drum shaft. Pull jaw clutch upward, toward clutch housing, enough to allow yoke in clutch housing to fit properly in groove around jaw clutch. Slide clutch housing assembly and jaw clutch downward into place.

The setscrew should be tightened enough to allow ball, when placed in ball detents, to sufficiently lock jaw clutch "IN" and "OUT".



16. Attach mounting angles using hardware shown. Torque capscrews to 34 ft. lbs. (46 Nm) each. Insert plug #40 into bottom of gear housing. Permatex may be applied to threads to prevent leakage.

Pour 1 pint of SAE 140 EP gear oil into housing through hole in top of housing. Insert relief fitting #38 into reducer #39. Reducer should then be placed into hole on top of gear housing. Tighten fitting and reducer secur



## ADJUSTING THE OIL COOLED WORM BRAKE

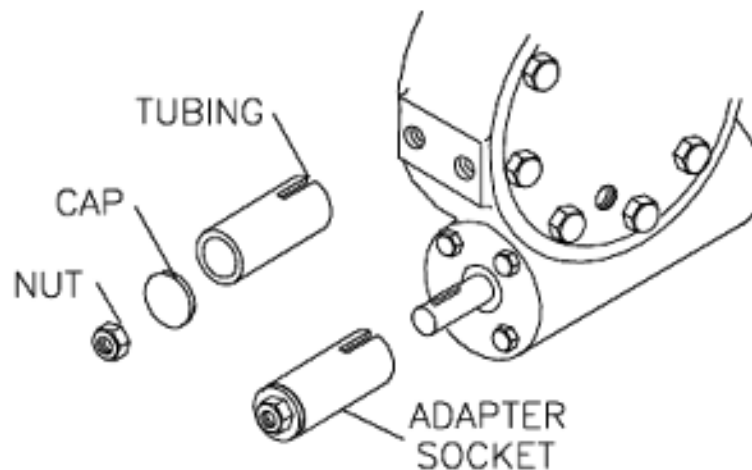
The oil-cooled, fully adjustable, automatic brake operates in the worm housing lubricant, all parts being submerged in oil. When the brake wears to the point that the load begins to drift, the brake can be adjusted as follows:

1. Loosen the lock nut on the adjusting screw.
2. Tighten the brake by turning the adjusting screw clockwise. CAUTION: Only  $\frac{1}{4}$  turn is usually required to adjust the brake. Over-tightening can cause overheating, and damage to the brake parts. Tighten the lock nut after adjustment is completed.

If the brake does not respond to adjustment then a new leaf spring and brake disc is needed.

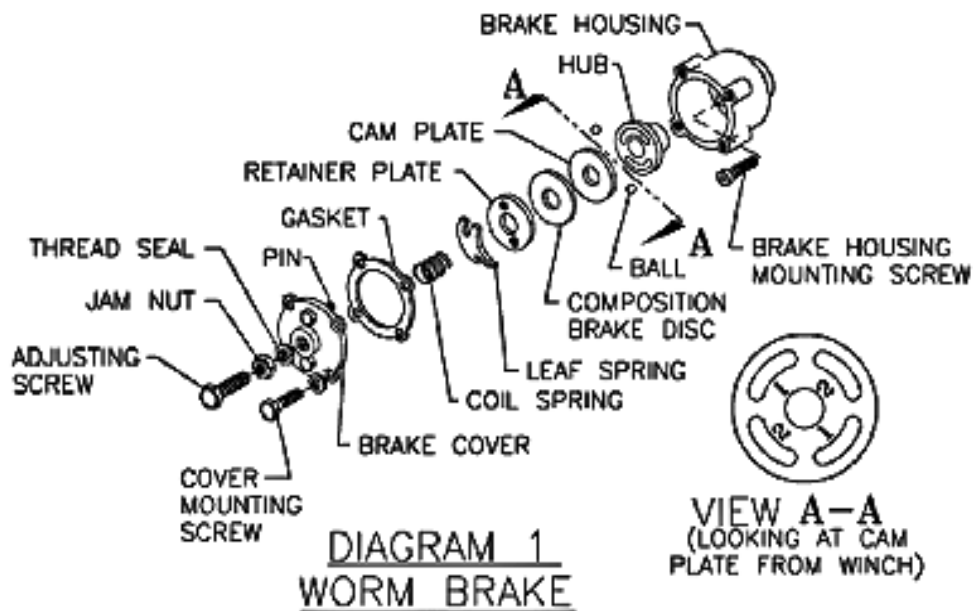
A torque wrench can be equipped with a special adapter to fit the input shaft (worm) of the winch. The adapter can be made by welding a nut to the end of a piece of tubing as shown below.

After welding the cap and nut to the tubing, slot the tubing as shown. This will allow the special adapter to slide over the keyway and will then act as a large socket. A torque wrench can then be used to apply the proper torque. Turn the torque wrench so that the drum turns in the spool out direction or lowering direction. The torque rating for the Model HDG-350 should be 9 to 15 ft. lbs. If the torque wrench does not show the proper value as it turns, then the worm brake adjusting bolt should be turned clockwise  $\frac{1}{4}$  turn to increase the torque setting. Each time the adjusting bolt is turned, check the torque reading. Continue this procedure until the proper torque reading is achieved. Then tighten the lock nut.



## SERVICING OF THE OIL COOLED BRAKE

1. Back off the lock nut, then the adjusting screw, both two turns or more by turning them counter-clockwise.
2. Remove the cover mounting screws.
3. Remove the cover along with coil spring and leaf spring.
4. Remove the retainer plate, composition brake disc, cam plate and balls.
5. Inspect parts as follows:
  - a. Composition brake discs are 1/8" thick when new. Replace if thinner than 0.080" or if surfaces are glazed or burnt.
  - b. Inspect the flat, ground surface of the cam plate and retainer plate for glazing, warpage, or other damage. Glazing can be removed by scraping carefully.
  - c. Inspect the leaf spring. It should be bowed 1/8".



## **RE-ASSEMBLING AND CHECKING THE BRAKE**

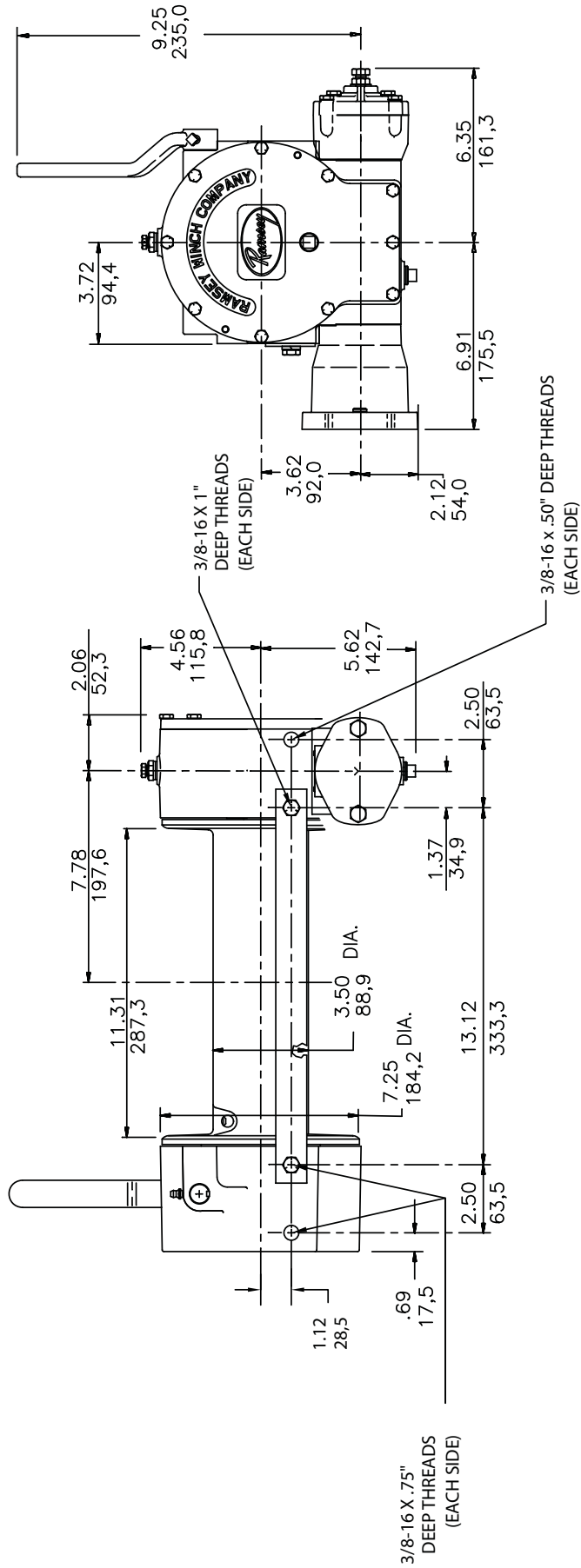
1. Press brake hub into place over worm shaft and key.
2. Assemble balls into #1 slots of cam. Use stiff grease to hold balls into place and slide cam over end of worm. Be sure that balls are secure, between cam slots and hub slots.
3. Install brake disc.
4. Install retainer plate, smooth side toward brake disc.
5. Install the gasket on the cover with a small amount of grease or sealer
6. The coil spring goes over the adjusting screw on the inside of the cover.
7. Install the notches of the leaf spring on the pins protruding through the cover. The hollow side of the leaf spring goes toward the brake.
8. Install brake housing cover, making sure the protruding pins go through the leaf spring and into the holes on the retainer plate. Tighten capscrews to 7-8 ft. lbs.
9. Bolt cover into place with the mounting screws. Install drain plug and add 1 pint of SAE 140 EP oil.
10. Turn winch in the reel in direction at least one turn of the input shaft.
11. Turn the adjusting screw in until it is finger tight.

## **TEST FOR PROPER BRAKE ASSEMBLY**

After the brake has been adjusted to the proper torque setting (See page 11), disengage clutch. Start vehicle engine and run winch in the reel in direction. Allow winch to run in this direction for one minute.

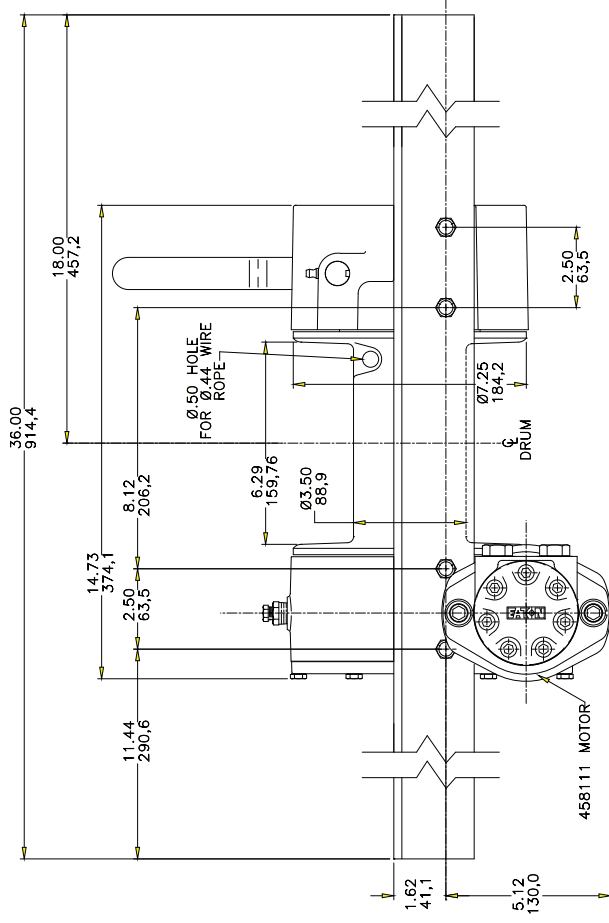
Place your hand on the brake housing. If housing is not hot to the touch then run winch in the reverse direction (cable out) for one minute. Brake housing should begin to heat.

When these conditions exist, proper installation has been made. If heating becomes noticeable when running the winch in forward rotation (reel in direction) the brake should be disassembled. When disassembled, place the brake balls in the alternate set of slots in the cam plate, then carefully follow the instructions for reassembling and checking the brake.

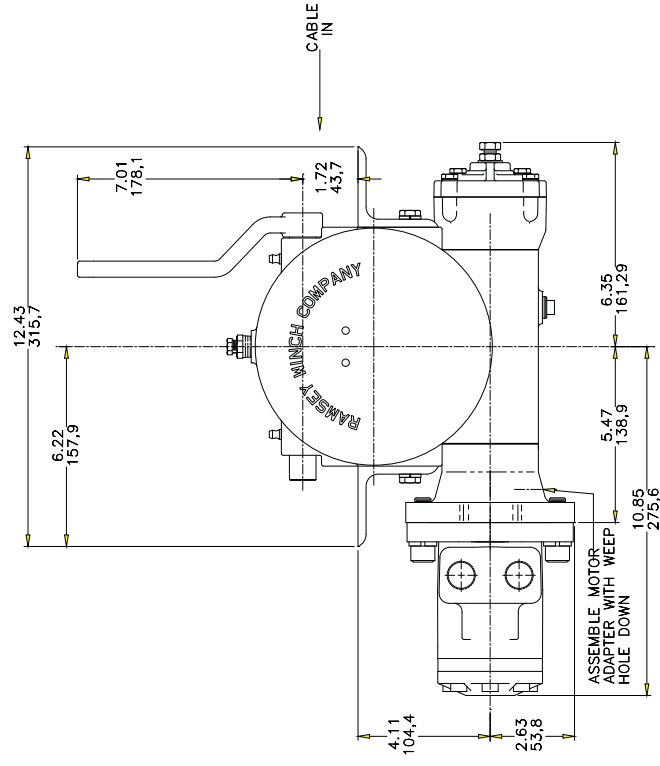


DIMENSIONS SHOWN ARE INCHES OVER MILLIMETERS

## MODEL HDG-350 LEVER



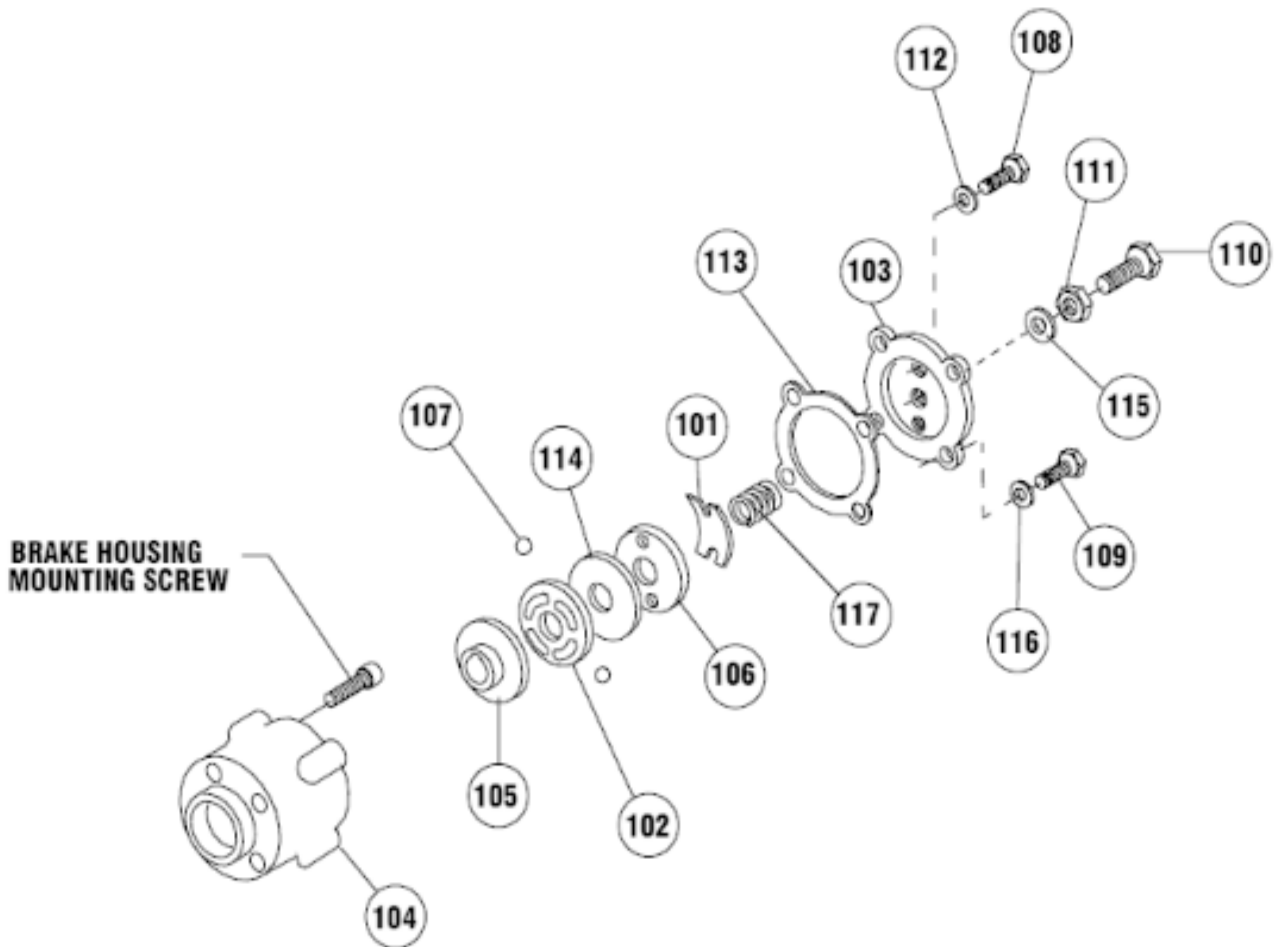
F.O.L.S. MOUNTING  
BRAKE BALLS IN 2

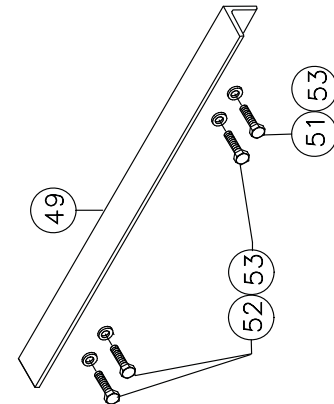
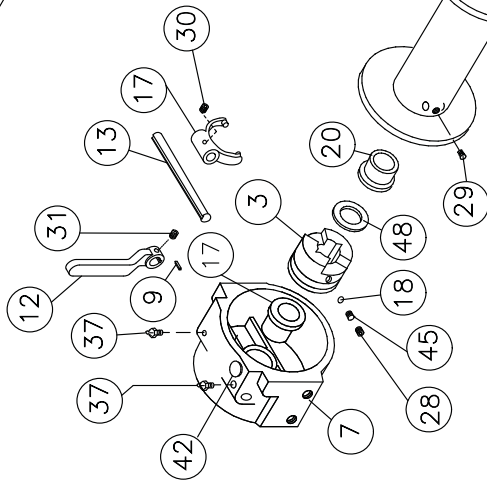
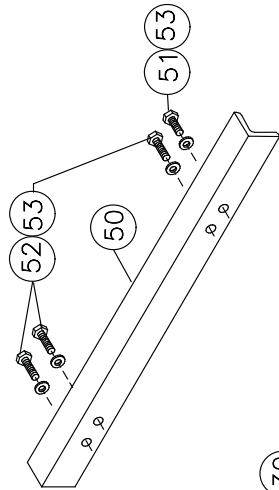


DIMENSIONS SHOWN ARE INCHES OVER MILLIMETERS

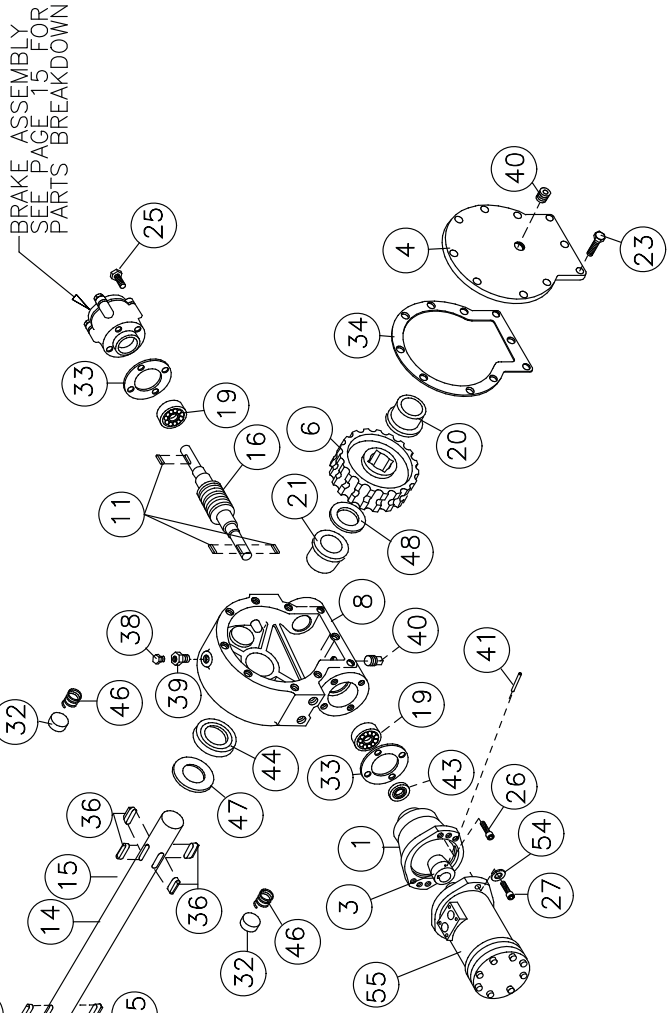
MODEL HDGY-350 LEVER  
F.O.L.S

ITEM NO	QTY	PART NO	DESCRIPTION
101	1	306034	SPRING - FLAT
102	1	314008	CAM PLATE
103	1	328128	COVER
104	1	338007	HOUSING BRAKE
105	1	340002	HUB
106	1	352022	RETAINER PLATE
107	2	400003	BALL
108	2	414021	CAPSCREW 1/4-20NC X 1" HX HD GR 5 NYLOCK
109	4	414039	CAPSCREW 1/4-20NC X 1" HX HD GR 5
110	1	414224	CAPSCREW 3/8-16NC X 1-1/2" HX HD GR 5 ALL-THRD
111	1	418036	NUT 3/8-16NC HX JAM
112	2	418154	WASHER - FLAT 1/4 ALUM
113	1	442189	GASKET
114	1	474001	PLATE THRUST
115	1	486069	THREAD SEAL
116	4	486070	THREAD SEAL
117	1	494007	SPRING





16



## PARTS LIST MODEL HDG-350

ITEM	QTY	PART NO.	DESCRIPTION	ITEM	QTY	PART NO.	DESCRIPTION
1	1	300057	ADAPTER	29	1	416059	SETSCREW 3/8-16NC X 1/2 LG SOC HD LESS
2	1	324161	JAW CLUTCH	30	1	416084	SETSCREW 1/4-20NC X 1/2
3	1	324500	COUPLING	31	1	416109	SETSCREW 5/16-18NC X 1/2
4	1	328134	COVER	32	2	438014	DISC - BRAKE
5	1	332184	DRUM	33	2	442184	GASKET
	1	332007	"Y" DRUM	34	1	442205	GASKET
6	1	334179	GEAR - R.H. 30:1	35	2	450006	KEY - BARTH
7	1	338003	HOUSING - CLUTCH	36	4	450016	KEY - BARTH
8	1	338273	HOUSING - GEAR	37	2	456006	FITTING - LUBE
9			NOT USED	38	1	456008	FITTING - RELIEF
10	1	342024	KEY	39	1	468002	REDUCER
11	3	342027	KEY	40	2	468011	PIPE PLUG
12	1	344008	LEVER	41	1	470033	SPIROL PIN
13	1	356902	SHIFTER SHAFT	42	1	472013	PLASTIC SEAL
14	1	357487	SHAFT - DRUM "STD"	43	1	486009	OIL SEAL
15	1	357488	SHAFT - "Y" DRUM	44	1	486017	OIL SEAL
16	1	368202	WORM - R.H. 30:1	45	1	494001	SPRING
17	1	370055	YOKE	46	2	494002	SPRING
18	1	400001	BALL - POPPET	47	1	518014	THRUST WASHER
19	2	402002	BEARING - BALL	48	2	518015	THRUST WASHER
20	4	412003	BUSHING	49	1	303076	ANGLE
21	1	412097	BUSHING		1	303134	ANGLE - "Y" DRUM (BRK SIDE)
22			NOT USED	50	1	303077	ANGLE
23	10	414038	CAPSCREW 1/4-20NC X 3/4 LG HX HD GR 5		1	303135	ANGLE - "Y" DRUM (MTR SIDE)
24			NOT USED	51	2	414275	CAPSCREW 3/8-16NC X 7/8 LG HX HD GR5
25	4	414839	CAPSCREW 1/4-20NC X 7/8" BUTTON HEAD	52	6	414282	CAPSCREW 3/8-16NC X 1-1/4 LG HX HD GR5
26	4	414842	CAPSCREW 1/4-20NC X 1-3/4 LG SOC HD L/W	53	8	418177	LOCKWASHER 3/8
27	2	414952	CAPSCREW 1/2-13NC X 1-1/2 LG SOC HD Z/P	54	2	418218	LOCKWASHER 1/2
28	1	416040	SETSCREW 5/16-18NC X 1/4 HX SOC HD	55	1	458111	MOTOR

**RAMSEY WINCH INDUSTRIAL WINCH  
LIMITED WARRANTY**

**1.1 Scope of Warranty Coverage.** Upon the terms and subject to the conditions set forth in this limited warranty:

- (a) RAMSEY WINCH (referred to herein as “**RAMSEY WINCH**” or the “**Manufacturer**”) warrants to each initial end user customer (a “**Purchaser**”) of a new industrial winch together with any accessories manufactured and sold directly from RAMSEY WINCH (the “**Product**”) that the Product shall be free from defects in material and workmanship, under normal working and service conditions, for a period of eighteen (18) months from the date the Product is shipped from RAMSEY WINCH. (the “**Warranty Term**”). A Purchaser shall be eligible for an additional eighteen (18) months of coverage in addition to the Warranty Term (also referred to as the “**Standard (+) PLUS benefit**”) only if the Purchaser (i) complies with Section 1.2(a) and (ii) registers the Product during the Warranty Term at [myproduct.ramseywinch.com](http://myproduct.ramseywinch.com).
- (b) Notwithstanding the foregoing, this warranty does not cover components damaged by accident, abuse, misuse, neglect, untrained operators, collision, overloading, modification, disassembly, rework, misapplication, improper installation, lack of lubrication or maintenance, or improper service. This warranty does not cover the paint or material finish, rope (wire or synthetic), removal or reinstallation of the winch, or normal wear and tear and loss of functionality due to aging of the Product (which may include but is not limited to bearings, bushings, seals, O-rings, gaskets, brake material, motor brushes, electrical cables and more).

**1.2 Eligibility of Warranty Coverage.**

- (a) A Purchaser shall be eligible for warranty coverage under this Limited Warranty during the Warranty Term only if:
  - (i) Prior to placing a Product in service, and throughout use of the Product during the Warranty Term, the Purchaser provides (or causes to be provided) proper storage such that foreign objects (e.g. rain or debris) cannot enter any Product through entry ports which are normally closed during operation.; and
  - (ii) The Purchaser maintains, or causes to be maintained, the Product according to commercially reasonable standards and utilizes the Product for the purposes for which it was created; and
  - (iii) No repairs or alterations have been made by any party other than RAMSEY WINCH, including Purchaser, unless otherwise authorized in writing by RAMSEY WINCH.

**1.3 Transferability of Warranty.**

- (a) This warranty is transferable only from the Purchaser to the first subsequent transferee (the “**Transferee**”) of the Product from Purchaser upon (i) written notification to RAMSEY WINCH and (ii) registration of the transfer, both within 30 days of such Product transfer.
- (b) Upon satisfaction of transfer requirements set forth in Section 1.3(a), the Transferee shall succeed to all the rights and obligations of the Purchaser set forth in this Limited Warranty.

**1.4 Certain Limitations on Scope of Warranty Service.**

- (a) Any obligation of RAMSEY WINCH under this warranty, statutory or otherwise, is limited to the repair of the Product, at its factory or Authorized Service Centers. Notwithstanding the foregoing, if field service or repair is performed by RAMSEY WINCH at the request of the Purchaser and no defect is found with material or workmanship of the Product, the Purchaser shall compensate RAMSEY WINCH for its time and expenses within thirty (30) days of delivery of an invoice relating to the same. If repair is determined by RAMSEY WINCH in its sole, absolute and uncontrolled discretion to be impossible or impractical, then RAMSEY WINCH may satisfy this warranty by replacing the Product. RAMSEY WINCH will not provide any cash payment or credits for defective materials or workmanship.

- (b) Purchaser shall be responsible for any and all freight charges for any Product receiving warranty service under this limited warranty. Any travel time, transportation charges, freight charges, or similar costs incurred by RAMSEY WINCH in connection with the replacement or repair of defective parts, shall, be the responsibility of the Purchaser. If applicable, RAMSEY WINCH shall invoice Purchaser for the total amount of such charges within sixty (60) days of fulfilling its duties under this warranty, payable within thirty (30) days of delivery of such invoice. In no event shall RAMSEY WINCH be liable for bills for service, labor or other expenses that have been incurred by the Purchaser without approval or prior authorization by RAMSEY WINCH for inspection, maintenance, or repair of the Product.
- (c) If a Product is found to be operable upon inspection, the Product, at Purchaser's election, may be either (1) returned to the Purchaser with a service charge from RAMSEY WINCH for inspection, cleaning, and routine replacement of all rubber components and any other parts that show wear; or (2) RAMSEY WINCH can dispose of the product safely.

1.5 **Limitations of Liability.** RAMSEY WINCH shall in no event be liable for punitive, special or consequential damages relating to the Product or this Warranty. RAMSEY WINCH makes no warranty in respect to third-party accessories, upgrades, or additions to the Product.

1.6 **Improving Product.** RAMSEY WINCH reserves the right to improve the Product through changes in design or materials as it may deem desirable or necessary without being obligated to incorporate, upgrade, or otherwise modify previously manufactured products.

1.7 **Limitations of Warranty.**

- (a) THE WARRANTY SET FORTH ABOVE IS THE ONLY EXPRESS WARRANTY. RAMSEY WINCH HEREBY DISCLAIMS AND EXCLUDES ANY OTHER EXPRESS, IMPLIED, OR STATUTORY WARRANTIES, ARISING BY OPERATION OF LAW, COURSE OF DEALING, COURSE OF PERFORMANCE, USAGE, OF TRADE, OR OTHERWISE, INCLUDING, WITHOUT LIMITATION, ANY WARRANTIES OF MERCHANTABILITY, FITNESS FOR A PARTICULAR PURPOSE, AND INTELLECTUAL PROPERTY RIGHTS OF A THIRD PARTY.
- (b) ANY IMPLIED WARRANTY WHICH BY LAW MAY NOT BE EXCLUDED IS LIMITED IN DURATION TO ONE (1) YEAR FROM THE DATE OF ORIGINAL RETAIL PURCHASE OF THE PRODUCT.
- (c) This warranty gives you specific legal rights, and you may also have other rights which vary from jurisdiction to jurisdiction.
- (d) This warranty is valid only in the U.S.A. and Canada. For warranty outside the U.S.A. and Canada contact your nearest Ramsey Winch Distributor.

1.8 **No Modifications to Warranty.** No RAMSEY WINCH dealer, distributor, agent or employee is authorized to make any modification, extension or addition to this warranty.

1.9 **How to Apply for Warranty Coverage.**

All claims are handled by contacting your nearest Ramsey Winch Distributor. For questions, please contact customer support: [rwcustomersupport@ramseyindustries.com](mailto:rwcustomersupport@ramseyindustries.com).

Visit [Dealer Locator - Ramsey Winch](#) for Ramsey Winch Distributor locations and contact information.

Additional warranty, service support, product information, and parts information can be found on [www.ramseywinch.com](http://www.ramseywinch.com).

