

# TIMBERLINE *series*

# TERRAIN WINCH 4,000 lbs

## Features and Benefits

- Planetary
- Hydraulic
- As Low As 4 lbs Free-Spool Line Pull
- Field Adjustable Drag Brake
- Compatible For Use With Synthetic Rope or Wire Cable (Diameter 5/16", 3/8", and 7/16")
- Option: Short Drum or Standard Drum
- Adaptable Clutch Handle

**LOW FREE-SPOOL  
LINE PULL!**



Short and Standard Drums								
Diameter of Rope 5/16"	Layer of Rope	Unit	1	2	3	4	5	6
	Short / Standard	lb	4551	3910	3427	3050	2748	2501
	Drums Rated Line Pull	kg	2064	1774	1554	1383	1246	1134
	Short Drum Rope	ft						
	Capacity	m						
	Standard Drum Rope	ft						
	Capacity	m						



Diameter of Rope 3/8"	Layer of Rope	Unit	1	2	3	4	5
	Short / Standard	lb	4477	3751	3228	2832	2523
	Drums Rated Line Pull	kg	2031	1701	1464	1285	1144
	Short Drum Rope	ft					
	Capacity	m					
	Standard Drum Rope	ft					
	Capacity	m					

Diameter of Rope 7/16"	Layer of Rope	Unit	1	2	3	4
	Short / Standard	lb	4406	3605	3050	2644
	Drums Rated Line Pull	kg	1999	1635	1383	1199
	Short Drum Rope	ft				
	Capacity	m				
	Standard Drum Rope	ft				
	Capacity	m				

Terrain 4000 lbs	
Rated Line Pull (Low Speed)	4,000 lb (1814 kg)
Gear Reduction	5.07:1
Motor	6.0 cu in
Pressure	2500 psi
Weight (Without Cable)	154 lb (70 kg) Standard Drum
	142 lb (64 kg) Short Drum



4707 N Mingo Rd,  
Tulsa, OK 74117

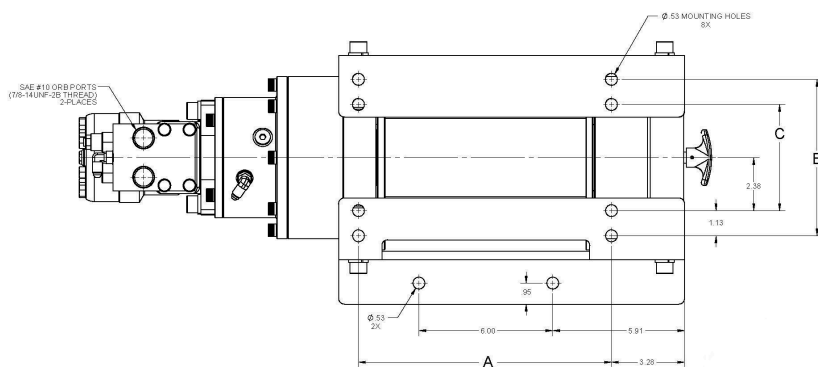
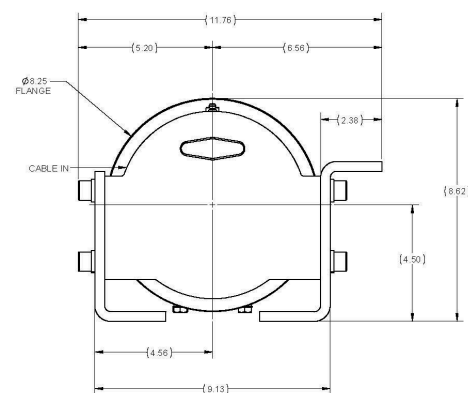
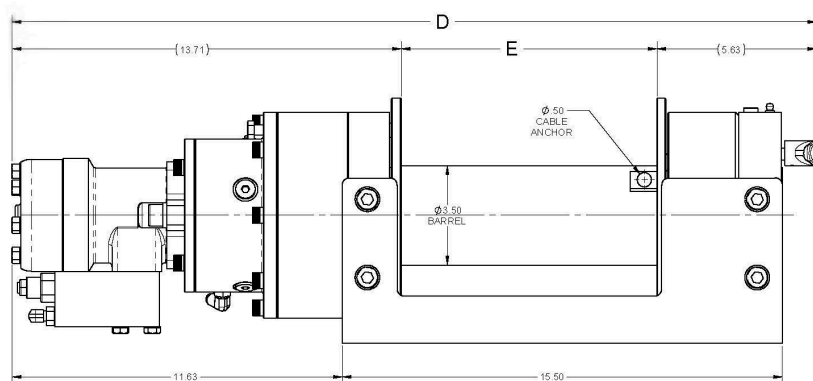


1-800-777-2760



rwcustomersupport@ramseyindustries.com

# WHEN THE LOAD FIGHTS BACK WE FIGHT HARDER



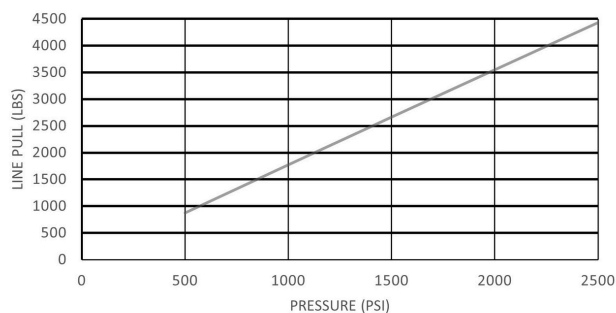
## STANDARD

A = 11.34"  
B = 7.00"  
C = 4.75"  
D = 28.34"  
E = 9.00"

## SHORT

A = 8.34"  
B = 7.00"  
C = 4.75"  
D = 25.34"  
E = 6.00"

PRESSURE vs LINE PULL



LINE SPEED vs FLOW

