

TIMBERLINE series

TERRAIN WINCH 4,000 lbs

Features and Benefits

- Planetary
- Hydraulic
- As Low As 4 lbs Free-Spool Line Pull
- Field Adjustable Drag Brake
- Compatible For Use With Synthetic Rope or Wire Cable (Diameter 5/16", 3/8", and 7/16")
- Option: Short Drum or Standard Drum
- Adaptable Clutch Handle

**LOW FREE-SPOOL
LINE PULL!**



| Short and Standard Drums | | | | | | | | |
|---------------------------|-----------------------|------|------|------|------|------|------|------|
| Diameter of Rope 5/16" | Layer of Rope | Unit | 1 | 2 | 3 | 4 | 5 | 6 |
| | Short / Standard | lb | 4551 | 3910 | 3427 | 3050 | 2748 | 2501 |
| | Drums Rated Line Pull | kg | 2064 | 1774 | 1554 | 1383 | 1246 | 1134 |
| | Short Drum Rope | ft | 224 | | | | | |
| | Capacity | m | 68 | | | | | |
| | Standard Drum Rope | ft | 336 | | | | | |
| | Capacity | m | 102 | | | | | |



SCAN HERE

| Diameter of Rope 3/8" | Layer of Rope | Unit | 1 | 2 | 3 | 4 | 5 |
|-----------------------------|-----------------------|------|------|------|------|------|------|
| | Short / Standard | lb | 4477 | 3751 | 3228 | 2832 | 2523 |
| | Drums Rated Line Pull | kg | 2031 | 1701 | 1464 | 1285 | 1144 |
| | Short Drum Rope | ft | 155 | | | | |
| | Capacity | m | 47 | | | | |
| | Standard Drum Rope | ft | 233 | | | | |
| | Capacity | m | 71 | | | | |

| Diameter of Rope 7/16" | Layer of Rope | Unit | 1 | 2 | 3 | 4 |
|---------------------------|-----------------------|------|------|------|------|------|
| | Short / Standard | lb | 4406 | 3605 | 3050 | 2644 |
| | Drums Rated Line Pull | kg | 1999 | 1635 | 1383 | 1199 |
| | Short Drum Rope | ft | 144 | | | |
| | Capacity | m | 35 | | | |
| | Standard Drum Rope | ft | 114 | | | |
| | Capacity | m | 52 | | | |

| Terrain 4000 lbs | |
|-----------------------------|---|
| Rated Line Pull (Low Speed) | 4,000 lb (1814 kg) |
| Gear Reduction | 5.07:1 |
| Motor | 6.0 cu in |
| Pressure | 2500 psi |
| Weight (Without Cable) | 154 lb (70 kg) Standard Drum 142 lb (64 kg) Short Drum |



4707 N Mingo Rd,
Tulsa, OK 74117

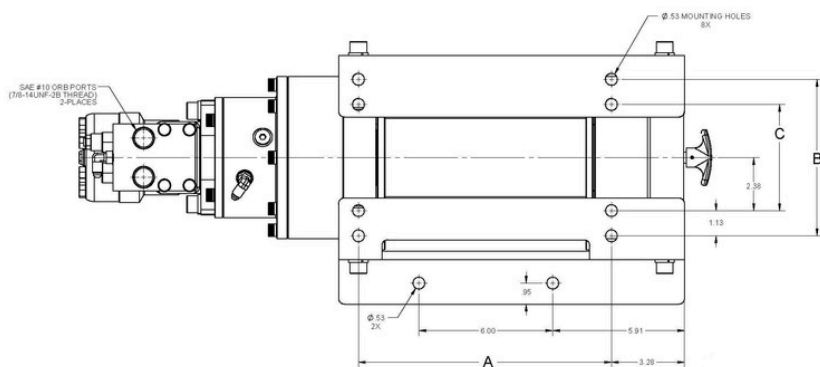
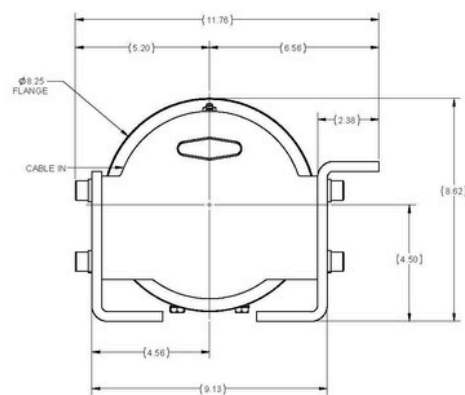
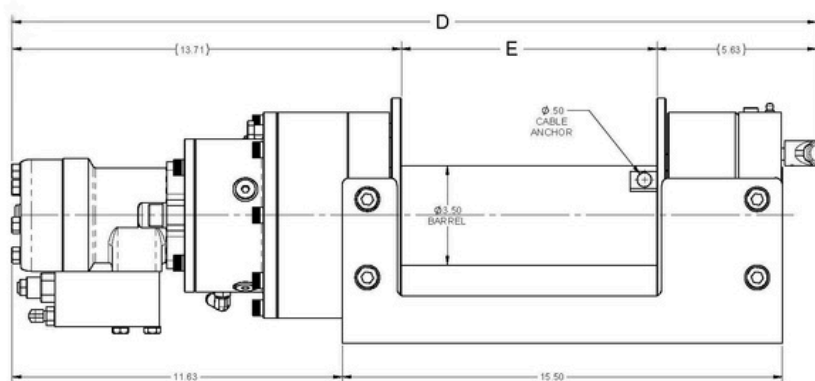


1-800-777-2760



rwcustomersupport@ramseyindustries.com

WHEN THE LOAD FIGHTS BACK WE FIGHT HARDER



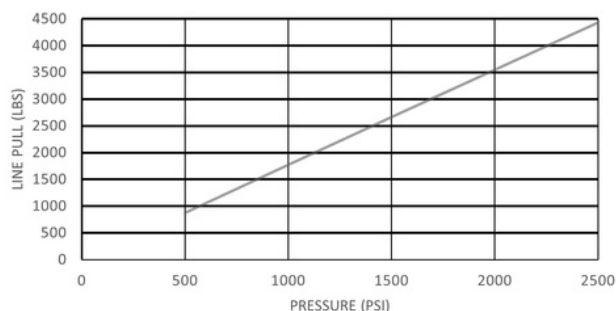
STANDARD

A = 11.34"
B = 7.00"
C = 4.75"
D = 28.34"
E = 9.00"

SHORT

A = 8.34"
B = 7.00"
C = 4.75"
D = 25.34"
E = 6.00"

PRESSURE vs LINE PULL



LINE SPEED vs FLOW

