

WILDCAT[®] WINCH SERIES

By **RAMSEY
WINCH[®]**

OPERATING, SERVICE AND MAINTENANCE MANUAL



WILDCAT 105K MODEL WC 105R 105,000 LB INDUSTRIAL WINCH



CAUTION: READ AND UNDERSTAND THIS MANUAL
BEFORE INSTALLATION AND OPERATION OF WINCH.
SEE WARNINGS!

TABLE OF CONTENTS

WARRANTY INFORMATION	1
SPECIFICATIONS	1
WARNINGS	1
HYDRAULIC SYSTEM REQUIREMENTS	2
CABLE INSTALLATION	3
CLUTCH OPERATION	4
WINCH OPERATION	4
MAINTENANCE	4
LUBRICATION TABLE	5
TROUBLE SHOOTING GUIDE	5
INSTRUCTIONS FOR DISASSEMBLY	6-13
HOSE HOOKUP	14
PARTS DRAWING	15
PARTS LIST	16
AIR CYLINDER	17
DIMENSIONAL DRAWING	18

RAMSEY HYDRAULIC PLANETARY WINCH MODEL WILDCAT 105K

PLEASE READ THIS MANUAL CAREFULLY

This manual contains useful ideas in obtaining the most efficient operation from your Ramsey Winch, and safety procedures one needs to know before operating a Ramsey Winch. Do not operate this winch until you have carefully read and understand the "WARNINGS" and "OPERATION" sections of this manual.

WARRANTY INFORMATION

Ramsey Winches are designed and built to exacting specifications. Great care and skill go into every winch we make. If the need should arise, warranty procedure is outlined on the back of your self-addressed postage paid warranty card. Please read and fill out the enclosed warranty card and send it to Ramsey Winch Company. If you have any problems with your winch, please follow instructions for prompt service on all warranty claims. Refer to back page for limited warranty.

PERFORMANCE										
APPROXIMATE WEIGHT:			2150 LBS							
WORKING PRESSURE:			2850 PSI							
CABLE DIAMETER:			1 1/8 INCH							
FLOW:			60 GPM							
LAYER	CABLE CAPACITY		LOW SPEED				HIGH SPEED			
			LINE PULL		LINE SPEED		LINE PULL		LINE SPEED	
	Ft	m	Lb	Kg	fpm	mpm	Lb	Kg	fpm	mpm
1	45	13	105000	47620	23	6.9	49000	22220	46	13.9
2	105	32	85900	38960	27	8.2	40000	18140	55	16.7
3	180	54	72600	32930	32	9.7	33900	15370	64	19.4
4	260	79	63000	28570	36	10.9	29400	13330	73	22.1
5	355	108	55500	25170	41	12.4	25900	11740	82	24.9
6	465	141	49700	22540	46	13.9	23200	10520	92	27.9

* These specifications are based on recommended wire rope of 1.125" Extra Improved Plow Steel Cable and a 9.6 cu. in. / Rev. motor.

NOTE: The rated line pulls shown are for the winch only. Consult the wire rope manufacturer for wire rope ratings.

WARNINGS:

CLUTCH MUST BE FULLY ENGAGED BEFORE STARTING THE WINCHING OPERATION.

DO NOT START WINCH MOTOR BEFORE ENGAGING CLUTCH.

DO NOT DISENGAGE CLUTCH UNDER LOAD.

STAY OUT FROM UNDER AND AWAY FROM RAISED LOADS.

STAND CLEAR OF CABLE WHILE PULLING. DO NOT TRY TO GUIDE CABLE.

DO NOT EXCEED MAXIMUM LINE PULL RATINGS SHOWN IN TABLE.

DO NOT USE WINCH TO LIFT, SUPPORT, OR OTHERWISE TRANSPORT PEOPLE.

A MINIMUM OF 5 WRAPS OF CABLE AROUND THE DRUM BARREL IS NECESSARY TO HOLD THE LOAD.

CABLE ANCHOR IS NOT DESIGNED TO HOLD LOAD.

BAND BRAKE IS NOT TO BE USED TO HOLD LOAD.

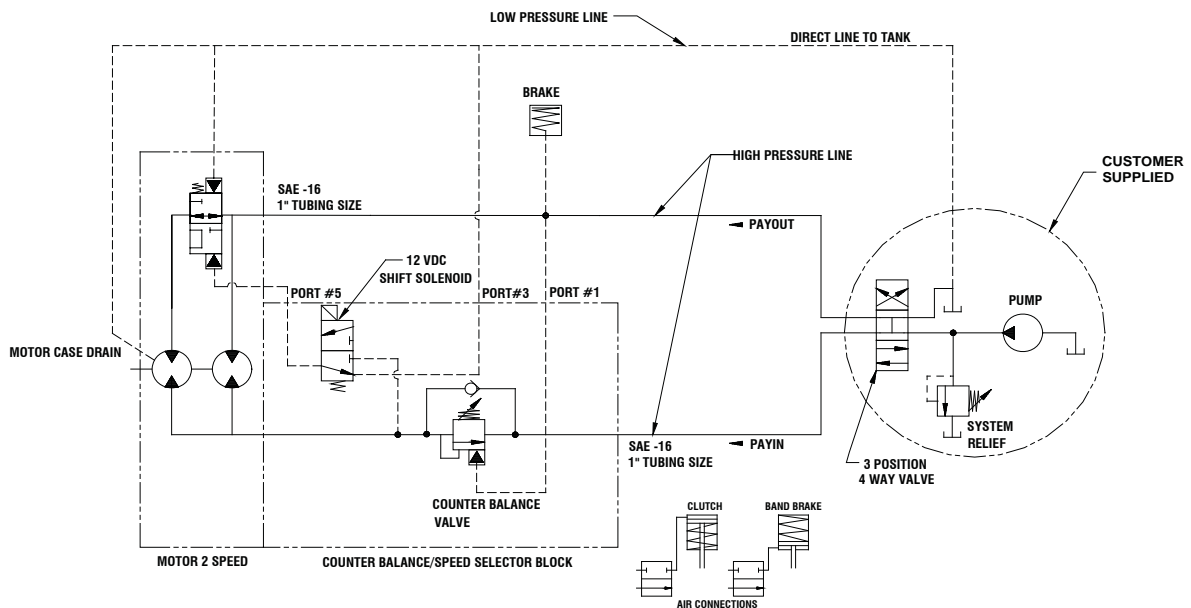
HYDRAULIC SYSTEM REQUIREMENTS & PERFORMANCE CHARTS

HYDRAULIC SYSTEM REQUIREMENTS

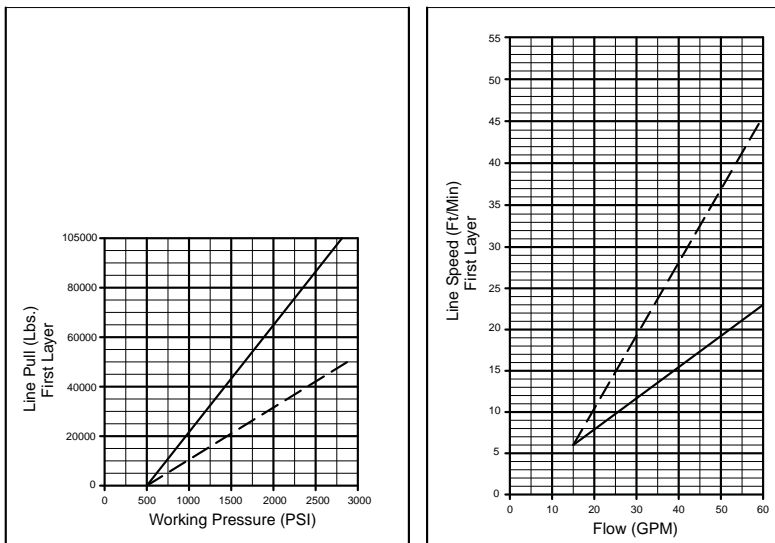
Refer to the performance charts, below, to properly match your hydraulic system to winch performance. The charts consist of:

(1) Line pull (lb.) first layer vs. working pressure (PSI) and (2) line speed, first layer (FPM) vs. gallons per minute (GPM). Performance based on a motor displacement of 9.0 cubic inches/rev with 60 GPM maximum flow rate. Motor has (2) 1"-12 SAE straight thread o-ring ports.

Note: A motor spool (open center) directional control valve is required for brake operation.



PERFORMANCE CHARTS

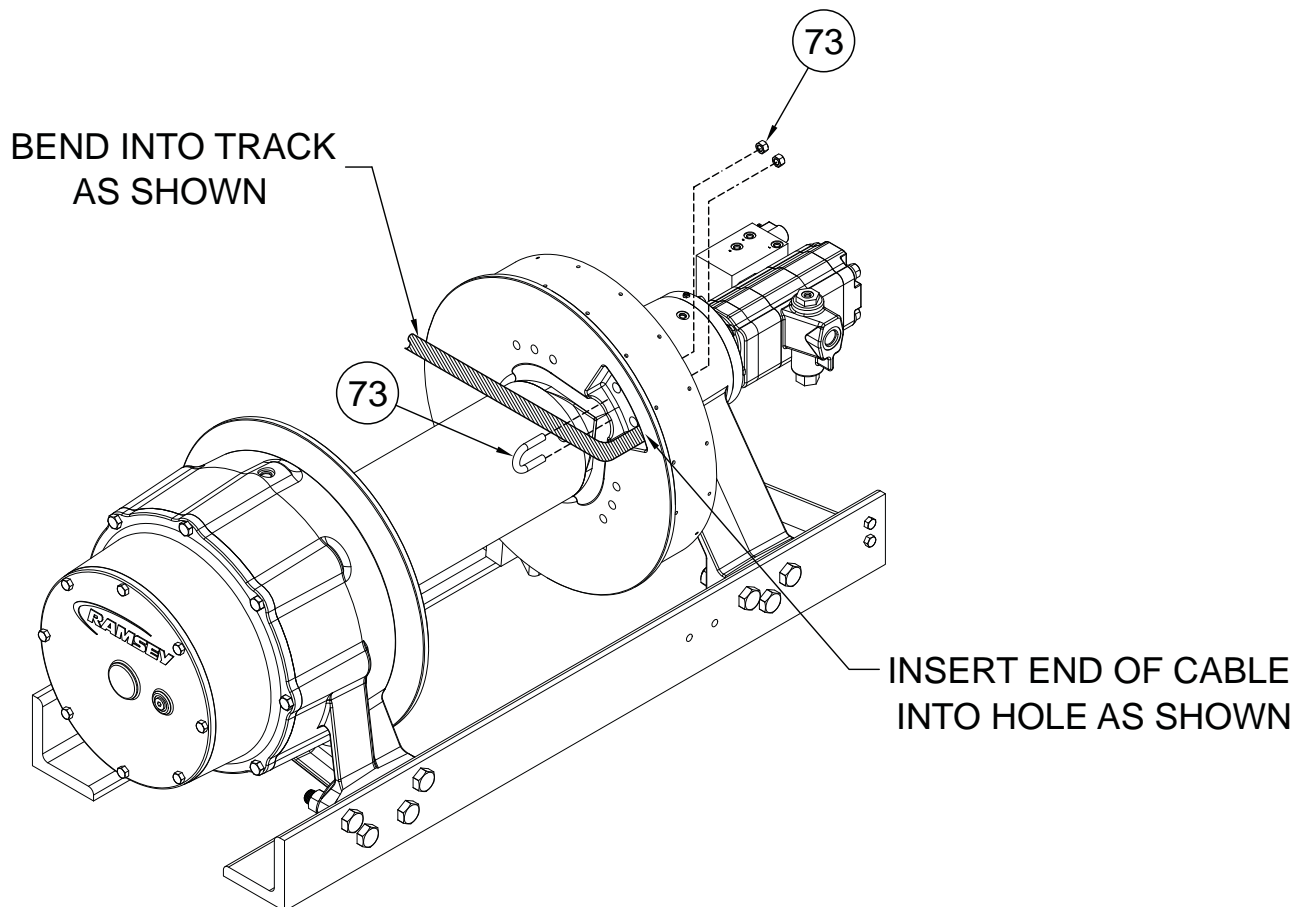


BASED ON 9.6 CU IN/REV MOTOR

CABLE INSTALLATION

CABLE INSTALLATION

1. Unwind cable by rolling it out along the ground to prevent kinking. Securely wrap end of wire rope, opposite hook, with plastic or similar tape to prevent fraying.
2. Place taped end of cable into hole on drum flange and bend into the track on drum flange. Secure using supplied u-bolt #73 and (2) nuts.
3. Carefully run the winch in the "reel-in" direction. Keeping tension on end of cable, spool all the cable onto the cable drum, taking care to form neatly wrapped layers.
4. After installing cable, band brake is used to prevent bird nesting while pulling out cable, when clutch is disengaged.



CLUTCH OPERATION

CLUTCH OPERATION

WARNING: CLUTCH MUST BE FULLY ENGAGED BEFORE STARTING THE WINCHING OPERATION.

To engage clutch:

1. Move clutch control to engage the clutch.
2. Run the motor in the cable out direction until the drum begins to turn.

WARNING: DO NOT DISENGAGE CLUTCH UNDER LOAD.

To disengage clutch:

1. Run the winch in the "cable out" direction until the load is off the cable.
2. Move the clutch control to disengage the clutch. The cable may now be spooled off.

WINCH OPERATION

The best way to get acquainted with how your winch operates is to make test runs before you use it. Plan your test in advance. Remember, you hear your winch, as well as see it operate; learn to recognize the sounds of a light steady pull, a heavy pull, and sounds caused by load jerking or shifting. Gain confidence in operating your winch and its use will become second nature with you.

The uneven spooling of cable while pulling a load is not a problem, unless there is a cable pileup on one end of drum. If this happens reverse the winch to relieve the load and move your anchor point further to the center of the vehicle. After the job is done you can unspool and rewind for a neat lay of the cable.

MAINTENANCE

Adhering to the following maintenance schedule will keep your winch in top condition and performing as it should with a minimum of repair.

Drum bushings are oil impregnated with synthetic oil. The drum bushings do not require additional grease.

A. WEEKLY

1. Check the oil level and maintain it to the oil level plug. If oil is leaking out, determine location and repair.
2. Check the pressure relief plug on the gear housing cover and the brake housing cover. Be sure they are not plugged.
3. Lubricate cable with light oil.
4. Apply a high quality lithium grease to clutch spline. Apply band brake to control drum. Declutch drum and apply grease to spline between clutch and drum.

B. MONTHLY

1. Check the winch mounting bolts. If any are missing, replace them and securely tighten any that are loose. Use grade 8 or better bolts.
2. Inspect the cable. If the cable has become frayed with broken strands, replace immediately.

C. ANNUALLY

1. Drain the oil from the winch annually or more often if winch is used frequently.
2. Refill the winch to the oil level plug with all purpose GL-5 oil, (see page 5) for gear lube compatible with your climate.
3. Inspect winch for damage and wear.

LUBRICATION TABLE AND TROUBLE SHOOTING GUIDE

LUBRICATION TABLE

Lubricant Description*	Temp Range F(C)		
	Min Ambient & Operating	Max Ambient	Max Operating
80W140 Synthetic	-25 (-32)	125 (52)	225 (107)
75W90 Synthetic	-40 (-40)	115 (46)	215 (102)
80W90 Conventional	-20 (-29)	100 (38)	180 (82)
85W140 Conventional	20 (6)	120 (50)	200 (93)
*Use API GL-5 or EP lubricants.			

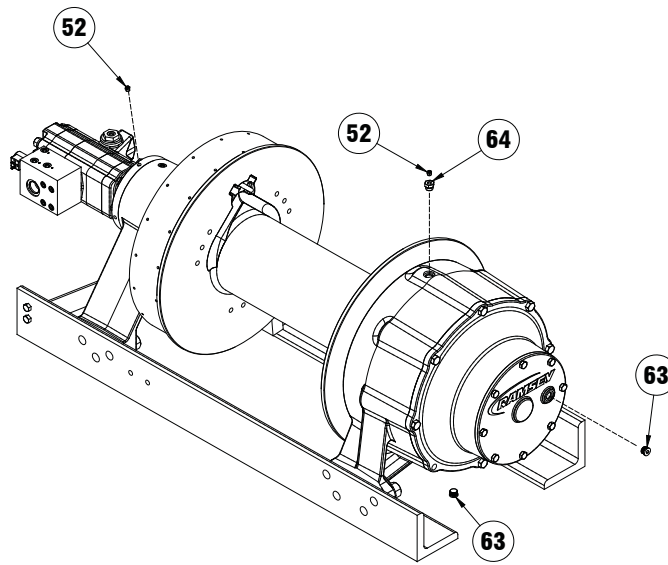
TROUBLE SHOOTING GUIDE

CONDITIONS	POSSIBLE CAUSE	CORRECTION
OIL LEAKS FROM WINCH	<ol style="list-style-type: none"> 1. Seals damaged or worn. 2. Too much oil. 3. Damaged o-rings. 4. Case drain not connected. 	<ol style="list-style-type: none"> 1. Replace seal 2. Drain excess oil. Refer to page 6. 3. Replace o-rings. 4. Connect case drain.
WINCH RUNS TOO SLOW	<ol style="list-style-type: none"> 1. Low flow rate. 2. Hydraulic motor worn out. 	<ol style="list-style-type: none"> 1. Check flow rate. Refer to HYDRAULIC SYSTEMS performance chart on page 2. 2. Replace motor.
CABLE DRUM WILL NOT FREESPOOL	<ol style="list-style-type: none"> 1. Clutch not disengaged 	<ol style="list-style-type: none"> 1. Check operation. Refer to Clutch Operation on page 4.
BRAKE WILL NOT HOLD	<ol style="list-style-type: none"> 1. Incorrect directional control valve. (cylinder spool, closed center). 2. Excessive hydraulic system back pressure. 3. Sprag clutch worn out. 	<ol style="list-style-type: none"> 1. Use only a motor spool (open center) directional control valve. 2. Reduce system back pressure to less than 100 psi. 3. Replace sprag clutch mechanism.
BRAKE WILL NOT RELEASE	<ol style="list-style-type: none"> 1. Brake line disconnected or blocked 	<ol style="list-style-type: none"> 1. Repair brake line.
WINCH WILL NOT OPERATE AT HIGH SPEED	<ol style="list-style-type: none"> 1. Shift solenoid not working. 	<ol style="list-style-type: none"> 1. Verify shift spool is energized.
WINCH OPERATES ERRATICALLY ON INHAUL	<ol style="list-style-type: none"> 1. Sprag hub is reversed. 	<ol style="list-style-type: none"> 1. Install sprag hub correctly.

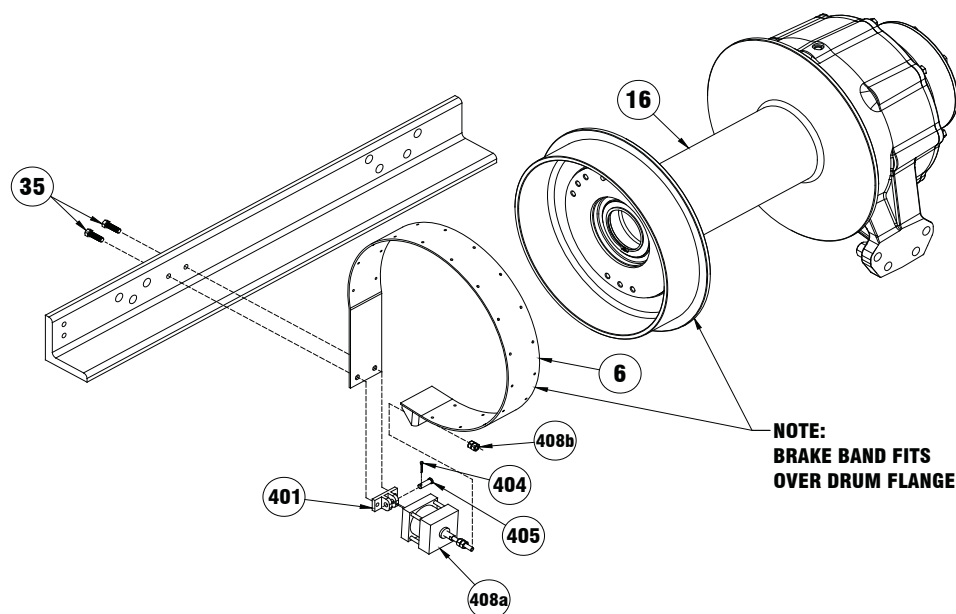
DISASSEMBLY INSTRUCTIONS

INSTRUCTIONS FOR DISASSEMBLY

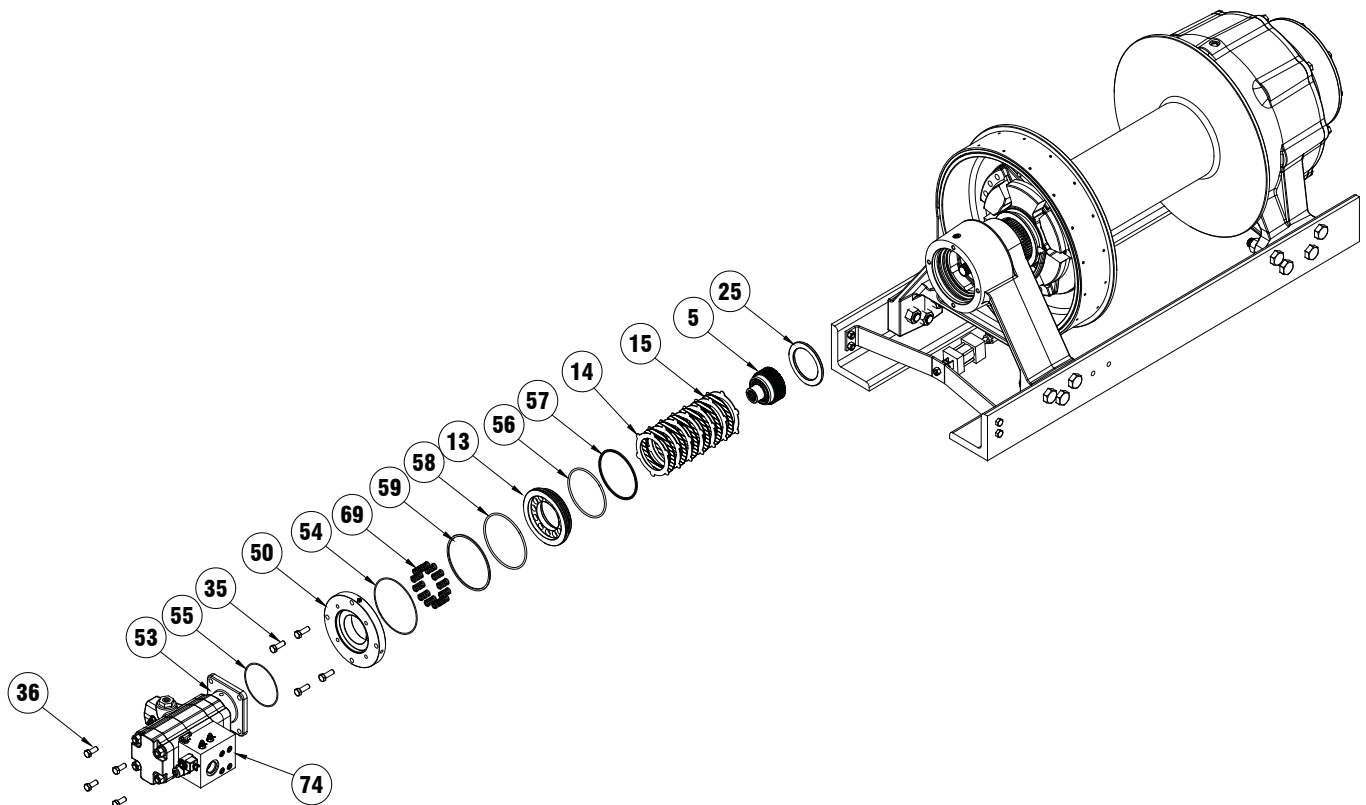
1. Remove wire rope from drum.
2. Drain oil from winch by removing (2) plugs #63, removing the lower plug first.
3. When replacing lubricant, use 496 oz of applicable lube for your climate from table on page 5, adding 16 oz at #52 and the remaining at #64.



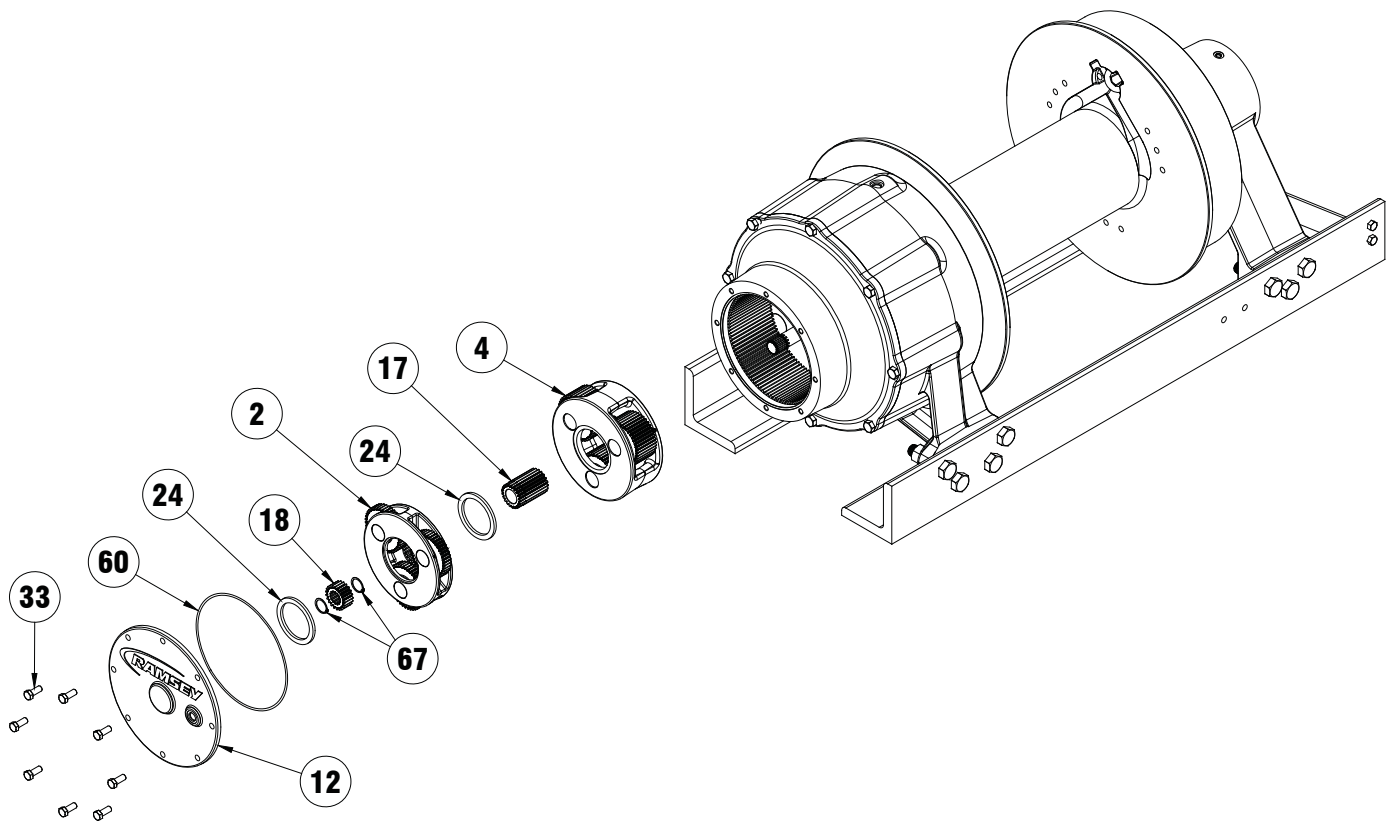
4. Remove (2) nuts #408b from air cylinder #408a. Air cylinder may now be removed. If needed, mounting bracket #401 may be removed by removing pin #404 from pin #405 and then sliding pin out of mounting bracket. Brake band #6 may be expanded over drum flange to barrel for easiest removal.



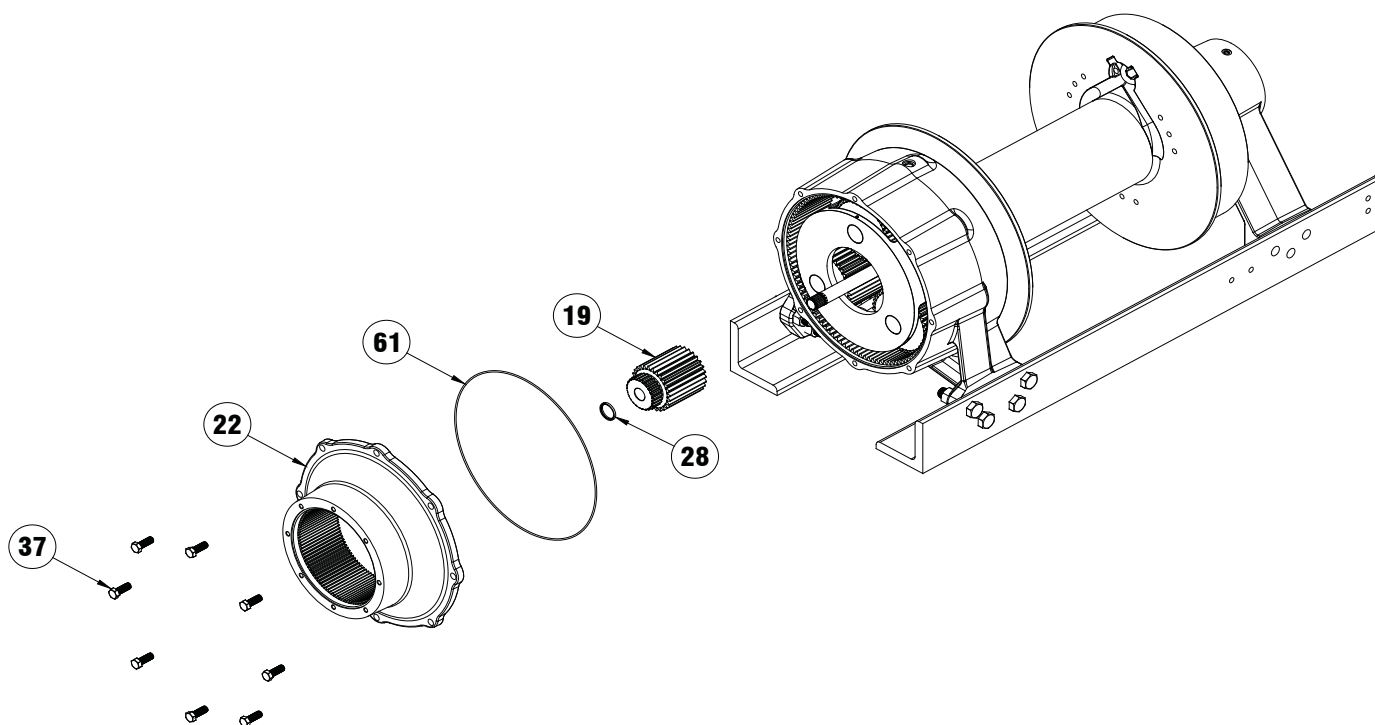
5. Remove motor #53 from winch by first disconnecting hydraulic lines (see page 17), solenoid wires, and then remove (4) bolts #36. O-ring #55 may now be removed.
6. Remove brake cover #50 by removing (4) bolts #35. The cover is spring loaded, use care when removing. Remove o-ring #54 then springs #69 may be removed; residual oil may be present in the brake housing.
7. Remove piston #13 including o-rings and backup rings #56, #57, #58, and #59 by using a momentary puff of compressed air into the brake port located on top of the end bearing. Capture the piston by placing a shop rag over the opening prior to using air.
8. Remove the sprag brake hub assembly #5, (7) stator plates #14, (6) disc brakes #15, and the spacer #25. The sprag brake hub assembly #5 is not a serviceable part, if damaged a replacement assembly should be ordered.



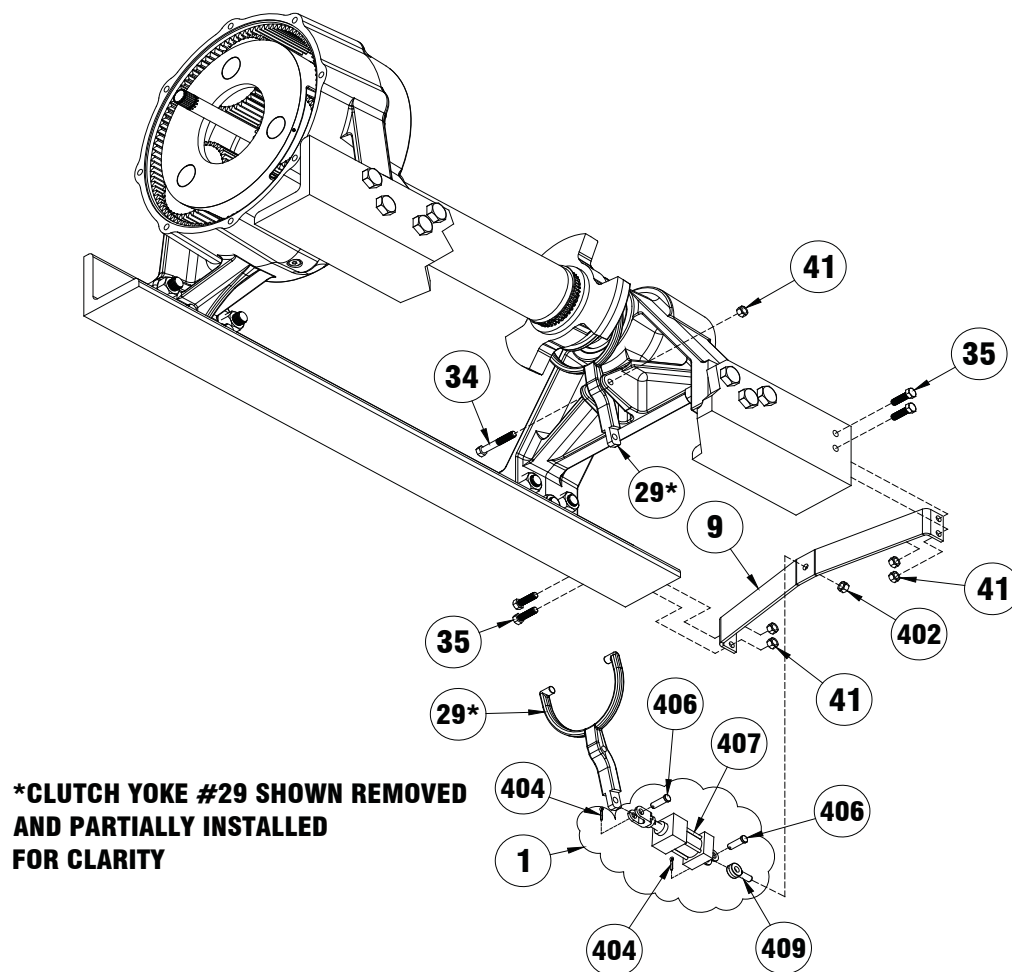
9. Remove (8) cover bolts #33, cover #12, and o-ring #60.
10. Remove snap ring #67, and sun gear #18.
11. The planetary carrier assembly #2 may now be removed along with (2) spacers #24.
12. Remove second snap ring #67 and intermediate sun gear #17 and spacer #28.
13. Planetary carrier assembly #4 may now be removed.



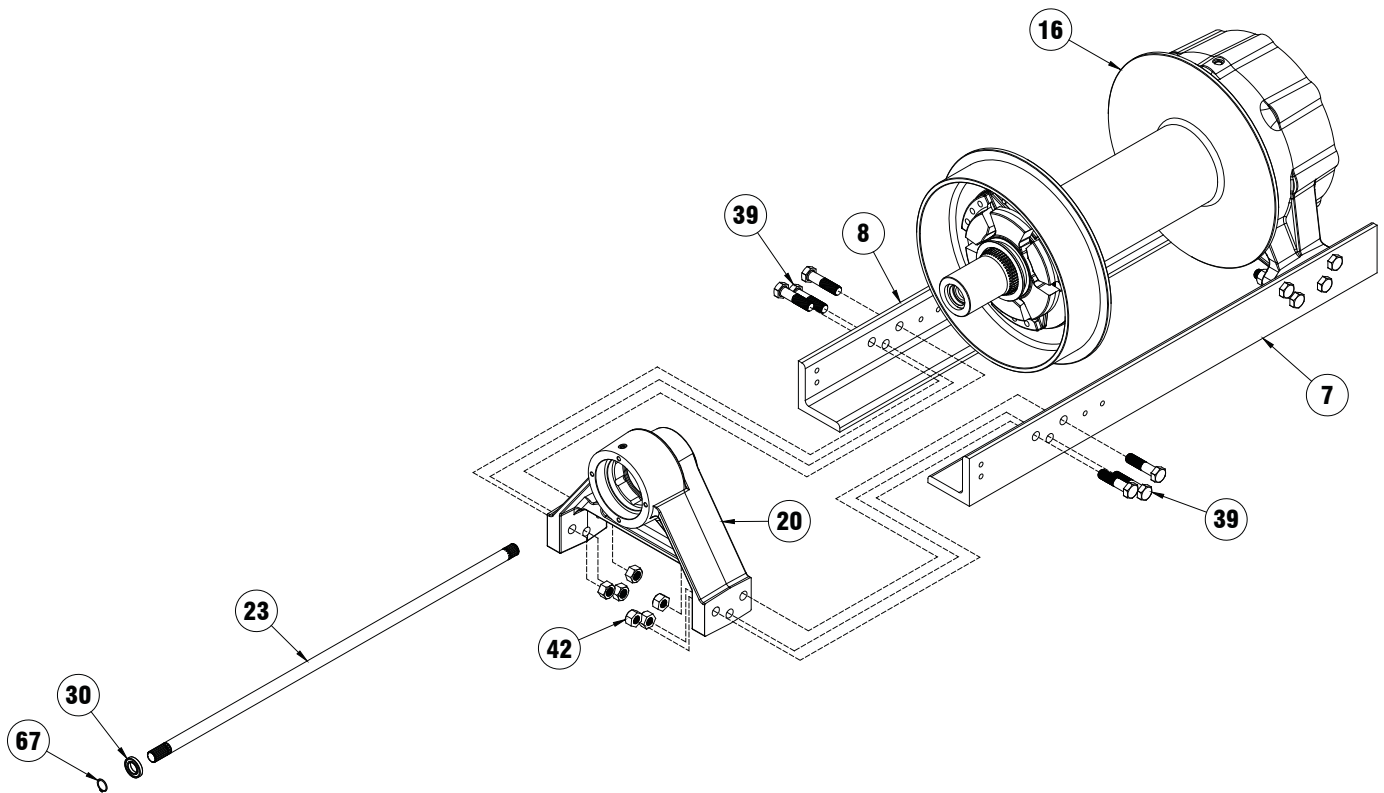
14. Using a nylon strap, support ring gear #22 from a hoist or boom, this ring gear is heavy. Remove (8) bolts #37 leaving the top most bolt for last. Remove the final bolt while supporting ring gear. Set ring gear aside. Remove the o-ring #61.
15. Remove spacer #28 and the output sun gear #19.



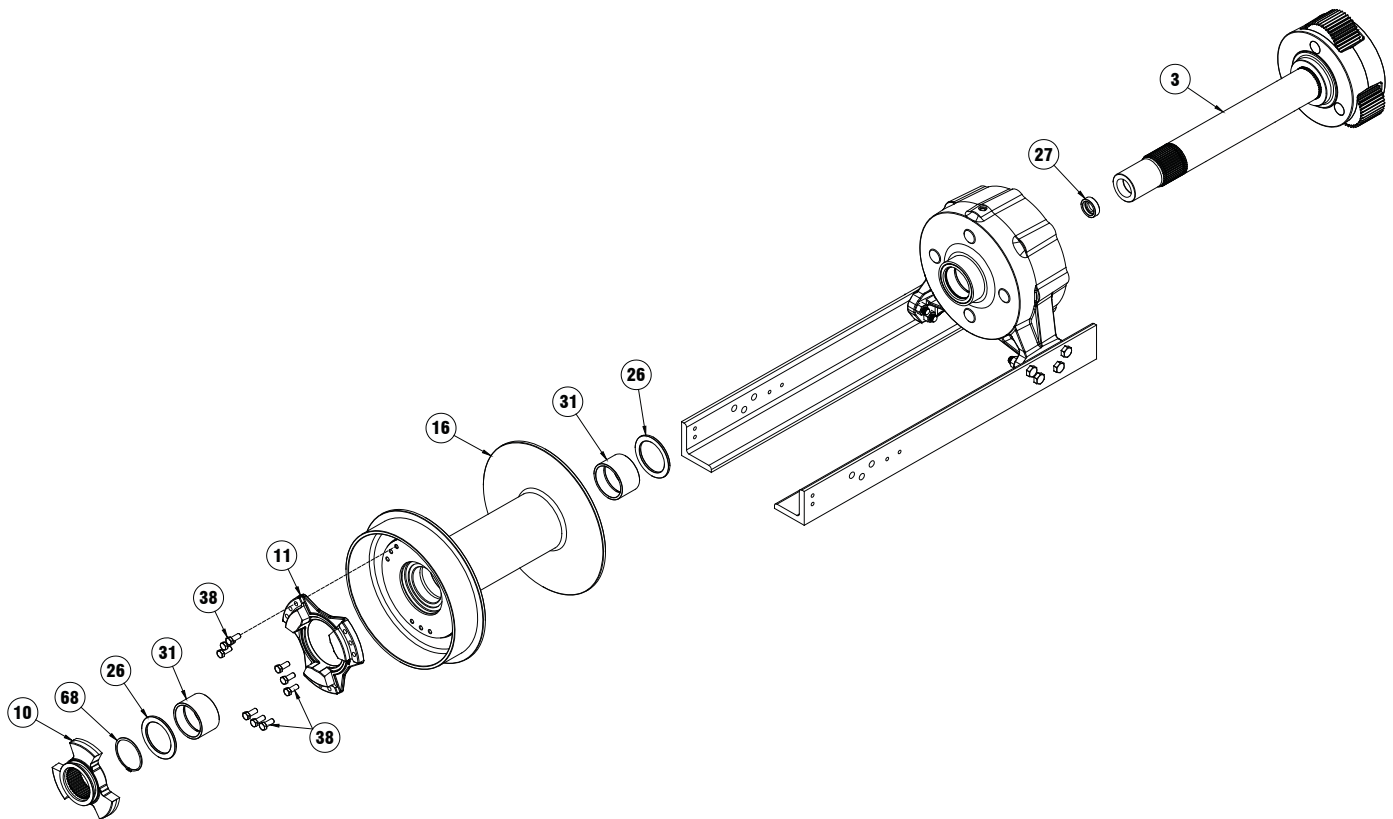
16. Remove the clutch cylinder #407 by removing the (2) cotter keys #404 and (2) pins #406 from either end of the air cylinder #407.
17. The clutch cylinder support bracket #9 can be removed by removing the four bolts #35 and nuts #41 attaching it to the mounting angles.
18. Remove the clutch yoke #29 by removing center pivot bolt #34 and nut #41.



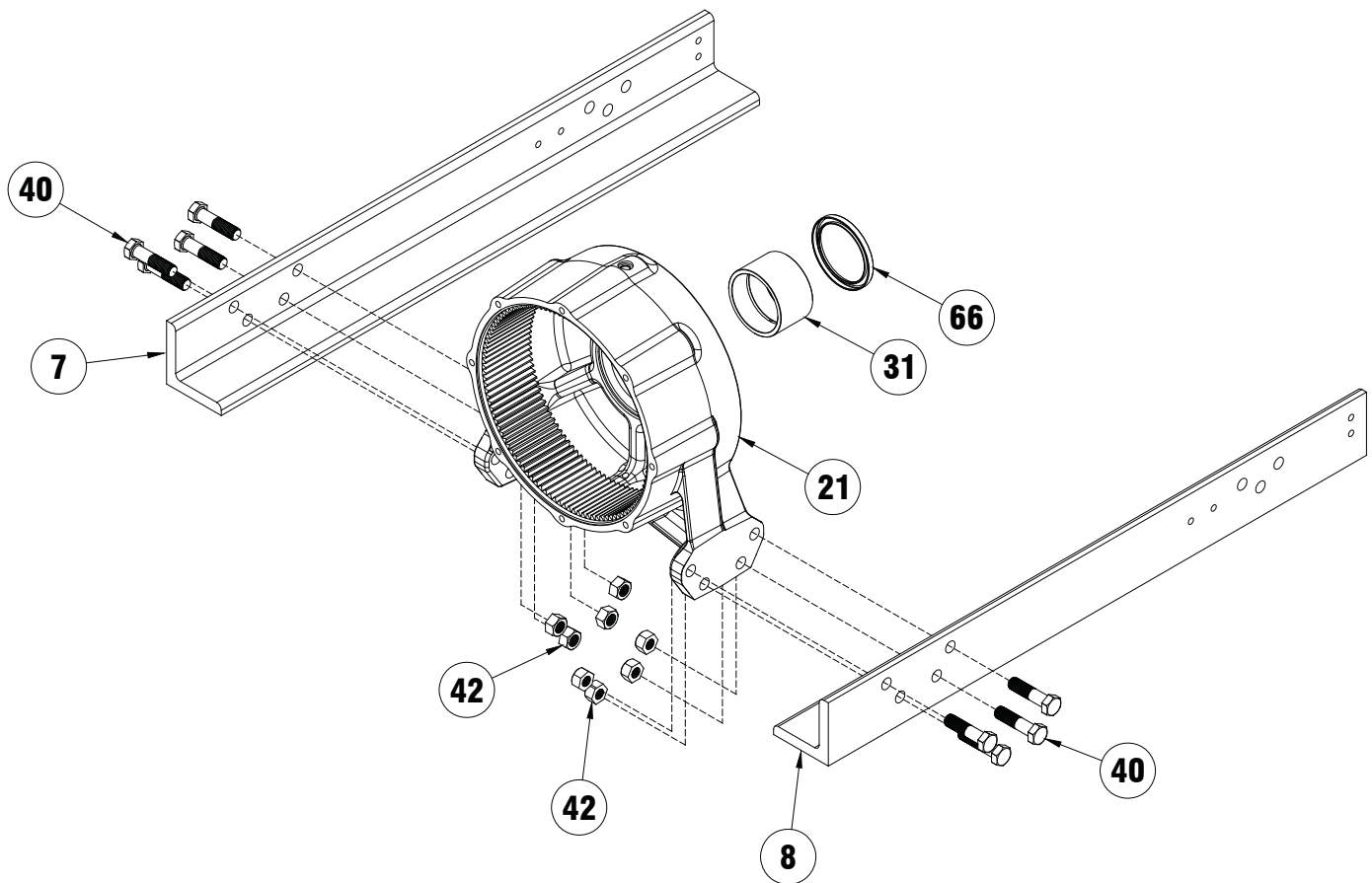
19. By removing snap ring #67 and ball bearing #30, the input shaft #23 may be removed.
20. To remove the motor end bearing #20, support drum #16 with a nylon strap or chain and hoist. Lift on the drum to tension the strap. Remove (6) bolts #39 and (6) nuts #42 attaching the end bearing to the mounting angles #7 and #8. The motor end bearing #20 will be supported on the output shaft end and may be slid off using a nylon strap and hoist to lift it.



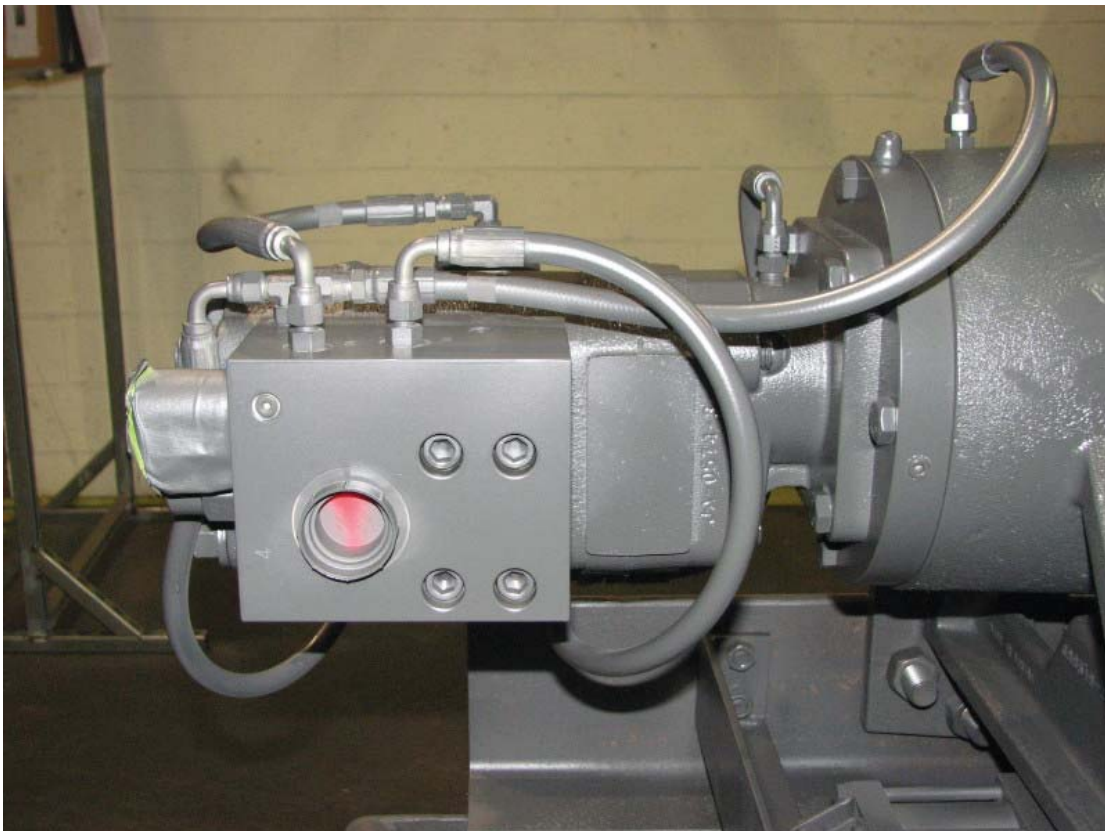
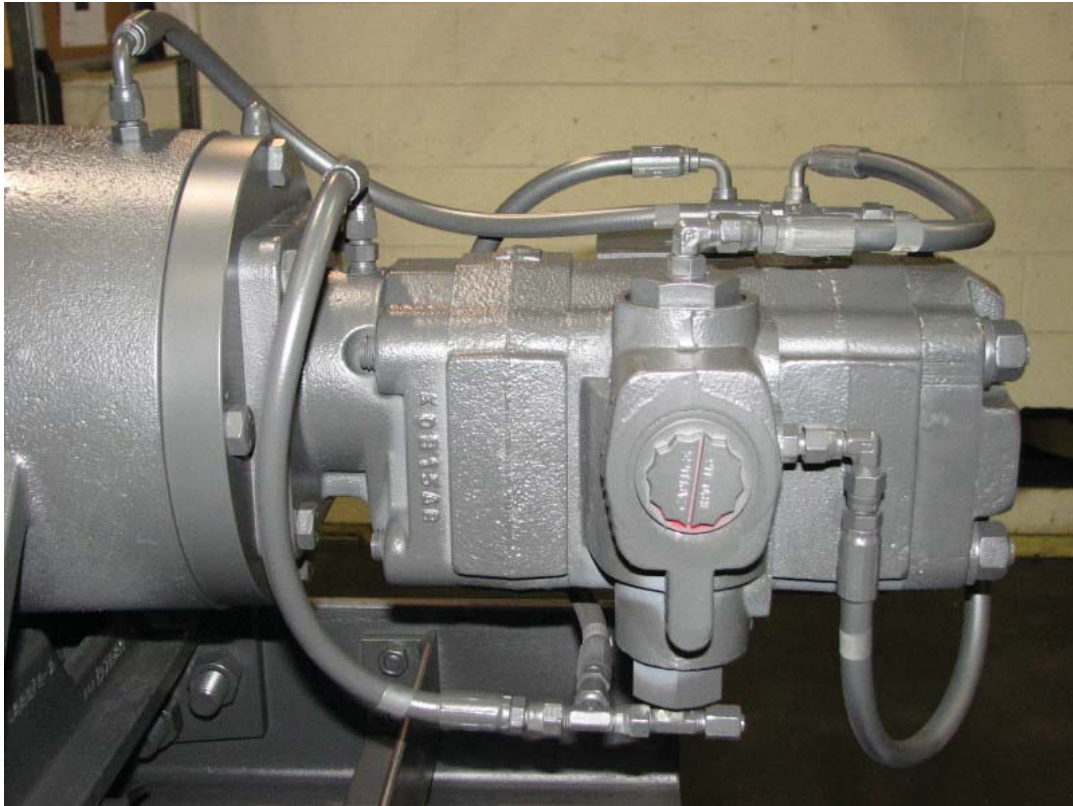
21. While continuing to support the drum #16, remove the clutch #10, snap ring #68 and spacer #26.
22. The output carrier assembly #23 may be slid from the drum assembly.
23. If required, spacer #27 can be removed from output carrier assembly.
24. The drum #14 is now supported only by the nylon strap and maybe removed as needed.
25. Remove drum driver #11 by removing (9) bolts #38.
26. The (2) bushings #31 may be pressed from the drum if replacement is necessary.



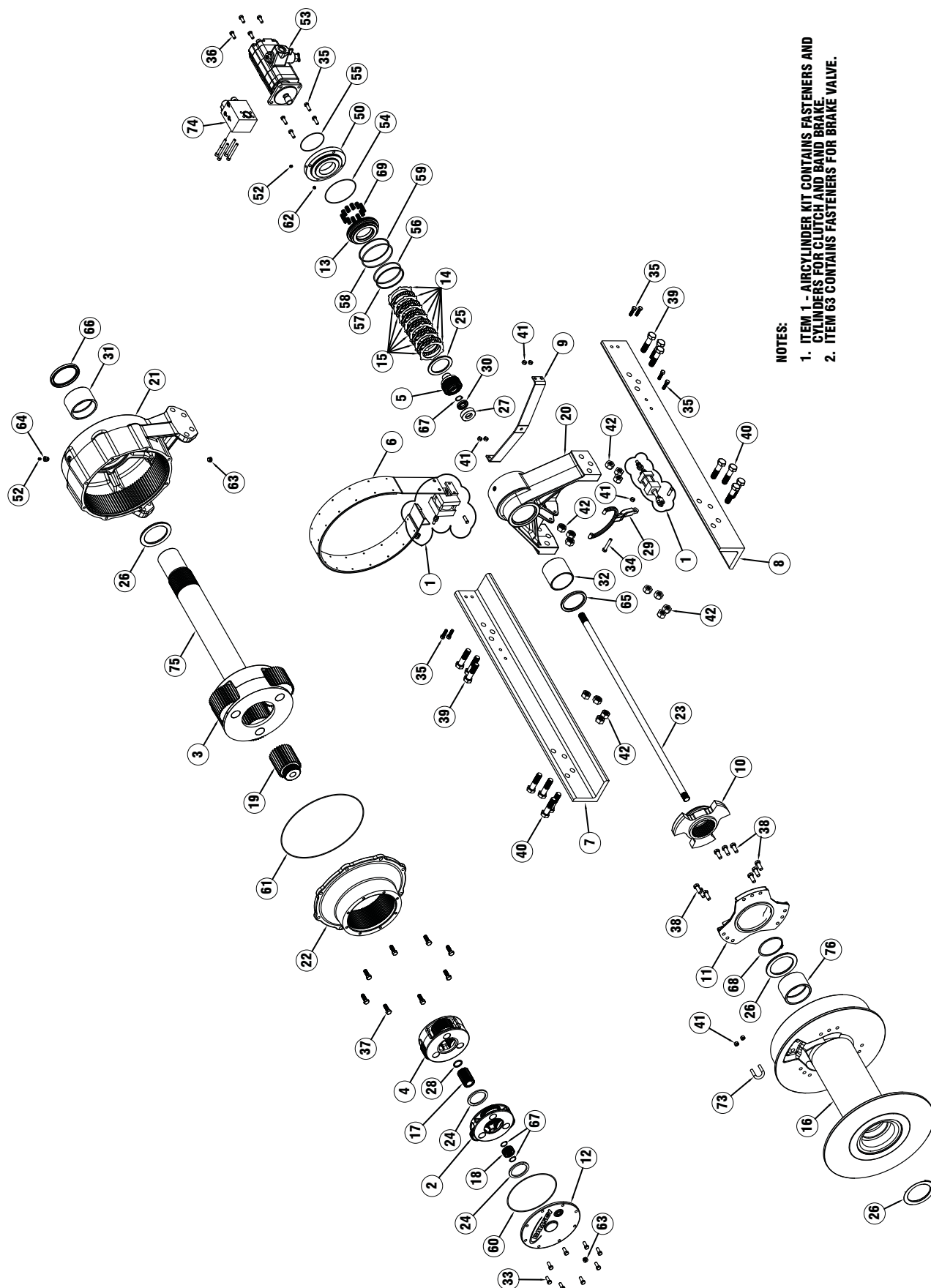
27. To remove gear end bearing #21, from mounting angles #7 and #8, first remove (4) bolts #40 and (4) nuts #42 from each angle. Shaft oil seal #66 and end bearing bushing # 31 can be re moved and replaced at this time, if necessary.



HOSE HOOKUP



EXPLODED VIEW 105K

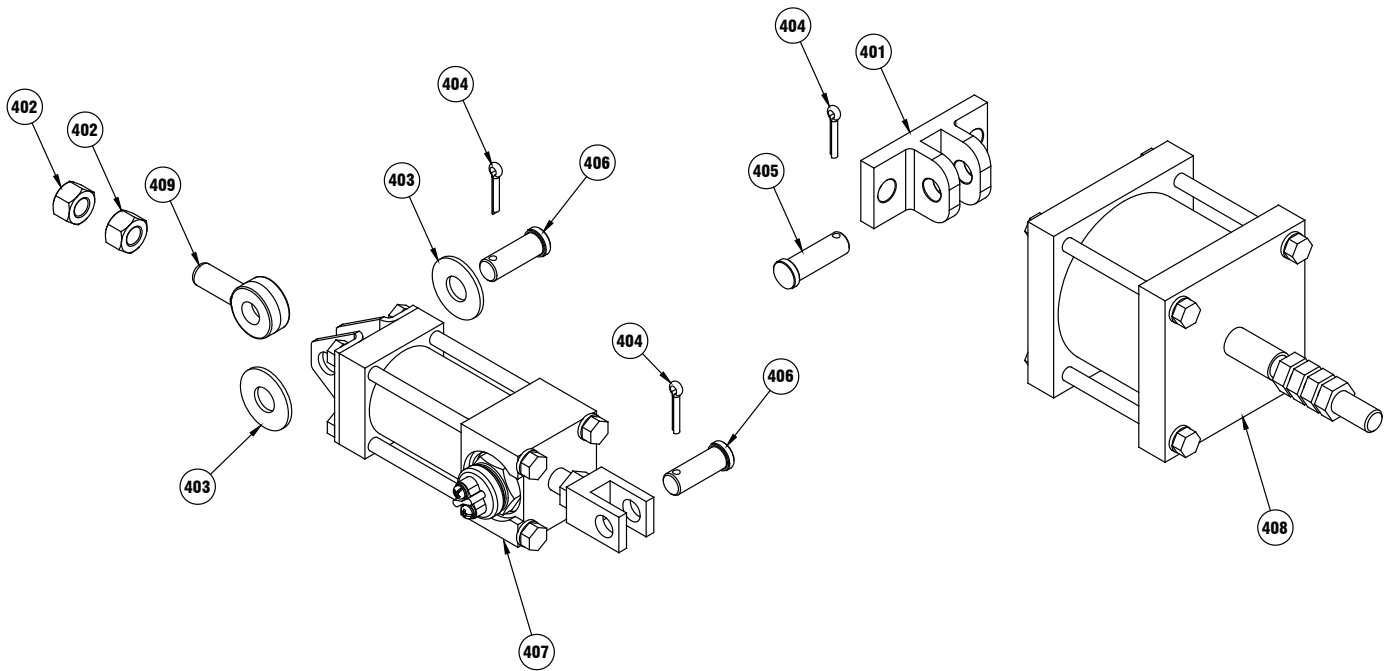


NOTES:
 1. ITEM 1 - AIRCYLINDER KIT CONTAINS FASTENERS AND CYLINDERS FOR CLUTCH AND BAND BRAKE.
 2. ITEM 63 CONTAINS FASTENERS FOR BRAKE VALVE.

PARTS LIST

ITEM	QTY	PART NO	DESCRIPTION	ITEM	QTY	PART NO	DESCRIPTION
1	1	256131	AIR CYLINDER KIT	39	6	414814	BOLT- 1-8NC X 4.5 LG, HXHD, GR8
2	1	296672	INPUT CARRIER ASSEMBLY	40	8	414815	BOLT- 1-8NC X 4 LG, HXHD, GR8
3	1	251316	OUTPUT CARRIER ASSEMBLY	41	7	418069	NUT-1/2-13NC HEX REG
4	1	296694	INTERMEDIATE CARRIER ASSEMBLY	42	14	418115	NUT-1-8NC HEX REG
5	1	296952	SPRAG BRAKE ASSEMBLY	43			NOT USED
6	1	299752	BAND BRAKE	44	1	432018	FITTING JIC O-RING EL
7	1	303160	FRAME RAIL-LH	45	4	432023	FITTING JIC O-RING NIPPLE
8	1	303161	FRAME RAIL-RH	46	1	432048	FITTING JIC SWIVEL TEE
9	1	312576	SUPPORT BRACKET, AIR CYLINDER	47	2	432049	FITTING JIC BRANCH TEE
10	1	324513	CLUTCH	48	1	432053	FITTING JIC O-RING NIPPLE
11	1	324515	DRUM DRIVER	49	1	432054	FITTING JIC SWIVEL EL
12	1	328167	COVER-GEAR END	50	1	438043	BRAKE COVER
13	1	330016	PISTON-BRAKE	51			NOT USED
14	7	330017	STATOR PLATE-BRAKE	52	2	456008	RELIEF FITTING
15	6	330018	FRICTION PLATE-BRAKE	53	1	458214	MOTOR
16	1	332254	DRUM	54	1	462063	O-RING 2-165
17	1	334199	GEAR-INTERMEDIATE SUN	55	1	462081	O-RING 2-159
18	1	334200	GEAR-INPUT SUN	56	1	462082	O-RING 2-358
19	1	334232	GEAR-OUTPUT SUN	57	1	462083	BACKUP RING 8-357
20	1	338404	BEARING SUPPORT, MOTOR END	58	1	462084	O-RING 2-362
21	1	338405	BEARING SUPPORT-GEAR END	59	1	462085	BACKUP RING 8-362
22	1	338407	RING GEAR	60	1	462092	O-Ring 2-275
23	1	357537	SHAFT-INPUT	61	1	462097	ORING 2 -284
24	2	362301	SPACER	62	1	468016	PIPE PLUG
25	1	362305	SPACER-BRAKE	63	2	468041	PLUG
26	3	362319	SPACER-OUPUT SHAFT	64	1	468042	REDUCER
27	1	362322	SPACER-BEARING	65	1	486099	OIL SEAL
28	1	362325	SPACER-INTERMEDIATE SUN GEAR	66	1	486100	OIL SEAL
29	1	370062	YOKE-CLUTCH	67	3	490006	RETAINING RING 5100-125
30	1	402132	BEARING BALL	68	1	490069	RETAINING RING 5100-500
31	1	412143	BUSHING-DRUM	69	12	494129	BRAKE SPRING
32	1	412144	BUSHING-MOTOR END	70	1	509137	HOSE
33	8	414521	CAPSCREW-1/2-13NCX1LG HXHD	71	2	509140	HOSE
34	1	414545	CAPSCREW-1/2-13NCX3.5LG,HXHD,Z/P,GR.5	72	3	509141	HOSE
35	10	414556	BOLT-1/2-13NCX1.75,HXD,GR5	73	1	514025	U-BOLT
36	4	414561	CAPSCREW-1/2-13NCX1.25 HXHD GR.5	74	1	516048	BRAKE VALVE
37	8	414658	BOLT-5/8-11NCX1.5LG,HXHD,Z/P,GR.5	75	1	357538	SHAFT-OUTPUT
38	9	414741	CAPSCREW- 3/4-10NC X 2 LG, SOCKET HEAD, ZINC	76	1	412150	BUSHING

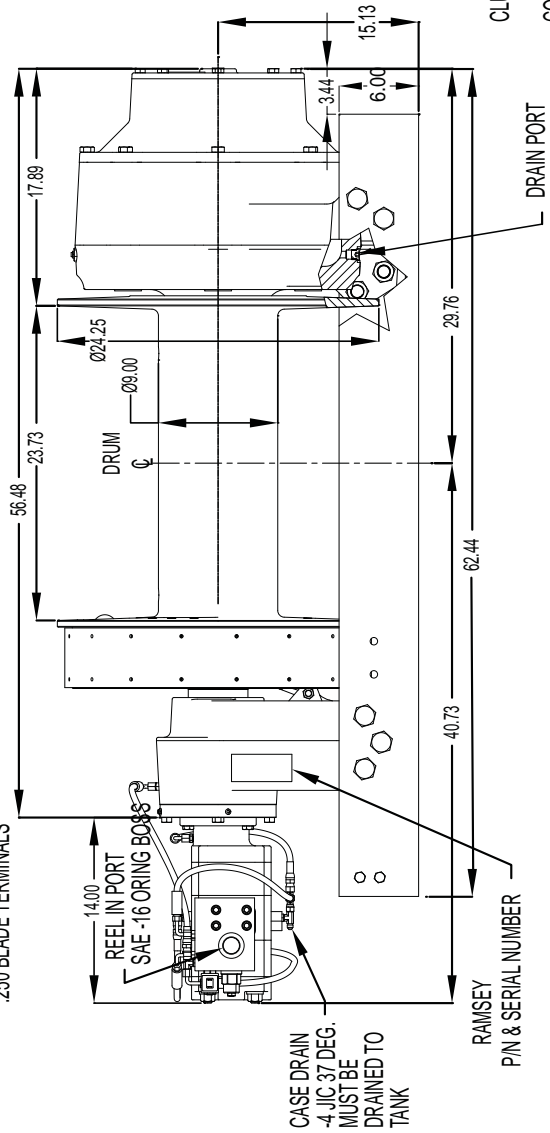
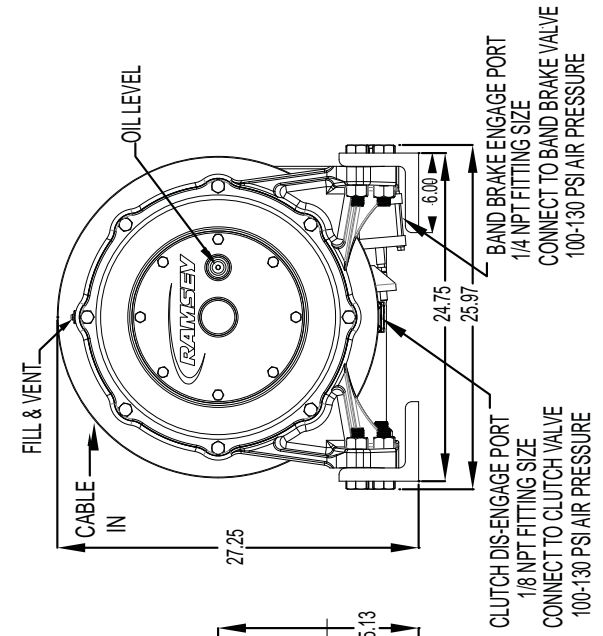
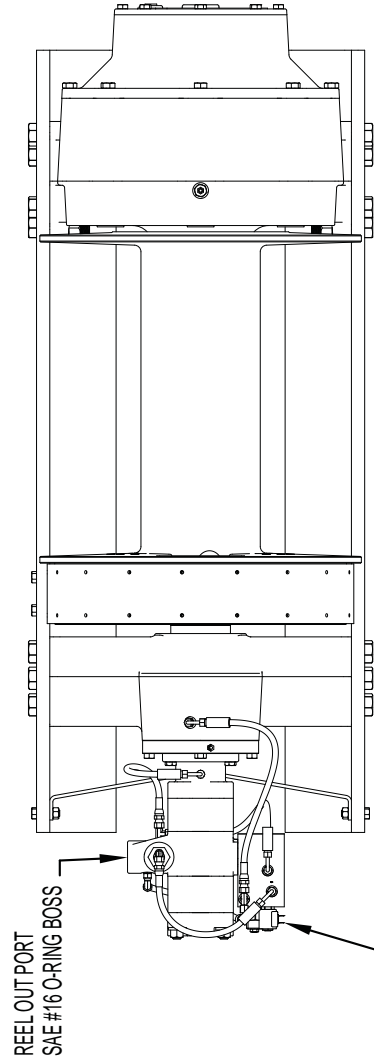
AIR CYLINDER KIT #256131 PARTS LIST



ITEM	QTY	PART NO	DESCRIPTION
401	1	408422	MOUNTING BRACKET
402	2	418067	NUT-1/2-20NF HEX JAM
403	2	418223	WASHER-1/2 USS FLAT
404	3	424005	COTTER PIN- 1/8 DIA X 1 LG
405	1	424027	CLEVIS PIN-1/2 SHAFT DIA X 1 1/2 LG
406	2	424205	CLEVIS PIN-1/2 SHAFT DIA X 1 23/64 LG
407	1	433031	AIR CYLINDER
408	1	433032	AIR CYLINDER
409	1	448108	EYE BOLT

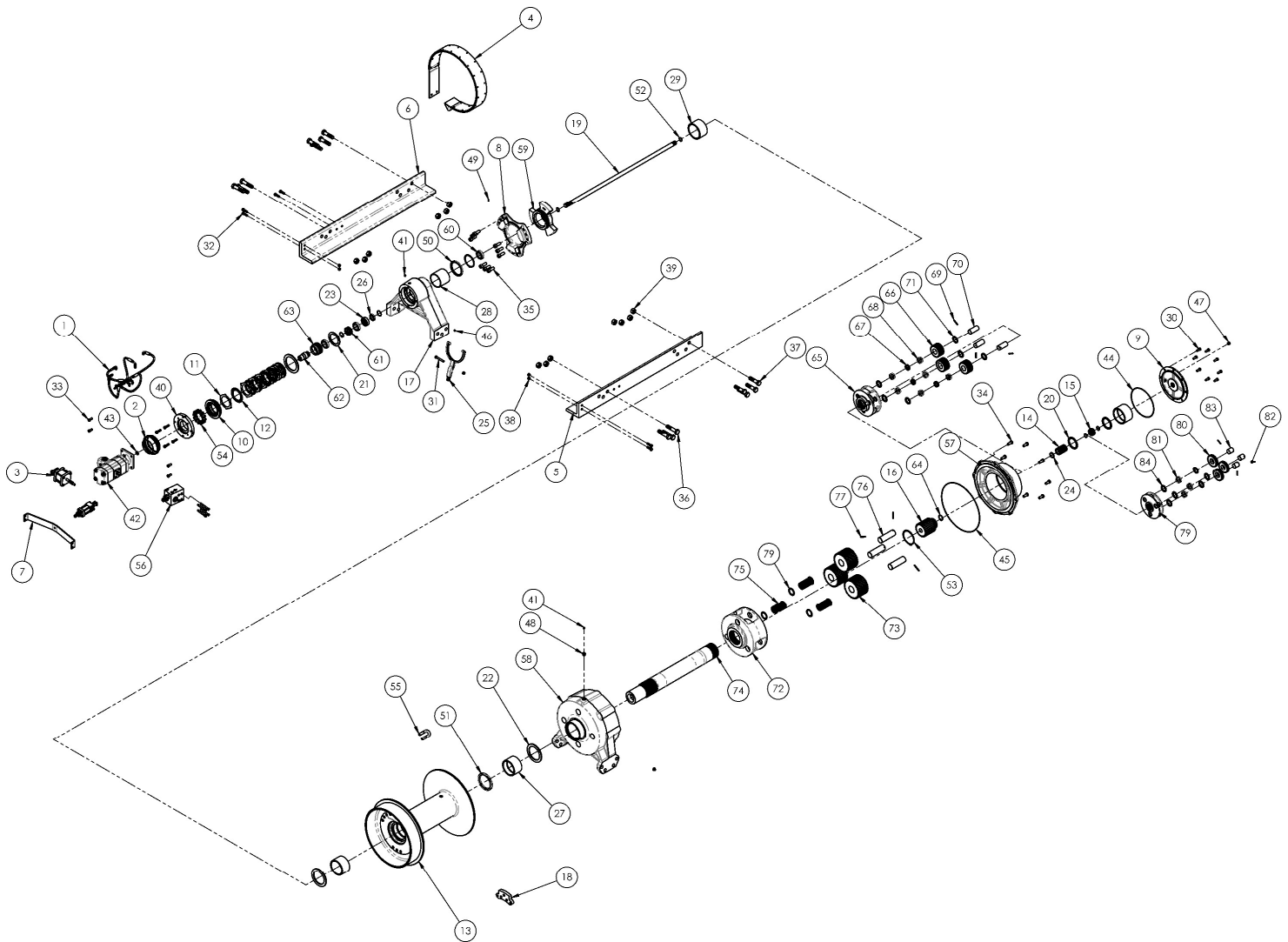
DIMENSIONAL DRAWING WC 105K

Bolt Size (inches)	Thds Per Inch	Bolt Torque (ft-lb)	
		SAE Grade 5	SAE Grade 8
7/16	14	54	78
1/2	13	78	119
5/8	11	154	230
3/4	10	257	380
7/8	9	382	600
1	8	587	700



KITS AND MAINTENANCE PARTS

127254



KITS AND MAINTENANCE PARTS

127254

				KITS							DESCRIPTION	PART NUMBER	QTY.	Item#
				207034	207035	207036	207037	222087	246083	246085				
1	1	251284									KIT-HOSE-BRAKE VALVE			248073
2	1	251285									O-RING KIT			
3	1	256131					X	X			AIR CYLINDER KIT			
4	1	299752					X				BRAKE BAND			
5	1	303160									FRAME RAIL-LH			
6	1	303161									FRAME RAIL-RH			
7	1	312576									BRACKET-SUPPORT			
8	1	324515									CLUTCH			
9	1	328167									COVER-GEAR			
10	1	330016				X					PISTON -BRAKE			
11	7	330017		X							STATOR PLATE-BRAKE			
12	6	330018		X							FRICTION PLATE-BRAKE			
13	1	332254									DRUM			
14	1	334199									GEAR-SUN-INTERMEDIATE			
15	1	334200									GEAR-SUN-INPUT			
16	1	334232									GEAR-SUN, OUTPUT			
17	1	338404									BEARING SUPPORT			
18	1	350753									PLATE - CABLE ANCHOR			
19	1	357537									SHAFT, INPUT			
20	2	362301									SPACER-INPUT PLANETARY			
21	1	362305								X	SPACER-BRAKE			X
22	3	362319									SPACER-OUTPUT SHAFT			X
23	1	362322									SPACER-BEARING			X
24	1	362325									SPACER-INTERMEDIATE SUN GEAR			X
25	1	370062					X	X			CLUTCH-YOKE			
26	1	402132									BEARING BALL- 1-1/4X2-1/4			X
27	1	412143									BUSHING-DRUM			X
28	1	412144									BUSHING-MOTOR END			X
29	2	412150									BUSHING-DRUM			X
30	8	414521									CAPSCREW-1/2-13NCX1LG HXHD			
31	1	414545						X			CAPSCREW-1/2-13NCX3 1/2, HXHD, G5			
32	10	414556									BOLT-1/2-13NCX1.75, HXD, GR5			
33	4	414561									CAPSCREW-1/2-13NCX1 1/4 HXHD GR.5			
34	8	414658									BOLT-5/8-11NCX1 1/2LG, HXHDGR.5			
35	9	414741									CAPSCREW- 3/4-10NC X 2 LG, SOCKET HEAD			

KITS AND MAINTENANCE PARTS

127254

			KITS							DESCRIPTION	PART NUMBER	QTY.	Item#
			207034	207035	207036	207037	222087	246083	246085	248073			
36	6	414814									BOLT- 1-8NC X 4.5 LG, HXHD, GR8		
37	8	414815									BOLT- 1-8NC X 4 LG, HXHD, GR8		
38	5	418069					X				NUT-1/2-13NC HEX REG		
39	14	418115									NUT-1-8NC HEX REG		
40	1	438043			X						BRAKE COVER-WILDCAT		
41	2	456008									RELIEF FIT-1/8-27PFT		
42	1	458214									MOTOR-HYD, 9.64 CU. IN.		
43	2	462056						X			O-RING		
44	1	462092						X			O-Ring		
45	1	462097						X			ORING- 18.00 ID X 18.25 OD X .125 THICK, -284		
46	1	468016									PIPE PLUG-1/8-27NPTF, HEX SOC. HD		
47	2	468041									PLUG-3/4-16 (-8 SAE) WITH O-RING		
48	1	468042									REDUCER-3/4-16 O-RING X 1/8NPTF		
49	2	470154									TAPER PIN		
50	1	486099						X			SEAL-OIL		
51	1	486100							X		SEAL-OIL		
52	3	490006									RING-RETAINER, 1 1/4		
53	2	490069									RING-RETAINER, 5.00 OD SHAFT		
54	12	494129	X								SPRING-BRAKE- 385LB IN/IN		
55	1	514023									CLIP-WIRE ROPE, 1"		
56	1	516048									COUNTER BALANCE BLOCK WC		
57	1	338407									RING GEAR- INPUT/INTERMEDIATE		
58	1	338405									BEARING SUPPORT		
59	1	324513				X	X				CLUTCH		
60	2	402131		X						X	BEARING-BALL-6009		X
61	1	402134		X							CLUTCH SPRAG		
62	1	431026		X							HUB-BRAKE-SHAFT		
63	1	431028		X							HUB-BRAKE-BRAKE		
64	2	490041		X							RING-RETAINER		
65	1	317028									CARRIER		
66	3	334204									GEAR-PLANET-INTERMEDIATE		
67	3	362307									SPACER-BEARING		X
68	204	402136									BEARING NEEDLE - 4X21.8		X
69	3	470075									PIN-1/4X 2		
70	3	470113									SHAFT-PLANETARY PIN		

KITS AND MAINTENANCE PARTS

127254

				KITS							
Item#	QTY.	PART NUMBER	DESCRIPTION	207034	207035	207036	207037	222087	246083	246085	248073
71	6	518067	THRUST WASHER - 1.577 X 2.341 X .118								X
72	1	317027	CARRIER-OUTPUT								
73	3	334229	GEAR-PLANET, OUTPUT								
74	1	357538	SHAFT-OUTPUT								
75	9	402144	BEARING-NEEDLE, 2.375 OD X 2.000 ID X 1.500 LG								X
76	3	470131	SHAFT-PLANET PIN, OUTPUT								
77	3	470143	PIN-SLOTTED SPRING, .25 X 2.5 LONG								
78	6	518076	WASHER-THRUST, 2.70 OD X 2.000 ID X .060 THICK								X
79	1	317018	CARRIER-INPUT								
80	3	334206	GEAR-PLANET-INPUT								
81	102	402135	BEARING NEEDLE - 4X19.8								
82	3	470105	PIN-SPRING, 3/16 X 1.625 LG								
83	3	470111	SHAFT-PLANETARY PIN-INPUT								
84	6	518067	THRUST WASHER - 1.577 X 2.341 X .118								



Limited Warranty

RAMSEY WINCH warrants each new RAMSEY Wildcat Winch to be free from defects in material and workmanship for a period of two (2) years from the date of purchase. Our new two year limited warranty is standard equipment on all Wildcat Winches manufactured after July 4th, 2014, and is also available for all Wildcat series winches currently in inventory at authorized distributors if the model and serial numbers are submitted to Ramsey Winch by August 30, 2014. End users who have purchased a winch since June 1, 2014, are also eligible for the two year warranty with purchase date, serial number, and model number submitted to an approved Wildcat Distributor by August 30, 2014.

Warranty General. The obligation under this warranty, statutory or otherwise, is limited to the replacement or repair at the Manufacturer's factory, or at a point designated by the Manufacturer, of such part that shall appear to the Manufacturer, upon inspection of such part, to have been defective in material or workmanship. This warranty does not obligate RAMSEY WINCH to bear the cost of labor or transportation charges in connection with the replacement or repair of defective parts, nor shall it apply to a product upon which repairs or alterations have been made unless authorized by the Manufacturer, or for equipment misused, neglected or which has not been installed correctly.

To the fullest extent permitted by applicable law, the following are hereby excluded and disclaimed: 1. All warranties of fitness for a particular purpose; 2. All warranties of merchantability; 3. All claims for consequential or incidental damages. There are no warranties that extend beyond the description that appears on the face hereof. Some states do not allow the above exclusions or disclaimers in consumer transactions and as such this disclaimer/exclusion may not apply to your particular case. To the extent such warranties of fitness for a particular purpose or merchantability are deemed to apply to this product, they exist for only so long as the express limited warranty elsewhere set forth is in existence.

RAMSEY WINCH whose policy is one of continuous improvement, reserves the right to improve its products through changes in design or materials as it may deem desirable without being obligated to incorporate such changes in products of prior manufacture.

If field service at the request of the Buyer is rendered and the fault is found not to be with RAMSEY WINCH's product, the Buyer shall pay the time and expense of the field representative. Bills for service, labor or other expenses that have been incurred by the Buyer without approval or authorization by RAMSEY WINCH will not be accepted.

This Warranty gives you specific legal rights and you may also have other legal rights, which vary from state to state.



Ramsey Winch Company

Post Office Box 581510

Tulsa, Oklahoma 74158-1510

Telephone: (#918) 438-2760 FAX: (#918) 438-6688