

RAMSEY HYDRAULIC PLANETARY WINCH MODEL POWERMASTER 20K

PLEASE READ THIS MANUAL CAREFULLY

This manual contains useful ideas in obtaining the most efficient operation from your Ramsey Winch, and safety procedures one needs to know before operating a Ramsey Winch. Do not operate this winch until you have carefully read and understand the "WARNINGS" and "OPERATION" sections of this manual.

WARRANTY INFORMATION

Ramsey Winches are designed and built to exacting specifications. Great care and skill go into every winch we make. If the need should arise, warranty procedure is outlined on the back of your self-addressed postage paid warranty card. Please read and fill out the enclosed warranty card and send it to Ramsey Winch Company. If you have any problems with your winch, please follow instructions for prompt service on all warranty claims. Refer to back page for limited warranty.

SPECIFICATIONS*

Rated Line Pull (lbs.)						20,000
(Kg.)						9070
Gear Reduction						21:1
Weight (without cable) 20K Bumper Winch (Less Bumper).....						337 lbs
LAYER OF CABLE		1	2	3	4	5
*Rated line pull per layer	lbs.	20,000	17,300	15,200	13,600	12,300
	Kg.	9,070	7,840	6,890	6,160	5,570
* Cable Capacity per Layer						
20K Winch	ft.	30	70	115	165	220
	m	9	21	35	20	67
* Line Speed (at 30 GPM)	FPM	42	47	53	59	65
	MPM	12.1	14.3	16.1	17.9	19.8
* These specifications are based on recommended wire rope of 9/16" Extra Improved Plow Steel and a 14.9 cu. in. / Rev. motor.						

NOTE: The rated line pulls shown are for the winch only. Consult the wire rope manufacturer for wire rope ratings.

CAPSTAN RATING IS 3,000 LBS BASED ON 7" DRUM BARREL.

WARNINGS:

CLUTCH MUST BE FULLY ENGAGED BEFORE STARTING THE WINCHING OPERATION.

DO NOT START WINCH MOTOR BEFORE ENGAGING CLUTCH.

DO NOT DISENGAGE CLUTCH UNDER LOAD.

STAY OUT FROM UNDER AND AWAY FROM RAISED LOADS.

STAND CLEAR OF CABLE WHILE PULLING. DO NOT TRY TO GUIDE CABLE.

DO NOT EXCEED MAXIMUM LINE PULL RATINGS SHOWN IN TABLE.

DO NOT USE WINCH TO LIFT, SUPPORT, OR OTHERWISE TRANSPORT PEOPLE.

A MINIMUM OF 5 WRAPS OF CABLE AROUND THE DRUM BARREL IS NECESSARY TO HOLD THE LOAD.

CABLE ANCHOR IS NOT DESIGNED TO HOLD LOAD.

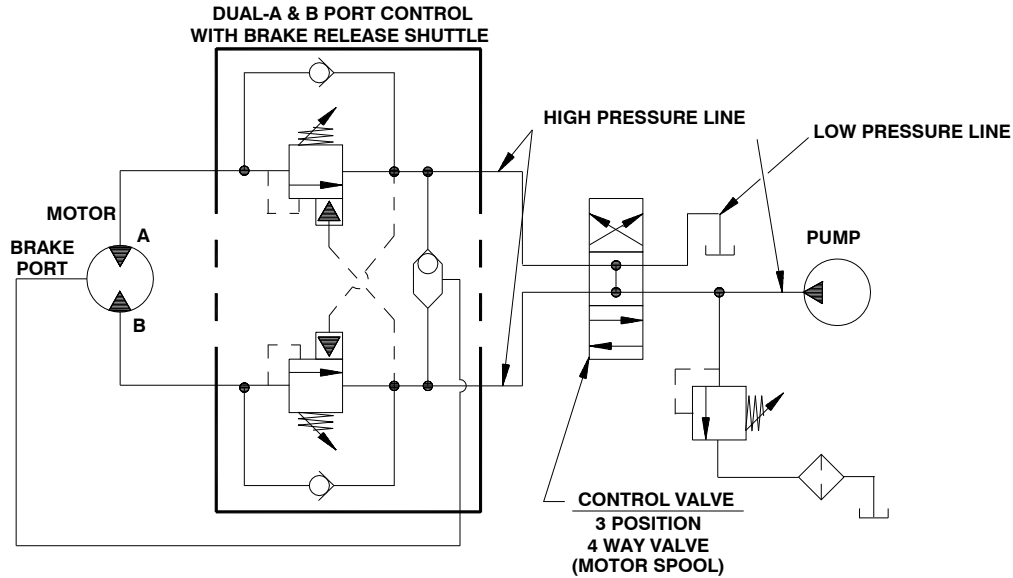
HYDRAULIC SYSTEM REQUIREMENTS

Refer to the performance charts, below, to properly match your hydraulic system to the Powermaster 20K winch performance. The charts consist of:

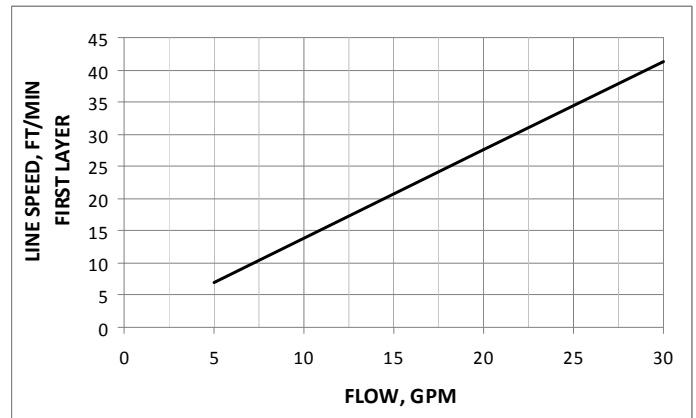
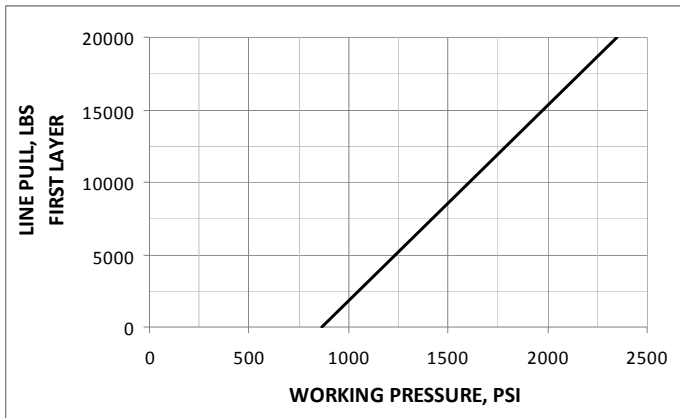
- (1) Line pull (lb.) first layer vs. working pressure (PSI) and (2) Line speed, first layer (FPM) vs. gallons per minute (GPM). Performance based on a motor displacement of 14.9 cubic inches with 30 GPM maximum flow rate. Motor has (2) 1.062-12 SAE straight thread o-ring ports.

Note: A motor spool (open center) directional control valve is required for brake operation.

TYPICAL LAYOUT



PERFORMANCE CHARTS



BASED ON 14.9 CU IN/REV MOTOR

