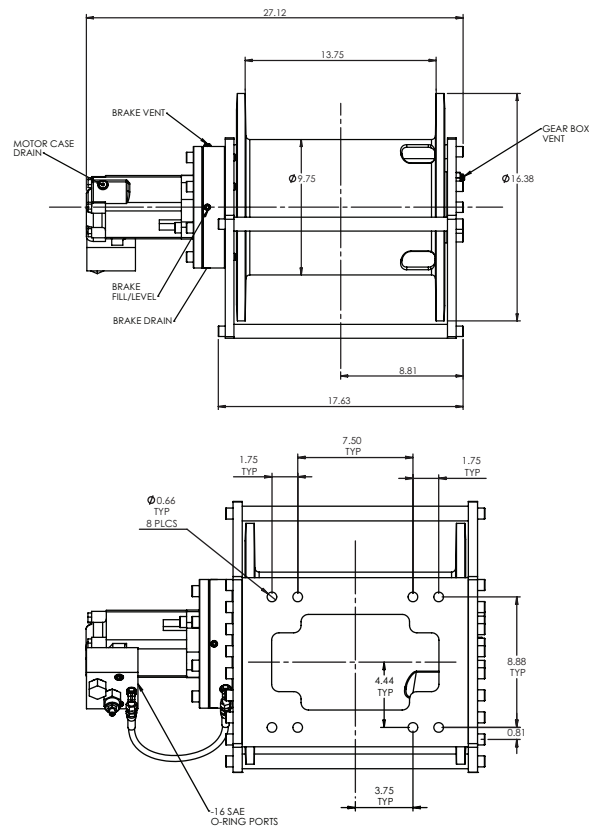
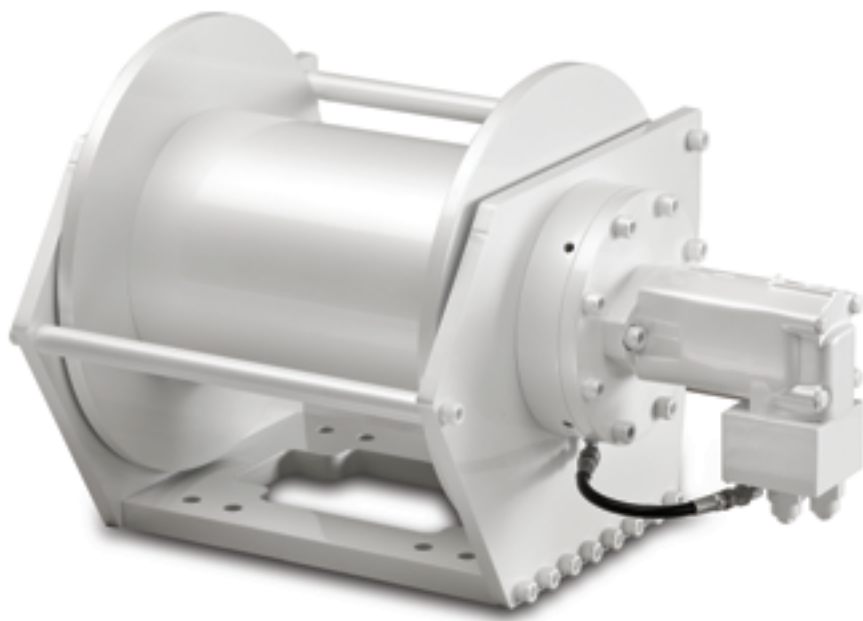


RCH 12K HOIST

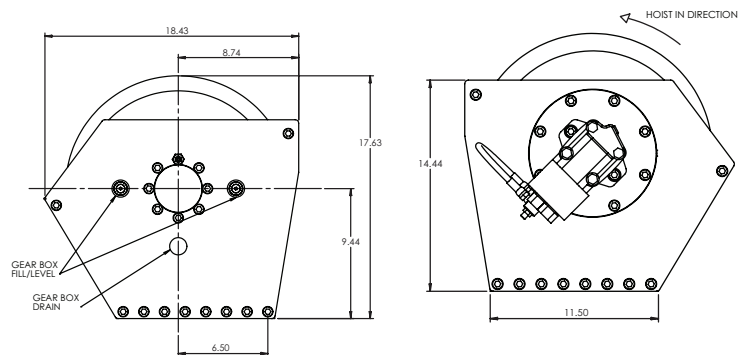


New RCH 12K Planetary Hoist offers a compact design with reliable power, lift after lift.

- 12,000 lbs. first layer
- Highly efficient planetary gear set with anti friction bearings
- Spring applied hydraulic released brake
- Choice of single or two speed motors
- Fabricated steel side plates for design flexibility
- Easily accessible oil fill and drain ports for faster maintenance
- Two wedge pockets for over or under wound applications
- Meets ANSI B30.5 standards



Performance and Specifications						
RATED LINE PULL (LB)		12,000 Lb				
WEIGHT (WITHOUT WIRE ROPE)		460 Lb				
WORKING PRESSURE		3000 PSI				
MAX FLOW		25 GPM				
CABLE DIA.		9/16				
LAYER OF CABLE		1	2	3	4	5
RATED LINE PULL	LBS	12,000	10,800	9,800	9,000	8,300
CABLE CAPACITY	FT	55	125	195	275	360
LINE SPEED (AT 25 GPM)	FPM	81	88	96	104	112
SPECIFICATIONS BASED ON 9/16 CABLE AND 9.6 CU IN. HYDRAULIC MOTOR, AT 2750 PSI AND 25 GPM FLOW.						



WARNING
Winches and capstans are not intended to be used for lifting or moving of persons.

CAUTION
The last 5 wraps of cable must be left on the drum to assist the cable clamp in holding the load.



From the Experts in Winching / 1600 N. Garnett Rd, Tulsa, OK 74116 / 1-800-777-2760 / info@ramsey.com