



# WC 85R

## Heavy Duty Planetary

**85,000 lb**  
Rated Line Pull



### Features and Benefits

- 2-Year Warranty
- Fast line speed
  - Up to 27 ft/min under full load
- Oil-impregnated bronze drum bushings
  - Eliminates external drum grease zerks for less field maintenance
- Heavy-duty clutch yoke
  - Designed for easy access field maintenance
- Heavy-duty shafts
  - For strength and durability
- Symmetrical design
  - For streamline mounting
- Heavy-duty clutch splined directly to shaft
  - For strength and reliability
- 2-Speed gear motor
- SAE J706

### WC 85R Specifications

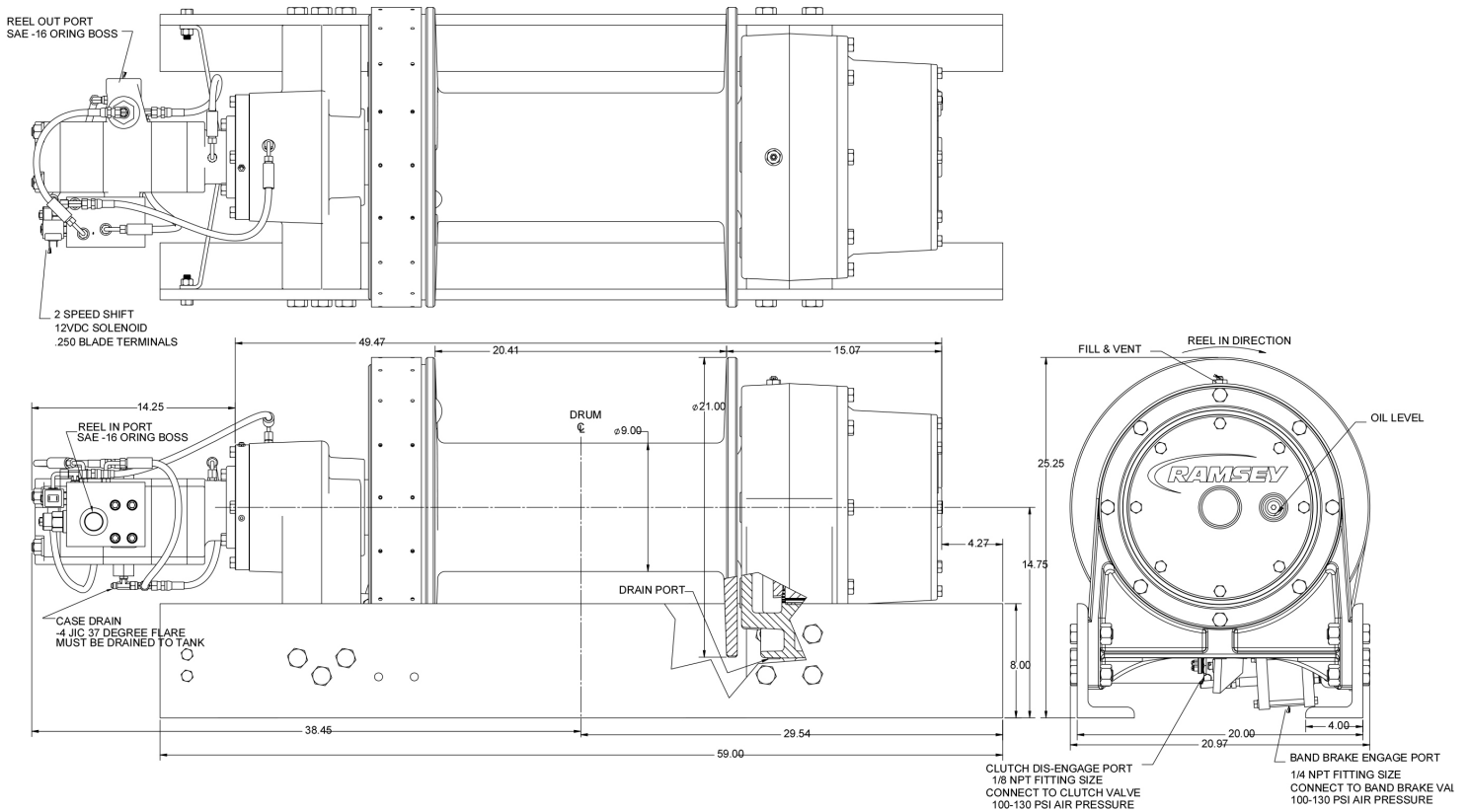
Rated Line Pull (Low Speed)	85,000 lb (38,550 kg)
Weight (without Cable)	1685 lb (764 kg)
Gear Reduction	130:1

WC 85R Standard Drum						
Layer of Cable		1	2	3	4	5
Rated Line Pull / Layer* (Low Speed)	lb	85,000	70,800	60,700	53,100	47,200
	kg	38,550	32,110	27,530	24,080	21,400
Rated Line Pull / Layer* (High Speed)	lb	37,000	30,800	26,400	23,100	20,500
	kg	16,780	13,970	11,970	10,470	9,290
Line Speed – Low (at 60 GPM)*	FPM	27	31	36	41	46
	(MPM)	8	9	11	12	14
Line Speed – High (at 60 GPM)*	FPM	58	68	78	89	99
	(MPM)	18	21	24	27	30
Cable Capacity* Standard Drum	ft	45	105	170	250	335
	m	13	32	51	76	102

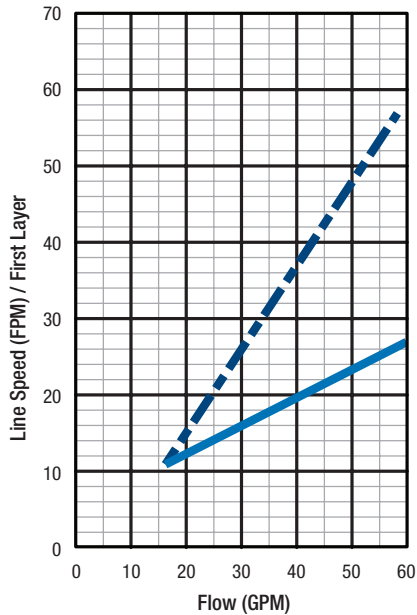
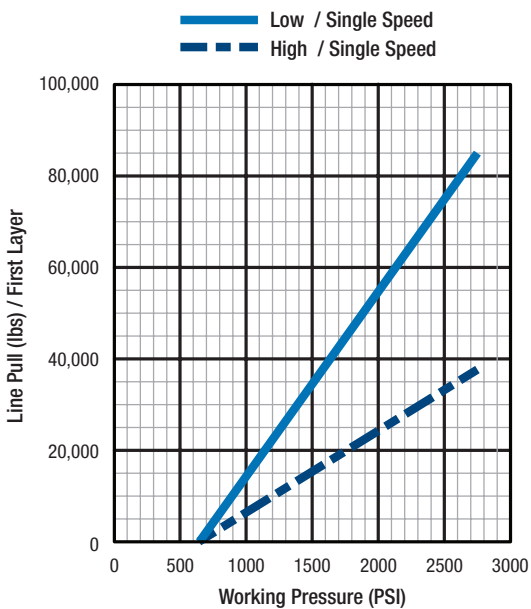
\*Specifications based on recommended wire rope of 1 inch dia. EIPS cable and 10.28 cu. in./rev. motor at 2,750 psi working pressure and 60 gpm flow.

– Directional control valve: 3-position, 4-way motor spool.

– Winch meets SAE J706.



## Performance with 10.28 in<sup>3</sup>/Rev Motor



Wildcat Winch Series® and Ramsey Winch® are brands of Ramsey Winch Company, a wholly owned subsidiary of Ramsey Industries, Inc. Ramsey Winch reserves the right to make changes to our products without notice.