

INSTALLATION INSTRUCTIONS FOR AIR ACTUATED CABLE TENSIONER KITS #256086& 256087

These Tensioner Kits are designed specifically for the Ramsey Winch Models RPH 20,000 and RPH 25,000 Series Winches. The Tensioners require an independent, adjustable regulated air supply of between 50 psi and 90 psi. If you do not provide an adjustable air supply you will not be able to adjust the effort of the free-spool. If your vehicle is not equipped with an independent, adjustable air pressure regulator (used only for the tensioner) or you are unable to adjust it to a setting in the range indicated, order pressure regulator kit #256092 from Ramsey.

INSTALLATION PROCEDURE

Disengage the winch clutch and free spool all the cable **except for the last wrap off the winch**. Lay cable out in a straight line behind the truck to prevent kinking. Mark mounting hole center's as shown in Fig. 1. Place cable tensioner assembly over marked hole positions (for underwound installations place assembly on top of angle). Observe location of tensioner bar and center it between the drum flanges. Adjust hole locations as necessary to maintain centered position. Drill two .625 diameter holes through the horizontal flange of the angle component of the winch frame as shown in FIG. 1.

OVER-WOUND installations -- Place the supplied mounting bolts through the mounting holes of the Tensioner bracket. Carefully position the bracket over the previously drilled holes in the flange of the angle component of the winch frame, allowing the bolts to fall through the holes. Loosely attach the washers and nuts.

UNDER-WOUND installations -- clamp the tensioner in position under the previously drilled holes, place the bolts through the bracket mounting holes and into the winch frame. Loosely attach the washers and nuts.

Center the tension bar between the drum flanges with a scale or tape measure and tighten the bolts securely (75 ft-lbs. of torque).

If you removed the cable entirely from the winch or this is a new installation: The cable tensioner is not intended to be energized on a bare drum. Before applying air to the cable tensioner, engage the clutch and run the winch in the reel in direction winding one full wrap of cable on the drum. This prevents damage to the cable tensioner.

Attach the regulated air supply to the "T" fitting on the tensioner (see FIG. 2). Hand tighten the nut. **Do NOT tighten more than 1/4 turn beyond hand tight.** Apply air to the tensioner. Engage the clutch and run the winch in the reel in direction winding about five wraps of cable onto the drum and stop. Using a hammer tap these five wraps tightly over against the cable anchor flange side of the cable drum. Finish winding all the cable onto the cable drum. As cable winds onto the drum, watch the tensioner. Tensioner must be free to move without obstruction to function properly. If tensioner touches any surrounding structure, correct the problem.

Adjust the free-spool effort of the cable tensioner. Disengage the winch clutch and free spool some cable off the drum. Adjust the air pressure to the cable tensioner to achieve the desired free spool effort that also prevents "bird nesting" of the cable.

CAUTION: DO NOT EXCEED 100 PSI AIR PRESSURE TO THE ACTUATORS.

OPERATION

Once you have adjusted the air pressure to the desired level, only minor adjustment may be required if your pressure regulator setting drifts.

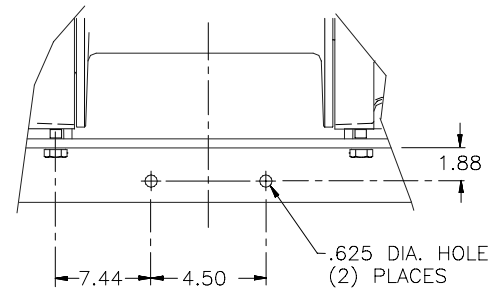


FIGURE 1

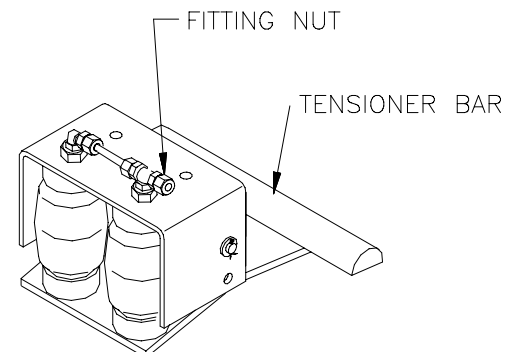


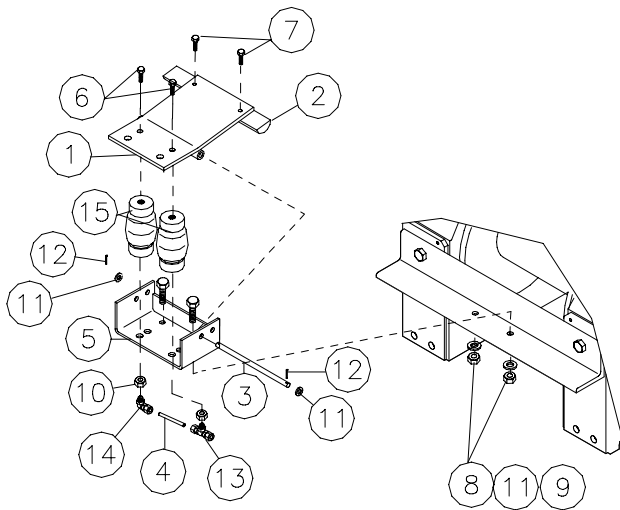
FIGURE 2

DO NOT TIGHTEN FITTING NUTS MORE THAN 1/4 TURN BEYOND HAND TIGHT

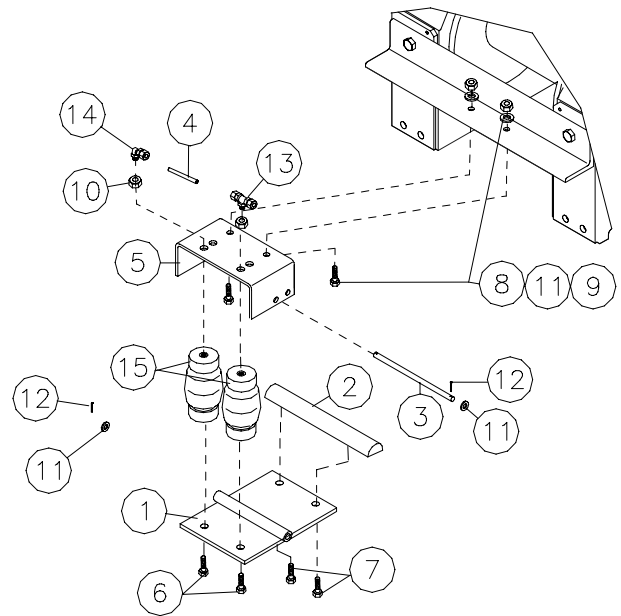


RAMSEY WINCH COMPANY
P.O. BOX 581510
TULSA, OKLAHOMA 74158

KI-912574-1097-C



KIT #256086 - OVERWOUND



KIT #256087 - UNDERWOUND

PARTS LIST FOR TENSIONER KITS #256086 & #256087

ITEM NO.	QTY.	PART NUMBER	DESCRIPTION
1	1	265020	TENSIONER ASSEMBLY (OVERWOUND)
	1	265022	TENSIONER ASSEMBLY (UNDERWOUND)
2	1	304169	TENSIONER BAR
3	1	346046	PIN
4	1	365038	TUBE
5	1	408227	BRACKET ASSEMBLY-AIR TENSIONER
6	2	414137	CAPSCREW 5/16-18NC X 3/4 LG. HX.HD. GR.5 PLTD.
7	2	414278	CAPSCREW 3/8-16NC X 3/4 LG. HX.HD. GR.5 PLTD.
8	2	414548	CAPSCREW 1/2-13NC X 1-1/2 LG. HX.HD. GR.5 PLTD.
9	2	418069	NUT 1/2-13NC HX.REG. PLTD.
10	2	418080	NUT 5/8-11NC HX.REG. PLTD.
11	4	418223	WASHER 1/2 USS FLAT PLTD.
12	2	424005	COTTER PIN
13	1	432032	FITTING-TEE
14	1	432033	FITTING-ELBOW
15	2	433023	AIR ACTUATOR